



# IRGM Polyclonal Antibody

<b>Catalog No</b>	BYab-07322
<b>Isotype</b>	IgG
<b>Reactivity</b>	Human;Rat;Mouse;
<b>Applications</b>	WB;ELISA
<b>Gene Name</b>	IRGM IFI1 IRGM1 LRG47
<b>Protein Name</b>	Immunity-related GTPase family M protein (EC 3.6.5.-) (Immunity-related GTPase family M protein 1) (Interferon-inducible protein 1) (LPS-stimulated RAW 264.7 macrophage protein 47 homolog) (LRG-47)
<b>Immunogen</b>	Synthesized peptide derived from human protein . at AA range: 101-150
<b>Specificity</b>	IRGM Polyclonal Antibody detects endogenous levels of protein.
<b>Formulation</b>	Liquid in PBS containing 50% glycerol, and 0.02% sodium azide.
<b>Source</b>	Polyclonal, Rabbit,IgG
<b>Purification</b>	The antibody was affinity-purified from rabbit antiserum by affinity-chromatography using epitope-specific immunogen.
<b>Dilution</b>	WB 1:500-2000 ELISA 1:5000-20000
<b>Concentration</b>	1 mg/ml
<b>Purity</b>	≥90%
<b>Storage Stability</b>	-20°C/1 year
<b>Synonyms</b>	
<b>Observed Band</b>	19kD
<b>Cell Pathway</b>	Golgi apparatus membrane . Cell membrane . Cytoplasmic vesicle, phagosome membrane . Cytoplasmic vesicle, autophagosome membrane . Cell projection, phagocytic cup . Behaves like an integral membrane protein. Recruited to the plasma membrane around forming phagocytic cups, it remains associated with maturing autophagosomes. Preferentially associated with cis- and medial-Golgi. .
<b>Tissue Specificity</b>	Widely expressed (at protein level). Expressed in several tissues including colon, small bowel and peripheral blood leukocytes.
<b>Function</b>	disease:Defects in IRGM are associated with susceptibility to Crohn disease (CD) [MIM:266600]. CD is a form of remitting inflammatory bowel disease (IBD). CD may involve any part of the gastrointestinal tract, but most frequently the terminal ileum and colon. Bowel inflammation is transmural and discontinuous. CD is commonly classified as an autoimmune disease. The causal variants do not affect the protein sequence but may lie in regulatory regions and alter its expression.,function:Putative GTPase which is required for clearance of acute

**Nanjing BYabscience technology Co.,Ltd**



protozoan and bacterial infections. Functions in innate immune response probably through regulation of autophagy. May regulate proinflammatory cytokine production and prevent endotoxemia upon infection. May also play a role in macrophages adhesion and motility.,induction:Not up-regulated by IFNG.,miscellaneous:Depletion of IRGM by siRNA favors mycobacte

## Background

immunity related GTPase M(IRGM) Homo sapiens This gene encodes a member of the p47 immunity-related GTPase family. The encoded protein may play a role in the innate immune response by regulating autophagy formation in response to intracellular pathogens. Polymorphisms that affect the normal expression of this gene are associated with a susceptibility to Crohn's disease and tuberculosis.[provided by RefSeq, Oct 2010],

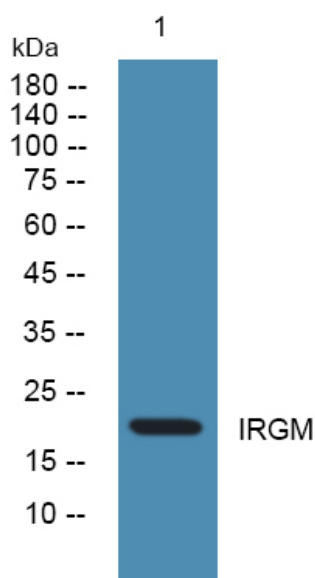
## matters needing attention

Avoid repeated freezing and thawing!

## Usage suggestions

This product can be used in immunological reaction related experiments. For more information, please consult technical personnel.

## Products Images



Western blot analysis of lysates from SH-SY5Y cells, primary antibody was diluted at 1:1000, 4° over night