



SLAF6 Polyclonal Antibody

Catalog No	BYab-07249
Isotype	IgG
Reactivity	Human;Mouse
Applications	WB;ELISA
Gene Name	SLAMF6 KALI UNQ6123/PRO20080
Protein Name	SLAM family member 6 (Activating NK receptor) (NK-T-B-antigen) (NTB-A) (CD antigen CD352)
Immunogen	Synthesized peptide derived from human protein . at AA range: 20-100
Specificity	SLAF6 Polyclonal Antibody detects endogenous levels of protein.
Formulation	Liquid in PBS containing 50% glycerol, and 0.02% sodium azide.
Source	Polyclonal, Rabbit,IgG
Purification	The antibody was affinity-purified from rabbit antiserum by affinity-chromatography using epitope-specific immunogen.
Dilution	WB 1:500-2000 ELISA 1:5000-20000
Concentration	1 mg/ml
Purity	≥90%
Storage Stability	-20°C/1 year
Synonyms	
Observed Band	36kD
Cell Pathway	Cell membrane ; Single-pass type I membrane protein .
Tissue Specificity	Expressed by all (resting and activated) natural killer cells (NK), T- and B-lymphocytes (PubMed:11489943). Increased surface expression on T-cells of systemic lupus erythematosus (SLE) patients (PubMed:22184727).
Function	function:Triggers cytolytic activity only in natural killer cells (NK) expressing high surface densities of natural cytotoxicity receptors.,PTM:Phosphorylated.,similarity:Contains 1 Ig-like (immunoglobulin-like) domain.,subunit:Homodimer. Interacts with PTN6 and, upon phosphorylation, with PTN11 and SH2D1A/SAP.,tissue specificity:Expressed by all (resting and activated) natural killer cells (NK), T- and B-lymphocytes.,
Background	The protein encoded by this gene is a type I transmembrane protein, belonging to the CD2 subfamily of the immunoglobulin superfamily. This encoded protein is expressed on Natural killer (NK), T, and B lymphocytes. It undergoes tyrosine

Nanjing BYabscience technology Co.,Ltd



phosphorylation and associates with the Src homology 2 domain-containing protein (SH2D1A) as well as with SH2 domain-containing phosphatases (SHPs). It functions as a coreceptor in the process of NK cell activation. It can also mediate inhibitory signals in NK cells from X-linked lymphoproliferative patients. Alternative splicing results in multiple transcript variants encoding distinct isoforms.[provided by RefSeq, May 2010],

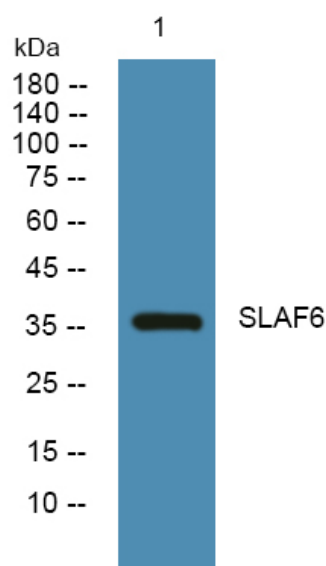
matters needing attention

Avoid repeated freezing and thawing!

Usage suggestions

This product can be used in immunological reaction related experiments. For more information, please consult technical personnel.

Products Images



Western blot analysis of lysates from PC12 cells, primary antibody was diluted at 1:1000, 4° over night