



# PGS1 Polyclonal Antibody

<b>Catalog No</b>	BYab-07227
<b>Isotype</b>	IgG
<b>Reactivity</b>	Human;Rat;Mouse
<b>Applications</b>	WB;IHC
<b>Gene Name</b>	BGN SLRR1A
<b>Protein Name</b>	Biglycan (Bone/cartilage proteoglycan I) (PG-S1)
<b>Immunogen</b>	Synthesized peptide derived from human protein . at AA range: 110-190
<b>Specificity</b>	PGS1 Polyclonal Antibody detects endogenous levels of protein.
<b>Formulation</b>	Liquid in PBS containing 50% glycerol, and 0.02% sodium azide.
<b>Source</b>	Polyclonal, Rabbit,IgG
<b>Purification</b>	The antibody was affinity-purified from rabbit antiserum by affinity-chromatography using epitope-specific immunogen.
<b>Dilution</b>	WB 1:500-2000 ELISA 1:5000-20000
<b>Concentration</b>	1 mg/ml
<b>Purity</b>	≥90%
<b>Storage Stability</b>	-20°C/1 year
<b>Synonyms</b>	
<b>Observed Band</b>	40kD
<b>Cell Pathway</b>	Secreted, extracellular space, extracellular matrix .
<b>Tissue Specificity</b>	Found in several connective tissues, especially in articular cartilages.
<b>Function</b>	function:May be involved in collagen fiber assembly.,PTM:The two attached glycosaminoglycan chains can be either chondroitin sulfate or dermatan sulfate.,similarity:Belongs to the small leucine-rich proteoglycan (SLRP) family. Class I subfamily.,similarity:Contains 12 LRR (leucine-rich) repeats.,subunit:Homodimer. Forms a ternary complex with MFAP2 and ELN.,tissue specificity:Found in several connective tissues, especially in articular cartilages.,
<b>Background</b>	This gene encodes a member of the small leucine-rich proteoglycan (SLRP) family of proteins. The encoded preproprotein is proteolytically processed to generate the mature protein, which plays a role in bone growth, muscle development and regeneration, and collagen fibril assembly in multiple tissues.

**Nanjing BYabscience technology Co.,Ltd**



This protein may also regulate inflammation and innate immunity. Additionally, the encoded protein may contribute to atherosclerosis and aortic valve stenosis in human patients. This gene and the related gene decorin are thought to be the result of a gene duplication. [provided by RefSeq, Nov 2015],

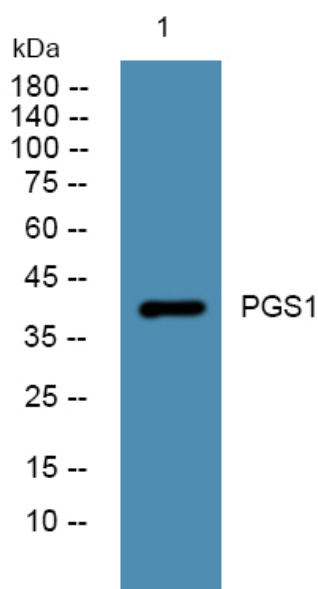
**matters needing attention**

Avoid repeated freezing and thawing!

**Usage suggestions**

This product can be used in immunological reaction related experiments. For more information, please consult technical personnel.

## Products Images



Western blot analysis of lysates from Jarkat cells, primary antibody was diluted at 1:1000, 4° over night