



# PAHO Polyclonal Antibody

Catalog No	BYab-07153
Isotype	IgG
Reactivity	Human;Rat;Mouse
Applications	WB;ELISA
Gene Name	PPY PNP
Protein Name	Pancreatic prohormone (Pancreatic polypeptide) (PP) (Obinipitide) [Cleaved into: Pancreatic hormone (PH); Pancreatic icosapeptide (PI)]
Immunogen	Synthesized peptide derived from human protein . at AA range: 10-90
Specificity	PAHO Polyclonal Antibody detects endogenous levels of protein.
Formulation	Liquid in PBS containing 50% glycerol, and 0.02% sodium azide.
Source	Polyclonal, Rabbit,IgG
Purification	The antibody was affinity-purified from rabbit antiserum by affinity-chromatography using epitope-specific immunogen.
Dilution	WB 1:500-2000 ELISA 1:5000-20000
Concentration	1 mg/ml
Purity	≥90%
Storage Stability	-20°C/1 year
Synonyms	
Observed Band	10kD
Cell Pathway	Secreted.
Tissue Specificity	Pancreas,Pancreatic tumor,Spleen,
Function	function:Pancreatic hormone is synthesized in pancreatic islets of Langerhans and acts as a regulator of pancreatic and gastrointestinal functions.,function:The physiological role for the icosapeptide has not yet been elucidated.,pharmaceutical:Obinipitide is under clinical trial by 7TM Pharma to be used for the treatment of obesity. Obinipitide is derived from pancreatic hormone by having Gln-63.,similarity:Belongs to the NPY family.,
Background	This gene encodes a member of the neuropeptide Y (NPY) family of peptides. The encoded 95 aa preproprotein is synthesized in the pancreatic islets of Langerhans and proteolytically processed to generate two peptide products. These products include the active pancreatic hormone of 36 aa and an icosapeptide of unknown function. This hormone acts as a regulator of pancreatic

Nanjing BYabscience technology Co.,Ltd



and gastrointestinal functions and may be important in the regulation of food intake. Plasma level of this hormone has been shown to be reduced in conditions associated with increased food intake and elevated in anorexia nervosa. In addition, infusion of this hormone in obese rodents has shown to decrease weight gain. Alternative splicing results in multiple transcript variants, at least one of which encodes an isoform that is proteolytically processed. [provided by RefSeq, Jan 2016],

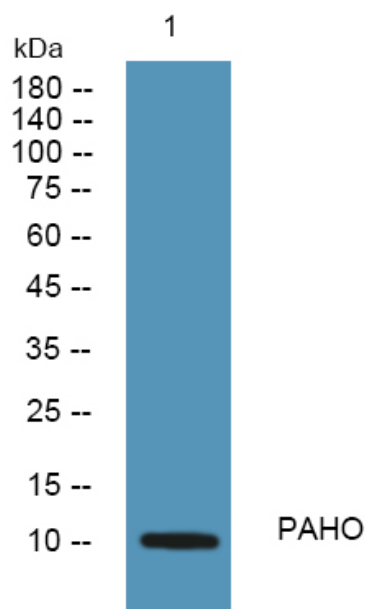
**matters needing attention**

Avoid repeated freezing and thawing!

**Usage suggestions**

This product can be used in immunological reaction related experiments. For more information, please consult technical personnel.

## Products Images



Western blot analysis of lysates from PC12 cells, primary antibody was diluted at 1:1000, 4° over night