



LYVE1 Polyclonal Antibody

Catalog No	BYab-07047
Isotype	IgG
Reactivity	Human;Mouse
Applications	WB;ELISA
Gene Name	LYVE1 CRSBP1 HAR XLKD1 UNQ230/PRO263
Protein Name	Lymphatic vessel endothelial hyaluronic acid receptor 1 (LYVE-1) (Cell surface retention sequence-binding protein 1) (CRSBP-1) (Extracellular link domain-containing protein 1) (Hyaluronic acid recepto
Immunogen	Synthesized peptide derived from part region of human protein
Specificity	LYVE1 Polyclonal Antibody detects endogenous levels of protein.
Formulation	Liquid in PBS containing 50% glycerol, and 0.02% sodium azide.
Source	Polyclonal, Rabbit,IgG
Purification	The antibody was affinity-purified from rabbit antiserum by affinity-chromatography using epitope-specific immunogen.
Dilution	WB 1:500-2000 ELISA 1:5000-20000
Concentration	1 mg/ml
Purity	≥90%
Storage Stability	-20°C/1 year
Synonyms	
Observed Band	35kD
Cell Pathway	Cell membrane ; Single-pass type I membrane protein . Localized to the plasma membrane and in vesicles near extranuclear membranes which may represent trans-Golgi network (TGN) and endosomes/prelysosomal compartments. Undergoes ligand-dependent internalization and recycling at the cell surface. Localizes at cell-cell junctions.
Tissue Specificity	Mainly expressed in endothelial cells lining lymphatic vessels.
Function	function:Ligand-specific transporter trafficking between intracellular organelles (TGN) and the plasma membrane. Plays a role in autocrine regulation of cell growth mediated by growth regulators containing cell surface retention sequence binding (CRS). May act as an hyaluronan (HA) transporter, either mediating its uptake for catabolism within lymphatic endothelial cells themselves, or its transport into the lumen of afferent lymphatic vessels for subsequent re-uptake and degradation in lymph nodes.,PTM:O-glycosylated.,similarity:Contains 1 Link

Nanjing BYabscience technology Co.,Ltd



domain.,subcellular location:Localized to the plasma membrane and in vesicles near extranuclear membranes which may represent trans-Golgi network (TGN) and endosomes/prelysosomal compartments. Undergoes ligand-dependent internalization and recycling at the cell surface.,subunit:Homodimer; disulfide-linked. Interacts with PDGFB and IGFBP3. Forms

Background

This gene encodes a type I integral membrane glycoprotein. The encoded protein acts as a receptor and binds to both soluble and immobilized hyaluronan. This protein may function in lymphatic hyaluronan transport and have a role in tumor metastasis. [provided by RefSeq, Jul 2008],

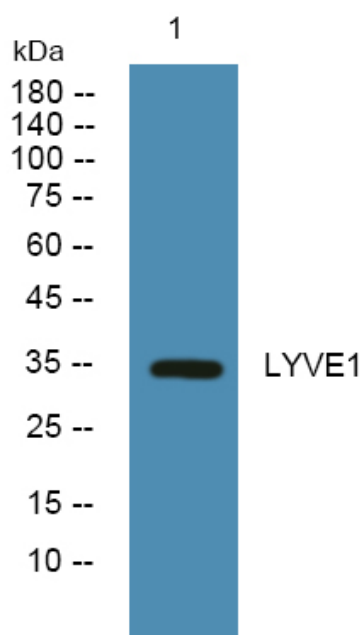
matters needing attention

Avoid repeated freezing and thawing!

Usage suggestions

This product can be used in immunological reaction related experiments. For more information, please consult technical personnel.

Products Images



Nanjing BYabscience technology Co.,Ltd

网址: www.njbybio.com

官方热线: 025-5229-8998

监督电话: 15950492658