



RAP1A Polyclonal Antibody

Catalog No	BYab-07043
Isotype	IgG
Reactivity	Human;Rat;Mouse
Applications	WB;ELISA
Gene Name	RAP1A KREV1
Protein Name	Ras-related protein Rap-1A (C21KG) (G-22K) (GTP-binding protein smg p21A) (Ras-related protein Krev-1)
Immunogen	Synthesized peptide derived from part region of human protein
Specificity	RAP1A Polyclonal Antibody detects endogenous levels of protein.
Formulation	Liquid in PBS containing 50% glycerol, and 0.02% sodium azide.
Source	Polyclonal, Rabbit,IgG
Purification	The antibody was affinity-purified from rabbit antiserum by affinity-chromatography using epitope-specific immunogen.
Dilution	WB 1:500-2000 ELISA 1:5000-20000
Concentration	1 mg/ml
Purity	≥90%
Storage Stability	-20°C/1 year
Synonyms	
Observed Band	20kD
Cell Pathway	Cell membrane ; Lipid-anchor . Cytoplasm . Cytoplasm, perinuclear region . Cell junction . Early endosome . Recruited from early endosome to late endosome compartment after nerve growth factor (NGF) stimulation. Localized with RAPGEF2 at cell-cell junctions (By similarity). Colocalized with RAPGEF2 in the perinuclear region. .
Tissue Specificity	Brain,Platelet,Skin,Uterus,
Function	enzyme regulation:Activated by guanine nucleotide-exchange factors (GEF) EPAC and EPAC2 in a cAMP-dependent manner, and GFR.,function:Induces morphological reversion of a cell line transformed by a Ras oncogene. Counteracts the mitogenic function of Ras, at least partly because it can interact with Ras GAPs and RAF in a competitive manner.,similarity:Belongs to the small GTPase superfamily. Ras family.,subunit:In its GTP-bound form interacts with PLCE1 and RADIL. Interacts with SGSM1, SGSM2 and SGSM3.,

Nanjing BYabscience technology Co.,Ltd



Background

This gene encodes a member of the Ras family of small GTPases. The encoded protein undergoes a change in conformational state and activity, depending on whether it is bound to GTP or GDP. This protein is activated by several types of guanine nucleotide exchange factors (GEFs), and inactivated by two groups of GTPase-activating proteins (GAPs). The activation status of the encoded protein is therefore affected by the balance of intracellular levels of GEFs and GAPs. The encoded protein regulates signaling pathways that affect cell proliferation and adhesion, and may play a role in tumor malignancy. Pseudogenes of this gene have been defined on chromosomes 14 and 17. Alternative splicing results in multiple transcript variants. [provided by RefSeq, May 2014],

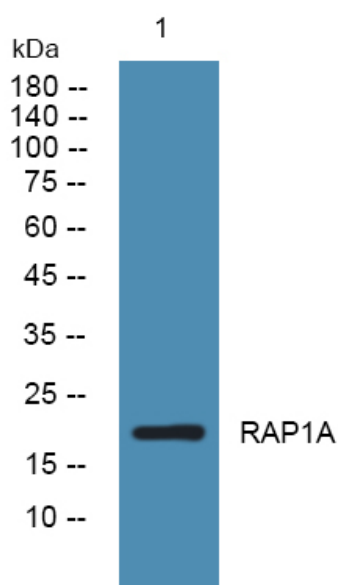
matters needing attention

Avoid repeated freezing and thawing!

Usage suggestions

This product can be used in immunological reaction related experiments. For more information, please consult technical personnel.

Products Images



Western blot analysis of lysates from DU145 cells, primary antibody was diluted at 1:1000, 4° over night