



# FAM3A Polyclonal Antibody

Catalog No	BYab-07025
Isotype	IgG
Reactivity	Human;Mouse
Applications	WB;ELISA
Gene Name	FAM3A 2-19 2.19
Protein Name	Protein FAM3A (Cytokine-like protein 2-19)
Immunogen	Synthesized peptide derived from part region of human protein
Specificity	FAM3A Polyclonal Antibody detects endogenous levels of protein.
Formulation	Liquid in PBS containing 50% glycerol, and 0.02% sodium azide.
Source	Polyclonal, Rabbit,IgG
Purification	The antibody was affinity-purified from rabbit antiserum by affinity-chromatography using epitope-specific immunogen.
Dilution	WB 1:500-2000 ELISA 1:5000-20000
Concentration	1 mg/ml
Purity	≥90%
Storage Stability	-20°C/1 year
Synonyms	
Observed Band	25kD
Cell Pathway	Secreted .
Tissue Specificity	In similar amounts in testis, pancreas, adrenal, placenta, brain, fetal brain, liver, kidney, skeletal muscle and heart.
Function	similarity:Belongs to the FAM3 family.,tissue specificity:In similar amounts in testis, pancreas, adrenal, placenta, brain, fetal brain, liver, kidney, skeletal muscle and heart.,
Background	This gene encodes a cytokine-like protein. The expression of this gene may be regulated by peroxisome proliferator-activated receptor gamma, and the encoded protein may be involved in the regulation of glucose and lipid metabolism. Alternative splicing results in multiple transcript variants. [provided by RefSeq, Aug 2013],
matters needing attention	Avoid repeated freezing and thawing!

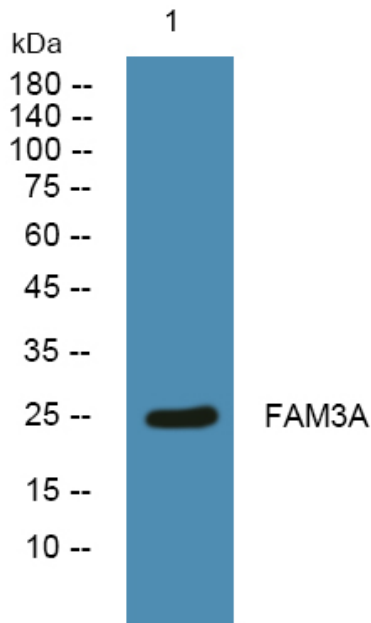
Nanjing BYabscience technology Co.,Ltd



### Usage suggestions

This product can be used in immunological reaction related experiments. For more information, please consult technical personnel.

### Products Images



Western blot analysis of lysates from KB cells, primary antibody was diluted at 1:1000, 4° over night