



RETNB Polyclonal Antibody

Catalog No	BYab-06996
Isotype	IgG
Reactivity	Human;Mouse
Applications	WB;ELISA
Gene Name	RETNLB CCRG FIZZ2 HXCP2 RETNL2 UNQ408/PRO770
Protein Name	Resistin-like beta (Colon and small intestine-specific cysteine-rich protein) (Colon carcinoma-related gene protein) (Cysteine-rich secreted protein A12-alpha-like 1) (Cysteine-rich secreted protein F
Immunogen	Synthesized peptide derived from part region of human protein AA range: 1-50
Specificity	RETNB Polyclonal Antibody detects endogenous levels of protein.
Formulation	Liquid in PBS containing 50% glycerol, and 0.02% sodium azide.
Source	Polyclonal, Rabbit,IgG
Purification	The antibody was affinity-purified from rabbit antiserum by affinity-chromatography using epitope-specific immunogen.
Dilution	WB 1:500-2000 ELISA 1:5000-20000
Concentration	1 mg/ml
Purity	≥90%
Storage Stability	-20°C/1 year
Synonyms	
Observed Band	12kD
Cell Pathway	Secreted.
Tissue Specificity	Expressed only in the gastrointestinal tract, particularly the colon.
Function	function:Probable hormone.,similarity:Belongs to the resistin/FIZZ family.,subunit:Homodimer; disulfide-linked.,tissue specificity:Expressed only in the gastrointestinal tract, particularly the colon.,
Background	function:Probable hormone.,similarity:Belongs to the resistin/FIZZ family.,subunit:Homodimer; disulfide-linked.,tissue specificity:Expressed only in the gastrointestinal tract, particularly the colon.,
matters needing attention	Avoid repeated freezing and thawing!

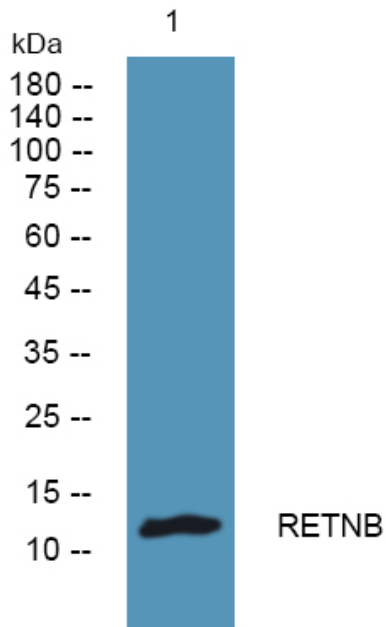
Nanjing BYabscience technology Co.,Ltd



Usage suggestions

This product can be used in immunological reaction related experiments. For more information, please consult technical personnel.

Products Images



Western blot analysis of lysates from K562 cells, primary antibody was diluted at 1:1000, 4° over night