



# FACE2 Polyclonal Antibody

<b>Catalog No</b>	BYab-06931
<b>Isotype</b>	IgG
<b>Reactivity</b>	Human;Rat;Mouse
<b>Applications</b>	WB;ELISA
<b>Gene Name</b>	RCE1 FACE2 RCE1A RCE1B
<b>Protein Name</b>	CAAX prenyl protease 2 (EC 3.4.22.-) (Farnesylated proteins-converting enzyme 2) (FACE-2) (Prenyl protein-specific endoprotease 2) (RCE1 homolog) (hRCE1)
<b>Immunogen</b>	Synthesized peptide derived from part region of human protein
<b>Specificity</b>	FACE2 Polyclonal Antibody detects endogenous levels of protein.
<b>Formulation</b>	Liquid in PBS containing 50% glycerol, and 0.02% sodium azide.
<b>Source</b>	Polyclonal, Rabbit,IgG
<b>Purification</b>	The antibody was affinity-purified from rabbit antiserum by affinity-chromatography using epitope-specific immunogen.
<b>Dilution</b>	WB 1:500-2000 ELISA 1:5000-20000
<b>Concentration</b>	1 mg/ml
<b>Purity</b>	≥90%
<b>Storage Stability</b>	-20°C/1 year
<b>Synonyms</b>	
<b>Observed Band</b>	36kD
<b>Cell Pathway</b>	Endoplasmic reticulum membrane ; Multi-pass membrane protein .
<b>Tissue Specificity</b>	Ubiquitous.
<b>Function</b>	function:Proteolytically removes the C-terminal three residues of farnesylated and geranylated proteins. Seems to be able to process K-Ras, N-Ras, H-Ras, RAP1B and G-gamma-1.,similarity:Belongs to the peptidase U48 family.,tissue specificity:Ubiquitous.,
<b>Background</b>	This gene encodes an integral membrane protein which is classified as a member of the metalloproteinase family. This enzyme is thought to function in the maintenance and processing of CAAX-type prenylated proteins. [provided by RefSeq, Jul 2008],
<b>matters needing attention</b>	Avoid repeated freezing and thawing!

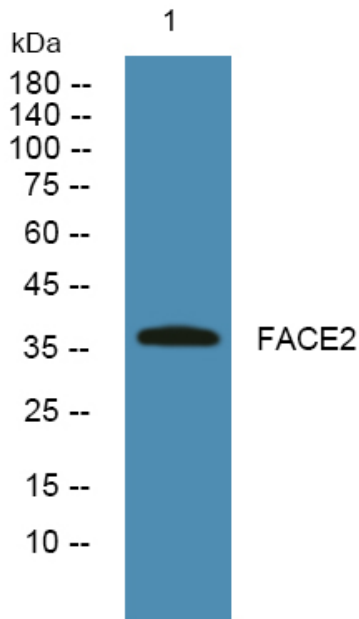
**Nanjing BYabs science technology Co.,Ltd**



## Usage suggestions

This product can be used in immunological reaction related experiments. For more information, please consult technical personnel.

## Products Images



Western blot analysis of lysates from K562 cells, primary antibody was diluted at 1:1000, 4° over night