



# FKBP8 Polyclonal Antibody

<b>Catalog No</b>	BYab-06915
<b>Isotype</b>	IgG
<b>Reactivity</b>	Human;Mouse;Rat
<b>Applications</b>	WB;ELISA
<b>Gene Name</b>	FKBP8 FKBP38
<b>Protein Name</b>	Peptidyl-prolyl cis-trans isomerase FKBP8 (PPIase FKBP8) (EC 5.2.1.8) (38 kDa FK506-binding protein) (38 kDa FKBP) (FKBP-38) (hFKBP38) (FK506-binding protein 8) (FKBP-8) (FKBPR38) (Rotamase)
<b>Immunogen</b>	Synthesized peptide derived from part region of human protein
<b>Specificity</b>	FKBP8 Polyclonal Antibody detects endogenous levels of protein.
<b>Formulation</b>	Liquid in PBS containing 50% glycerol, and 0.02% sodium azide.
<b>Source</b>	Polyclonal, Rabbit,IgG
<b>Purification</b>	The antibody was affinity-purified from rabbit antiserum by affinity-chromatography using epitope-specific immunogen.
<b>Dilution</b>	WB 1:500-2000 ELISA 1:5000-20000
<b>Concentration</b>	1 mg/ml
<b>Purity</b>	≥90%
<b>Storage Stability</b>	-20°C/1 year
<b>Synonyms</b>	
<b>Observed Band</b>	45kD
<b>Cell Pathway</b>	Mitochondrion . Mitochondrion membrane ; Single-pass membrane protein; Cytoplasmic side .; [Isoform 1]: Mitochondrion membrane ; Single-pass membrane protein; Cytoplasmic side .; [Isoform 3]: Mitochondrion membrane ; Single-pass membrane protein; Cytoplasmic side .
<b>Tissue Specificity</b>	Widely expressed. Highest levels seen in the brain. Highly abundant in the retina.
<b>Function</b>	catalytic activity:Peptidylproline (omega=180) = peptidylproline (omega=0).,caution:It is uncertain whether Met-1 or Met-58 is the initiator.,cofactor:Calcium.,function:Constitutively inactive PPIase, which becomes active when bound to calmodulin and calcium. Seems to act as a chaperone for BCL2, targets it to the mitochondria and modulates its phosphorylation state. The BCL2/FKBP8/calmodulin/calcium complex probably interferes with the binding of BCL2 to its targets. The active form of FKBP8 may therefore play a role in the regulation of apoptosis.,miscellaneous:Binds the immunosuppressant FK506 only

Nanjing BYabscience technology Co.,Ltd



in its calmodulin/calcium activated form.,sequence caution:The first part of the cDNA maps to the same locus, but in opposite orientation.,similarity:Contains 1 PPIase FKBP-type domain.,similarity:Contains 3 TPR repeats.,subunit:Homomultimers or heteromultimers (Potential). Forms heterodime

**Background**

The protein encoded by this gene is a member of the immunophilin protein family, which play a role in immunoregulation and basic cellular processes involving protein folding and trafficking. Unlike the other members of the family, this encoded protein does not seem to have PPIase/rotamase activity. It may have a role in neurons associated with memory function. [provided by RefSeq, Jul 2008],

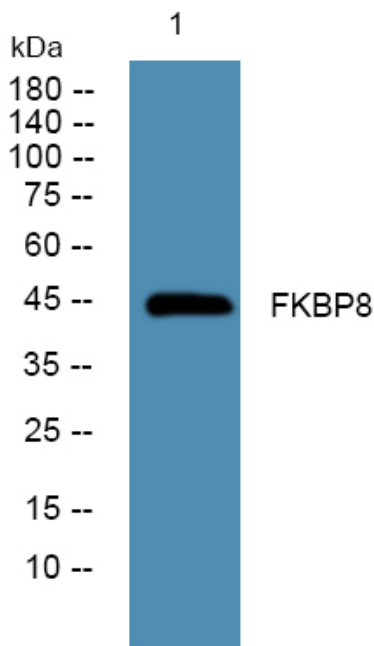
**matters needing attention**

Avoid repeated freezing and thawing!

**Usage suggestions**

This product can be used in immunological reaction related experiments. For more information, please consult technical personnel.

**Products Images**



Western blot analysis of lysates from KB cells, primary antibody was diluted at 1:1000, 4° over night