



# AES Polyclonal Antibody

<b>Catalog No</b>	BYab-06909
<b>Isotype</b>	IgG
<b>Reactivity</b>	Human;Rat;Mouse
<b>Applications</b>	WB;ELISA
<b>Gene Name</b>	AES GRG
<b>Protein Name</b>	Amino-terminal enhancer of split (Amino enhancer of split) (Gp130-associated protein GAM) (Protein ESP1) (Protein GRG)
<b>Immunogen</b>	Synthesized peptide derived from part region of human protein
<b>Specificity</b>	AES Polyclonal Antibody detects endogenous levels of protein.
<b>Formulation</b>	Liquid in PBS containing 50% glycerol, and 0.02% sodium azide.
<b>Source</b>	Polyclonal, Rabbit,IgG
<b>Purification</b>	The antibody was affinity-purified from rabbit antiserum by affinity-chromatography using epitope-specific immunogen.
<b>Dilution</b>	WB 1:500-2000 ELISA 1:5000-20000
<b>Concentration</b>	1 mg/ml
<b>Purity</b>	≥90%
<b>Storage Stability</b>	-20°C/1 year
<b>Synonyms</b>	
<b>Observed Band</b>	21kD
<b>Cell Pathway</b>	Nucleus .
<b>Tissue Specificity</b>	Found predominantly in muscle, heart and Placenta. In fetal tissues, abundantly expressed in the heart, lung, kidney, brain and liver.
<b>Function</b>	domain:Lacks the C-terminal WD repeats.,function:Acts as dominant repressor towards other family members. Inhibits NF-kappa-B-regulated gene expression. May be required for the initiation and maintenance of the differentiated state.,similarity:Belongs to the WD repeat Groucho/TLE family.,subunit:Homooligomer and heterooligomer with other family members. Binds TCF7 (By similarity). Binds the NF-kappa-B subunit RELA. Interacts with PHF12.,tissue specificity:Found predominantly in muscle, heart and Placenta. In fetal tissues, abundantly expressed in the heart, lung, kidney, brain and liver.,
<b>Background</b>	The protein encoded by this gene is similar in sequence to the amino terminus of Drosophila enhancer of split groucho, a protein involved in neurogenesis during embryonic development. The encoded protein, which belongs to the groucho/TLE

**Nanjing BYabscience technology Co.,Ltd**



family of proteins, can function as a homooligomer or as a heterooligomer with other family members to dominantly repress the expression of other family member genes. Three transcript variants encoding different isoforms have been found for this gene. [provided by RefSeq, Jul 2008],

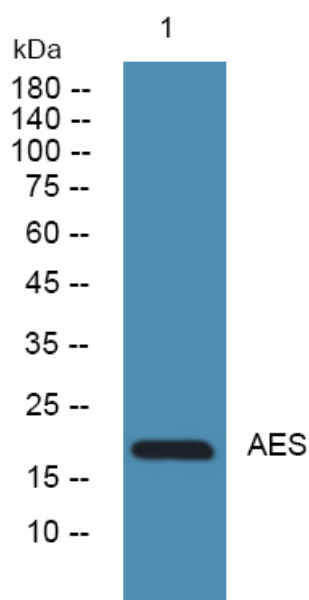
**matters needing attention**

Avoid repeated freezing and thawing!

**Usage suggestions**

This product can be used in immunological reaction related experiments. For more information, please consult technical personnel.

## Products Images



Western blot analysis of lysates from A431 cells, primary antibody was diluted at 1:1000, 4° over night