



TXND5 Polyclonal Antibody

Catalog No	BYab-06882
Isotype	IgG
Reactivity	Human;Mouse
Applications	WB;ELISA
Gene Name	TXNDC5 TLP46 UNQ364/PRO700
Protein Name	Thioredoxin domain-containing protein 5 (Endoplasmic reticulum resident protein 46) (ER protein 46) (ERp46) (Thioredoxin-like protein p46)
Immunogen	Synthesized peptide derived from part region of human protein
Specificity	TXND5 Polyclonal Antibody detects endogenous levels of protein.
Formulation	Liquid in PBS containing 50% glycerol, and 0.02% sodium azide.
Source	Polyclonal, Rabbit,IgG
Purification	The antibody was affinity-purified from rabbit antiserum by affinity-chromatography using epitope-specific immunogen.
Dilution	WB 1:500-2000 ELISA 1:5000-20000
Concentration	1 mg/ml
Purity	≥90%
Storage Stability	-20°C/1 year
Synonyms	
Observed Band	47kD
Cell Pathway	Endoplasmic reticulum lumen .
Tissue Specificity	Eye,Liver,Lymph,Lymph node,Ovary,PCR rescued clones,Retina,Spleen,Stomach,
Function	function:Involved in the development of lysosome-related organelles, such as melanosomes and platelet-dense granules.,function:Possesses thioredoxin activity. Has been shown to reduce insulin disulfide bonds. Also complements protein disulfide-isomerase deficiency in yeast.,similarity:Belongs to the Muted family.,similarity:Belongs to the protein disulfide isomerase family.,similarity:Contains 2 thioredoxin domains.,similarity:Contains 3 thioredoxin domains.,subunit:Interacts with pallidin. Interacts with dystrobrevin binding protein 1 and CNO/cappuccino (By similarity). Part of the biogenesis of lysosome-related organelles complex 1 (BLOC-1).,
Background	thioredoxin domain containing 5(TXNDC5) Homo sapiens This gene encodes a protein-disulfide isomerase. Its expression is induced by hypoxia and its role

Nanjing BYabscience technology Co.,Ltd



may be to protect hypoxic cells from apoptosis. Alternative splicing results in multiple transcript variants. Read-through transcription also exists between this gene and the neighboring upstream MUTED (muted homolog) gene. [provided by RefSeq, Dec 2010],

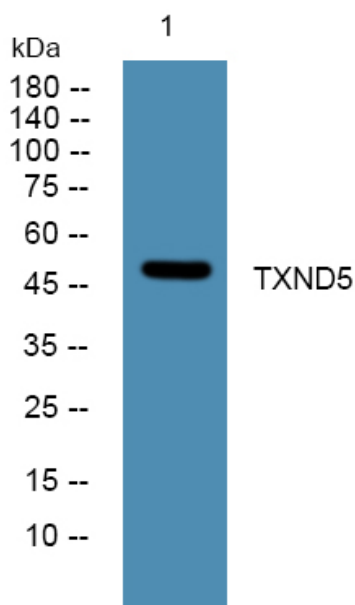
matters needing attention

Avoid repeated freezing and thawing!

Usage suggestions

This product can be used in immunological reaction related experiments. For more information, please consult technical personnel.

Products Images



Western blot analysis of lysates from K562 cells, primary antibody was diluted at 1:1000, 4° over night