



FCN1 Polyclonal Antibody

Catalog No	BYab-06826
Isotype	IgG
Reactivity	Human;Rat;Mouse
Applications	WB;ELISA
Gene Name	FCN1 FCNM
Protein Name	Ficolin-1 (Collagen/fibrinogen domain-containing protein 1) (Ficolin-A) (Ficolin-alpha) (M-ficolin)
Immunogen	Synthesized peptide derived from part region of human protein
Specificity	FCN1 Polyclonal Antibody detects endogenous levels of protein.
Formulation	Liquid in PBS containing 50% glycerol, and 0.02% sodium azide.
Source	Polyclonal, Rabbit,IgG
Purification	The antibody was affinity-purified from rabbit antiserum by affinity-chromatography using epitope-specific immunogen.
Dilution	WB 1:500-2000 ELISA 1:5000-20000
Concentration	1 mg/ml
Purity	≥90%
Storage Stability	-20°C/1 year
Synonyms	
Observed Band	35kD
Cell Pathway	Secreted . Cell membrane ; Peripheral membrane protein ; Extracellular side . Found on the monocyte and granulocyte surface (PubMed:20400674).
Tissue Specificity	Peripheral blood leukocytes, monocytes and granulocytes. Also detected in spleen, lung, and thymus, may be due to the presence of tissue macrophages or trapped blood in these tissues. Not detected on lymphocytes.
Function	function:Involved in serum exerting lectin activity. Binds GlcNAc.,similarity:Belongs to the ficolin lectin family.,similarity:Contains 1 collagen-like domain.,similarity:Contains 1 fibrinogen C-terminal domain.,subcellular location:Found on the monocyte surface.,subunit:Homopolymer. Interacts with elastin.,tissue specificity:Peripheral blood leukocytes. Also detected in spleen, lung, and thymus, may be due to the presence of tissue macrophages or trapped blood in these tissues. Not detected on lymphocytes and granulocytes.,

Nanjing BYabscience technology Co.,Ltd



Background

ficolin 1(FCN1) Homo sapiens The ficolin family of proteins are characterized by the presence of a leader peptide, a short N-terminal segment, followed by a collagen-like region, and a C-terminal fibrinogen-like domain. The collagen-like and the fibrinogen-like domains are also found separately in other proteins such as complement protein C1q, C-type lectins known as collectins, and tenascins. However, all these proteins recognize different targets, and are functionally distinct. Ficolin 1 encoded by FCN1 is predominantly expressed in the peripheral blood leukocytes, and has been postulated to function as a plasma protein with elastin-binding activity. [provided by RefSeq, Jul 2008],

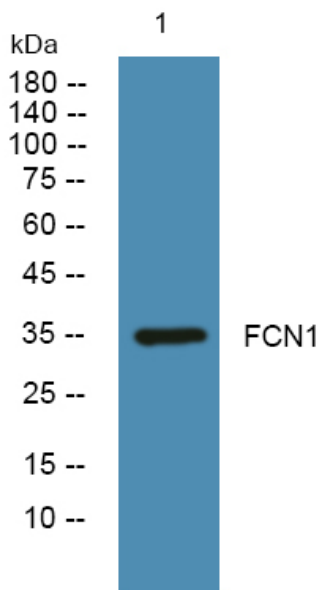
matters needing attention

Avoid repeated freezing and thawing!

Usage suggestions

This product can be used in immunological reaction related experiments. For more information, please consult technical personnel.

Products Images



Western blot analysis of lysates from A431 cells, primary antibody was diluted at 1:1000, 4° over night