



TMED1 Polyclonal Antibody

Catalog No	BYab-06797
Isotype	IgG
Reactivity	Human;Rat;Mouse
Applications	WB;ELISA
Gene Name	TMED1 IL1RL1L IL1RL1LG
Protein Name	Transmembrane emp24 domain-containing protein 1 (Interleukin-1 receptor-like 1 ligand) (Putative T1/ST2 receptor-binding protein) (p24 family protein gamma-1) (Tp24) (p24gamma1)
Immunogen	Synthesized peptide derived from part region of human protein
Specificity	TMED1 Polyclonal Antibody detects endogenous levels of protein.
Formulation	Liquid in PBS containing 50% glycerol, and 0.02% sodium azide.
Source	Polyclonal, Rabbit,IgG
Purification	The antibody was affinity-purified from rabbit antiserum by affinity-chromatography using epitope-specific immunogen.
Dilution	WB 1:500-2000 ELISA 1:5000-20000
Concentration	1 mg/ml
Purity	≥90%
Storage Stability	-20°C/1 year
Synonyms	
Observed Band	24kD
Cell Pathway	Cell membrane ; Single-pass type I membrane protein . Endoplasmic reticulum membrane ; Single-pass type I membrane protein . Golgi apparatus, cis-Golgi network membrane ; Single-pass type I membrane protein . Endoplasmic reticulum-Golgi intermediate compartment membrane ; Single-pass type I membrane protein .
Tissue Specificity	Widely expressed.
Function	function:Potential role in protein trafficking.,similarity:Belongs to the EMP24/GP25L family.,similarity:Contains 1 GOLD domain.,subunit:May interact with IL1RL1.,tissue specificity:Widely expressed.,
Background	This gene belongs to the TMED (transmembrane emp24 domain-containing) protein family, which is involved in the vesicular trafficking of proteins. The protein encoded by this gene was identified by its interaction with interleukin 1 receptor-like 1 (IL1RL1) and may play a role in innate immunity. This protein lacks

Nanjing BYabscience technology Co.,Ltd



any similarity to other interleukin 1 ligands. Alternative splicing results in multiple transcript variants of this gene. [provided by RefSeq, Jul 2013],

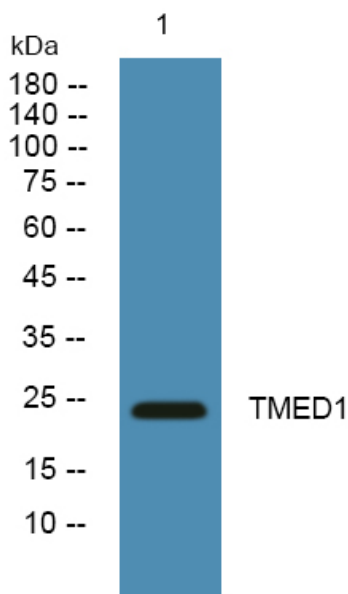
matters needing attention

Avoid repeated freezing and thawing!

Usage suggestions

This product can be used in immunological reaction related experiments. For more information, please consult technical personnel.

Products Images



Western blot analysis of lysates from K562 cells, primary antibody was diluted at 1:1000, 4°over night