



CLC10 Polyclonal Antibody

Catalog No	BYab-06785
Isotype	IgG
Reactivity	Human;Rat;Mouse
Applications	WB IF;ELISA
Gene Name	CLEC10A CLECSF13 CLECSF14 HML
Protein Name	C-type lectin domain family 10 member A (C-type lectin superfamily member 14) (Macrophage lectin 2) (CD antigen CD301)
Immunogen	Synthesized peptide derived from part region of human protein AA range: 191-240
Specificity	CLC10 Polyclonal Antibody detects endogenous levels of protein.
Formulation	Liquid in PBS containing 50% glycerol, and 0.02% sodium azide.
Source	Polyclonal, Rabbit,IgG
Purification	The antibody was affinity-purified from rabbit antiserum by affinity-chromatography using epitope-specific immunogen.
Dilution	WB 1:500-2000 IF 1:100-300 ELISA 1:5000-20000 Not yet tested in other applications.
Concentration	1 mg/ml
Purity	≥90%
Storage Stability	-20°C/1 year
Synonyms	
Observed Band	34kD
Cell Pathway	Membrane ; Single-pass type II membrane protein .
Tissue Specificity	Brain,Peripheral blood monocyte,Testis,
Function	function:Probable role in regulating adaptive and innate immune responses. Binds in a calcium-dependent manner to terminal galactose and N-acetylgalactosamine units, linked to serine or threonine. These sugar moieties are known as Tn-Ag and are expressed in a variety of carcinoma cells.,online information:MGL,similarity:Contains 1 C-type lectin domain.,
Background	This gene encodes a member of the C-type lectin/C-type lectin-like domain (CTL/CTLD) superfamily. Members of this family share a common protein fold and have diverse functions, such as cell adhesion, cell-cell signalling, glycoprotein turnover, and roles in inflammation and immune response. The encoded type 2 transmembrane protein may function as a cell surface antigen. Two transcript

Nanjing BYabscience technology Co.,Ltd



variants encoding distinct isoforms have been identified for this gene. [provided by RefSeq, Jul 2008],

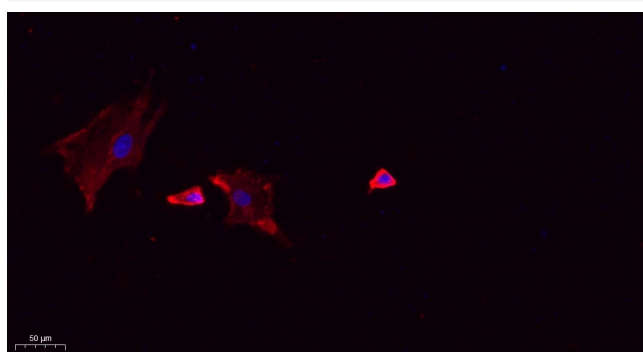
matters needing attention

Avoid repeated freezing and thawing!

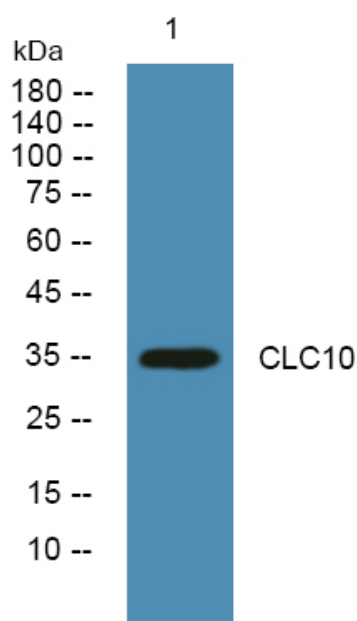
Usage suggestions

This product can be used in immunological reaction related experiments. For more information, please consult technical personnel.

Products Images



Immunofluorescence analysis of A549. 1, primary Antibody(red) was diluted at 1:200(4°C overnight). 2, Goat Anti Rabbit IgG (H&L) - Alexa Fluor 594 Secondary antibody was diluted at 1:1000(room temperature, 50min).3, Picture B: DAPI(blue) 10min.



Western blot analysis of lysates from KB cells, primary antibody was diluted at 1:1000, 4°over night

Nanjing BYabs science technology Co.,Ltd

网址: www.njbybio.com

官方热线: 025-5229-8998

监督电话: 15950492658