



NRK Polyclonal Antibody

Catalog No	BYab-06738
Isotype	IgG
Reactivity	Human;Mouse
Applications	WB;ELISA
Gene Name	NRK
Protein Name	Nik-related protein kinase (EC 2.7.11.1)
Immunogen	Synthesized peptide derived from part region of human protein
Specificity	NRK Polyclonal Antibody detects endogenous levels of protein.
Formulation	Liquid in PBS containing 50% glycerol, and 0.02% sodium azide.
Source	Polyclonal, Rabbit,IgG
Purification	The antibody was affinity-purified from rabbit antiserum by affinity-chromatography using epitope-specific immunogen.
Dilution	WB 1:500-2000 ELISA 1:5000-20000
Concentration	1 mg/ml
Purity	≥90%
Storage Stability	-20°C/1 year
Synonyms	
Observed Band	174kD
Cell Pathway	cytoplasm,integral component of membrane,
Tissue Specificity	Fetal kidney,Ovary,Placenta,
Function	catalytic activity:ATP + a protein = ADP + a phosphoprotein.,function:May phosphorylate cofilin-1 and induce actin polymerization through this process, during the late stages of embryogenesis. Involved in the TNF-alpha-induced signaling pathway.,similarity:Belongs to the protein kinase superfamily. STE Ser/Thr protein kinase family. STE20 subfamily.,similarity:Contains 1 CNH domain.,similarity:Contains 1 protein kinase domain.,
Background	Nik related kinase(NRK) Homo sapiens The mouse ortholog of this gene encodes a protein kinase required for JNK activation. The encoded protein may be involved in the induction of actin polymerization in late embryogenesis.[provided by RefSeq, Jun 2010],

Nanjing BYabscience technology Co.,Ltd



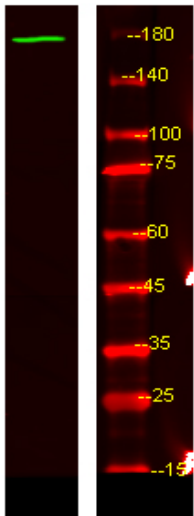
matters needing attention

Avoid repeated freezing and thawing!

Usage suggestions

This product can be used in immunological reaction related experiments. For more information, please consult technical personnel.

Products Images



Western Blot analysis of HEK293 lysis, using primary antibody at 1:1000 dilution. Secondary antibody(catalog#:RS23920) was diluted at 1:10000