



His-tag Polyclonal Antibody

| | |
|--------------------|--|
| Catalog No | BYab-04399 |
| Isotype | IgG |
| Reactivity | Species independent |
| Applications | WB;ELISA |
| Gene Name | His-Tag |
| Protein Name | His Tag |
| Immunogen | 6X His synthetic peptide conjugated to KLH. |
| Specificity | His-tag Polyclonal Antibody detects His-tagged recombinant proteins or His-tagged proteins overexpressed in cells. |
| Formulation | Liquid in PBS containing 50% glycerol, 0.5% BSA and 0.05% sodium azide. |
| Source | Polyclonal, Rabbit,IgG |
| Purification | The antibody was affinity-purified from rabbit antiserum by affinity-chromatography using epitope-specific immunogen. |
| Dilution | Western Blot: 1/1000 - 1/3000. ELISA: 1/20000. Not yet tested in other applications. |
| Concentration | 1 mg/ml |
| Purity | ≥90% |
| Storage Stability | -20°C/1 year |
| Synonyms | 6 His epitope tag; Hexa His tag; HHHHHH epitope tag; HHHHHH tag; His tag |
| Observed Band | 15kD |
| Cell Pathway | |
| Tissue Specificity | |
| Function | |
| Background | The his-tag is a series of six to nine histidine residues generally fused to either the carboxy or amino terminus of a recombinant protein. The small size of the his-tag, compared with other common epitope tags, makes it less likely to obstruct the target protein's structure or function and more suitable to use under denaturing conditions. The string of histidine residues binds to several types of immobilized metal ions, including nickel, cobalt and copper. The binding to metal ions under specific buffer conditions, allows for the simple purification and detection of his-tagged proteins. |

Nanjing BYabscience technology Co.,Ltd



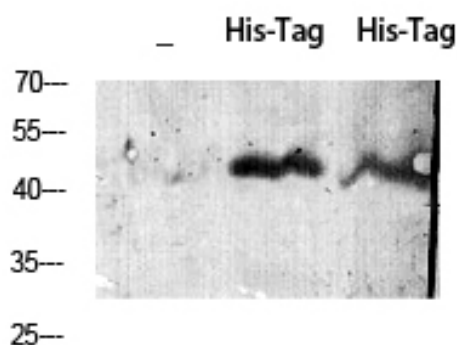
matters needing attention

Avoid repeated freezing and thawing!

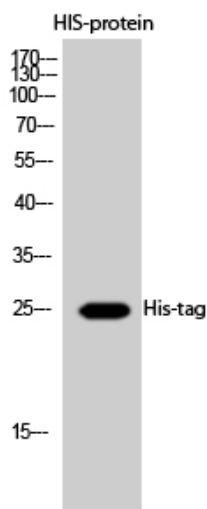
Usage suggestions

This product can be used in immunological reaction related experiments. For more information, please consult technical personnel.

Products Images



Western Blot analysis using His-tag Polyclonal Antibody against HEK293 cells transfected with vector overexpressing His tag (1) and untransfected (2). Antibody was diluted at 1:2000. Secondary antibody(catalog#:RS0002) was diluted at 1:20000



Western Blot analysis of HIS-protein cells using His-tag Polyclonal Antibody diluted at 1:2000. Secondary antibody(catalog#:RS0002) was diluted at 1:20000

Nanjing BYabs science technology Co.,Ltd

网址: www.njbybio.com

官方热线: 025-5229-8998

监督电话: 15950492658