



Kallistatin Polyclonal Antibody

Catalog No	BYab-04317
Isotype	IgG
Reactivity	Human;Rat;Mouse;
Applications	WB;IHC;IF;ELISA
Gene Name	SERPINA4
Protein Name	Kallistatin
Immunogen	The antiserum was produced against synthesized peptide derived from the Internal region of human SERPINA4. AA range:161-210
Specificity	Kallistatin Polyclonal Antibody detects endogenous levels of Kallistatin protein.
Formulation	Liquid in PBS containing 50% glycerol, 0.5% BSA and 0.02% sodium azide.
Source	Polyclonal, Rabbit,IgG
Purification	The antibody was affinity-purified from rabbit antiserum by affinity-chromatography using epitope-specific immunogen.
Dilution	WB: 1/500 - 1/2000. IHC-p: 1:100-300 ELISA: 1/20000.. IF 1:50-200
Concentration	1 mg/ml
Purity	≥90%
Storage Stability	-20°C/1 year
Synonyms	SERPINA4; KST; PI4; Kallistatin; Kallikrein inhibitor; Peptidase inhibitor 4; PI-4; Serpin A4
Observed Band	47kD
Cell Pathway	Secreted.
Tissue Specificity	Expressed by the liver and secreted in plasma.
Function	function:Inhibits human amidolytic and kininogenase activities of tissue kallikrein. Inhibition is achieved by formation of an equimolar, heat- and SDS-stable complex between the inhibitor and the enzyme, and generation of a small C-terminal fragment of the inhibitor due to cleavage at the reactive site by tissue kallikrein.,miscellaneous:Heparin blocks kallistatin's complex formation with tissue kallikrein and abolishes its inhibitory effect on tissue kallikrein's activity.,PTM:The N-terminus is blocked.,similarity:Belongs to the serpin family.,subunit:Monomer and some homodimers.,tissue specificity:Expressed by the liver and secreted in plasma.,

Nanjing BYabscience technology Co.,Ltd



Background

function: Inhibits human amidolytic and kininogenase activities of tissue kallikrein. Inhibition is achieved by formation of an equimolar, heat- and SDS-stable complex between the inhibitor and the enzyme, and generation of a small C-terminal fragment of the inhibitor due to cleavage at the reactive site by tissue kallikrein. miscellaneous: Heparin blocks kallistatin's complex formation with tissue kallikrein and abolishes its inhibitory effect on tissue kallikrein's activity. PTM: The N-terminus is blocked. similarity: Belongs to the serpin family. subunit: Monomer and some homodimers. tissue specificity: Expressed by the liver and secreted in plasma.

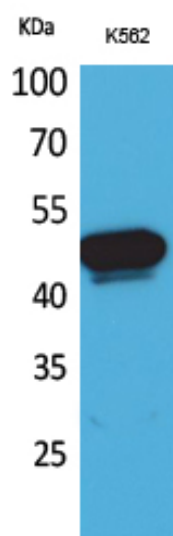
matters needing attention

Avoid repeated freezing and thawing!

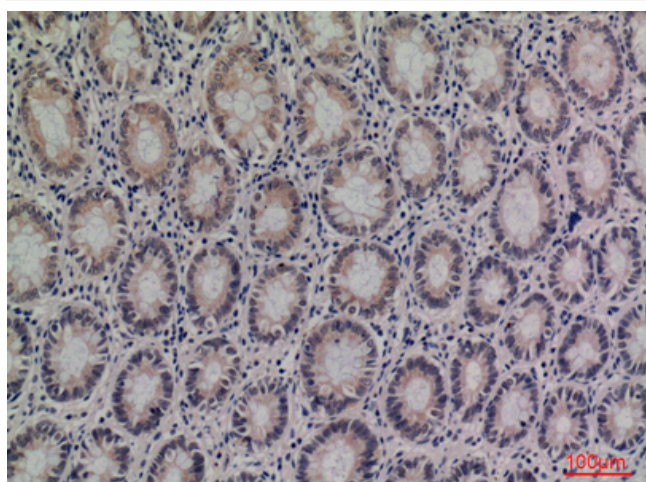
Usage suggestions

This product can be used in immunological reaction related experiments. For more information, please consult technical personnel.

Products Images



Western Blot analysis of K562 cells using Kallistatin Polyclonal Antibody. Secondary antibody (catalog#: RS0002) was diluted at 1:20000



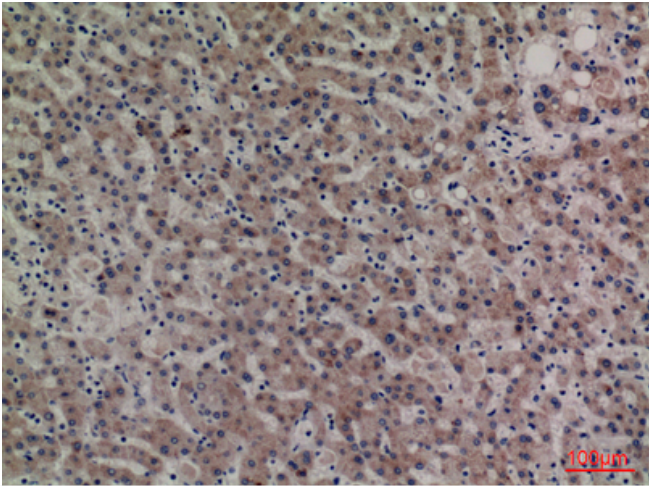
Immunohistochemical analysis of paraffin-embedded human-colon, antibody was diluted at 1:100

Nanjing BYabscience technology Co.,Ltd

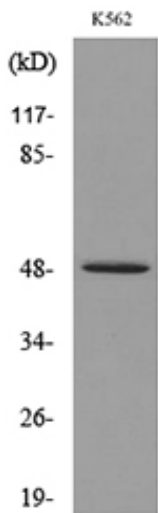
网址: www.njbybio.com

官方热线: 025-5229-8998

监督电话: 15950492658



Immunohistochemical analysis of paraffin-embedded human-liver, antibody was diluted at 1:100



Western blot analysis of lysate from K562 cells, using SERPINA4 Antibody.