



Stathmin-2 Polyclonal Antibody

Catalog No	BYab-04300
Isotype	IgG
Reactivity	Human;Mouse;Rat
Applications	WB;IHC;IF;ELISA
Gene Name	STMN2
Protein Name	Stathmin-2
Immunogen	Synthesized peptide derived from the Internal region of human Stathmin-2.
Specificity	Stathmin-2 Polyclonal Antibody detects endogenous levels of Stathmin-2 protein.
Formulation	Liquid in PBS containing 50% glycerol, 0.5% BSA and 0.02% sodium azide.
Source	Polyclonal, Rabbit,IgG
Purification	The antibody was affinity-purified from rabbit antiserum by affinity-chromatography using epitope-specific immunogen.
Dilution	WB: 1/500 - 1/2000. IHC-p: 1:100-300 ELISA: 1/5000.. IF 1:50-200
Concentration	1 mg/ml
Purity	≥90%
Storage Stability	-20°C/1 year
Synonyms	STMN2; SCG10; SCGN10; Stathmin-2; Superior cervical ganglion-10 protein; Protein SCG10
Observed Band	20kD
Cell Pathway	Cytoplasm . Cytoplasm, perinuclear region . Cell projection, growth cone. Membrane ; Peripheral membrane protein ; Cytoplasmic side . Cell projection, axon. Golgi apparatus. Endosome . Cell projection, lamellipodium. Associated with punctate structures in the perinuclear cytoplasm, axons, and growth cones of developing neurons. SCG10 exists in both soluble and membrane-bound forms. Colocalized with CIB1 in neurites of developing hippocampal primary neurons (By similarity). Colocalized with CIB1 in the cell body, neuritis and growth cones of neurons. Colocalized with CIB1 to the leading edge of lamellipodia. .
Tissue Specificity	Neuron specific.
Function	function:May play a role in neuronal differentiation, and in modulating membrane interaction with the cytoskeleton during neurite outgrowth.,PTM:Sumoylated.,similarity:Belongs to the stathmin family.,subcellular location:Associated with punctate structures in the perinuclear cytoplasm, axons, and growth cones of developing neurons. SCG10 exists in both soluble and

Nanjing BYabscience technology Co.,Ltd



membrane-bound forms.,tissue specificity:Neuron specific.,

Background

This gene encodes a member of the stathmin family of phosphoproteins. Stathmin proteins function in microtubule dynamics and signal transduction. The encoded protein plays a regulatory role in neuronal growth and is also thought to be involved in osteogenesis. Reductions in the expression of this gene have been associated with Down's syndrome and Alzheimer's disease. Alternatively spliced transcript variants have been observed for this gene. A pseudogene of this gene is located on the long arm of chromosome 6. [provided by RefSeq, Nov 2010],

matters needing attention

Avoid repeated freezing and thawing!

Usage suggestions

This product can be used in immunological reaction related experiments. For more information, please consult technical personnel.

Nanjing BYabscience technology Co.,Ltd

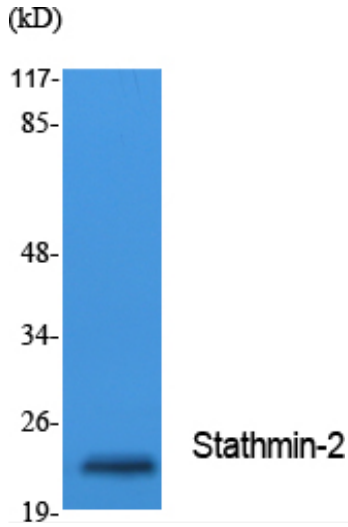
网址: www.njbybio.com

官方热线: 025-5229-8998

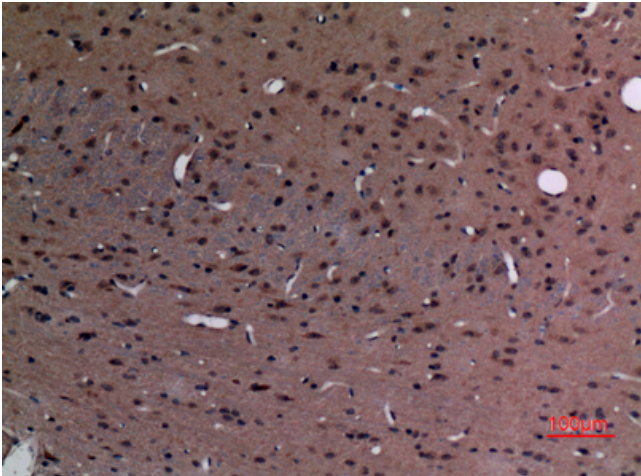
监督电话: 15950492658



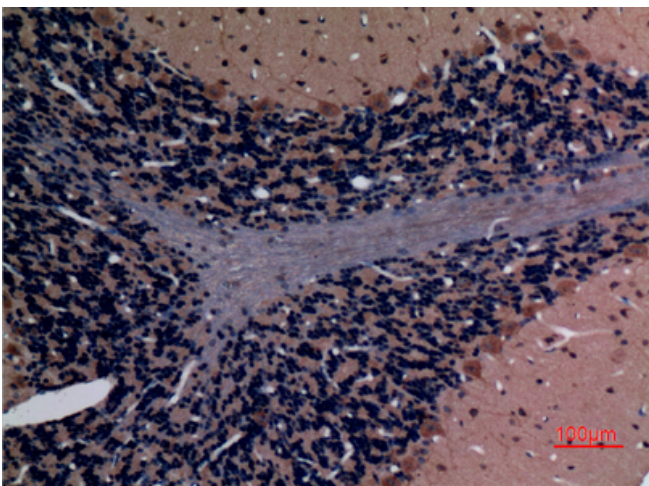
Products Images



Western Blot analysis of extracts from Jurkat cells, using Stathmin-2 Polyclonal Antibody. Secondary antibody(catalog#:RS0002) was diluted at 1:20000



Immunohistochemical analysis of paraffin-embedded rat-brain, antibody was diluted at 1:100



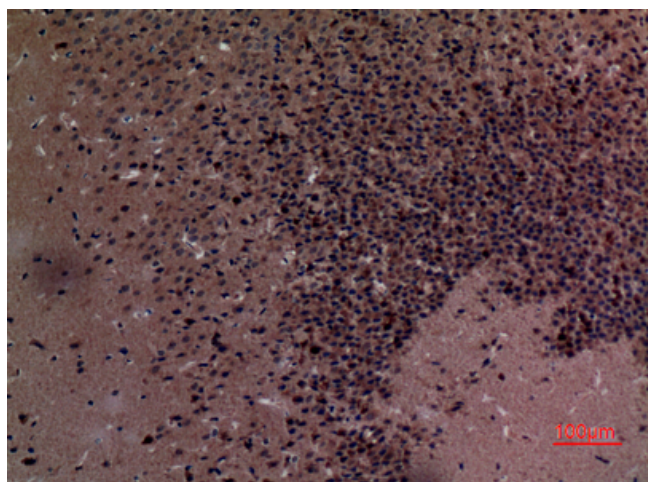
Immunohistochemical analysis of paraffin-embedded rat-brain, antibody was diluted at 1:100

Nanjing BYabs science technology Co.,Ltd

网址: www.njbybio.com

官方热线: 025-5229-8998

监督电话: 15950492658



Immunohistochemical analysis of paraffin-embedded mouse-brain, antibody was diluted at 1:100