



ZP1 Polyclonal Antibody

Catalog No	BYab-04282
Isotype	IgG
Reactivity	Human;Rat;Mouse;
Applications	WB;IHC;IF;ELISA
Gene Name	ZP1
Protein Name	Zona pellucida sperm-binding protein 1
Immunogen	The antiserum was produced against synthesized peptide derived from human ZP1. AA range:221-270
Specificity	ZP1 Polyclonal Antibody detects endogenous levels of ZP1 protein.
Formulation	Liquid in PBS containing 50% glycerol, 0.5% BSA and 0.02% sodium azide.
Source	Polyclonal, Rabbit,IgG
Purification	The antibody was affinity-purified from rabbit antiserum by affinity-chromatography using epitope-specific immunogen.
Dilution	WB: 1/500 - 1/2000. IHC: 1/100 - 1/300. ELISA: 1/10000.. IF 1:50-200
Concentration	1 mg/ml
Purity	≥90%
Storage Stability	-20°C/1 year
Synonyms	ZP1; Zona pellucida sperm-binding protein 1; Zona pellucida glycoprotein 1; Zp-1
Observed Band	70kD
Cell Pathway	[Processed zona pellucida sperm-binding protein 1]: Zona pellucida .; Cell membrane ; Single-pass type I membrane protein .
Tissue Specificity	Expressed in oocytes (at protein level).
Function	domain:The ZP domain is involved in the polymerization of the ZP proteins to form the zona pellucida.,function:The mammalian zona pellucida, which mediates species-specific sperm binding, induction of the acrosome reaction and prevents post-fertilization polyspermy, is composed of three to four glycoproteins, ZP1, ZP2, ZP3, and ZP4. ZP1 ensures the structural integrity of the zona pellucida.,PTM:O-glycosylated.,PTM:Proteolytically cleaved before the transmembrane segment to yield the secreted ectodomain incorporated in the zona pellucida.,similarity:Belongs to the ZP domain family. ZPB subfamily.,similarity:Contains 1 P-type (trefoil) domain.,similarity:Contains 1 ZP domain.,subunit:Polymers of ZP2 and ZP3 organized into long filaments cross-linked by ZP1 homodimers.,tissue specificity:Oocytes.,

Nanjing BYabscience technology Co.,Ltd



Background

The zona pellucida is an extracellular matrix that surrounds the oocyte and early embryo. It is composed primarily of three or four glycoproteins with various functions during fertilization and preimplantation development. The protein encoded by this gene ensures the structural integrity of the zona pellucida. Mutations in this gene are a cause of oocyte maturation defect and infertility. [provided by RefSeq, May 2014],

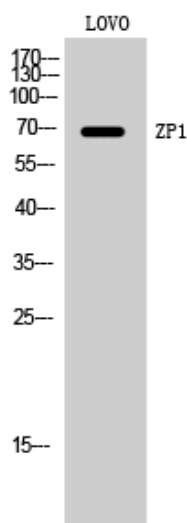
matters needing attention

Avoid repeated freezing and thawing!

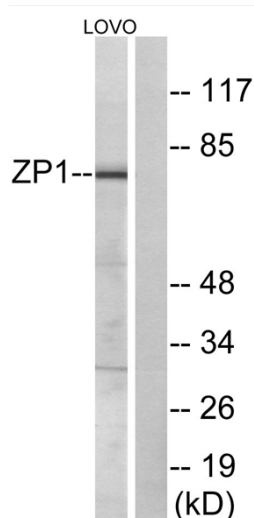
Usage suggestions

This product can be used in immunological reaction related experiments. For more information, please consult technical personnel.

Products Images



Western Blot analysis of LOVO cells using ZP1 Polyclonal Antibody. Secondary antibody(catalog#:RS0002) was diluted at 1:20000



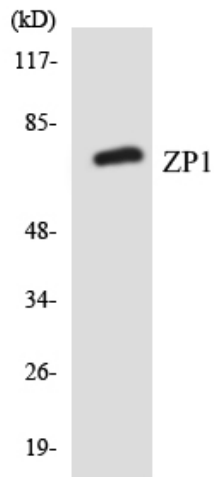
Western blot analysis of lysates from LOVO cells, using ZP1 Antibody. The lane on the right is blocked with the synthesized peptide.

Nanjing BYabscience technology Co.,Ltd

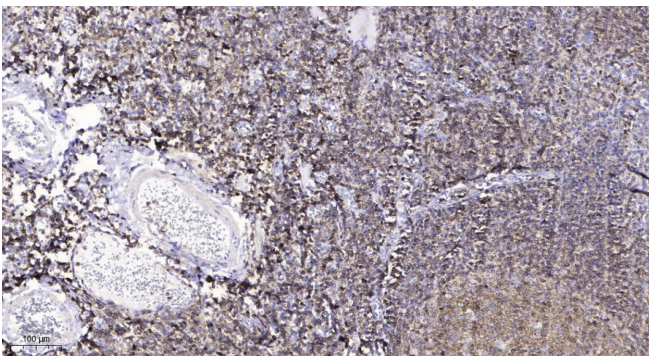
网址: www.njbybio.com

官方热线: 025-5229-8998

监督电话: 15950492658



Western blot analysis of the lysates from HeLa cells using ZP1 antibody.



Immunohistochemical analysis of paraffin-embedded human tonsil. 1, Antibody was diluted at 1:200(4° overnight). 2, Tris-EDTA,pH9.0 was used for antigen retrieval. 3,Secondary antibody was diluted at 1:200(room temperature, 45min).