



# ZnT-4 Polyclonal Antibody

<b>Catalog No</b>	BYab-04279
<b>Isotype</b>	IgG
<b>Reactivity</b>	Human;Mouse;Rat
<b>Applications</b>	WB;IHC;IF;ELISA
<b>Gene Name</b>	SLC30A4
<b>Protein Name</b>	Zinc transporter 4
<b>Immunogen</b>	The antiserum was produced against synthesized peptide derived from human SLC30A4. AA range:71-120
<b>Specificity</b>	ZnT-4 Polyclonal Antibody detects endogenous levels of ZnT-4 protein.
<b>Formulation</b>	Liquid in PBS containing 50% glycerol, 0.5% BSA and 0.02% sodium azide.
<b>Source</b>	Polyclonal, Rabbit,IgG
<b>Purification</b>	The antibody was affinity-purified from rabbit antiserum by affinity-chromatography using epitope-specific immunogen.
<b>Dilution</b>	WB: 1/500 - 1/2000. IHC: 1/100 - 1/300. ELISA: 1/5000.. IF 1:50-200
<b>Concentration</b>	1 mg/ml
<b>Purity</b>	≥90%
<b>Storage Stability</b>	-20°C/1 year
<b>Synonyms</b>	SLC30A4; ZNT4; Zinc transporter 4; ZnT-4; Solute carrier family 30 member 4
<b>Observed Band</b>	47kD
<b>Cell Pathway</b>	Endosome membrane ; Multi-pass membrane protein . Late endosome membrane ; Multi-pass membrane protein . Lysosome membrane ; Multi-pass membrane protein .
<b>Tissue Specificity</b>	Fetal brain,Malignant prostate,Mesangial cell,Testis,
<b>Function</b>	domain:Contains a histidine-rich region which is a ligand for zinc and an aspartate-rich region which is a potential ligand for zinc.,function:Probably involved in zinc transport out of the cytoplasm, maybe by sequestration into an intracellular compartment.,similarity:Belongs to the cation diffusion facilitator (CDF) transporter (TC 2.A.4) family. SLC30A subfamily.,
<b>Background</b>	Zinc is the second most abundant trace metal in the human body. It is an essential element, serving both a structural role, as in the formation of zinc fingers in DNA-binding proteins, and a catalytic role in metalloenzymes, such as pancreatic carboxypeptidases (e.g., MIM 114852), alkaline phosphatases (e.g.,

**Nanjing BYabscience technology Co.,Ltd**



MIM 171760), various dehydrogenases, and superoxide dismutases (e.g., MIM 147450). SLC30A4, or ZNT4, belongs to the ZNT family of zinc transporters. ZNTs are involved in transporting zinc out of the cytoplasm and have similar structures, consisting of 6 transmembrane domains and a histidine-rich cytoplasmic loop (Huang and Gitschier, 1997 [PubMed 9354792]).[supplied by OMIM, Mar 2008],

**matters needing attention**

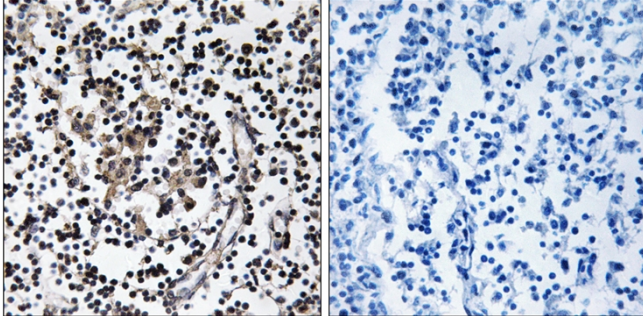
Avoid repeated freezing and thawing!

**Usage suggestions**

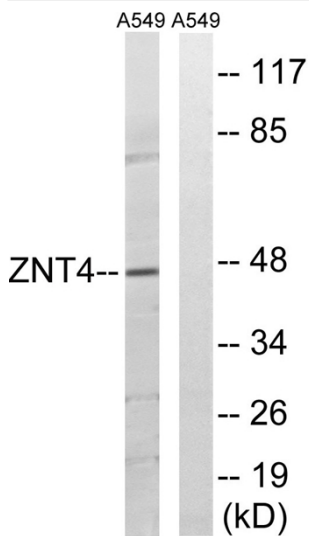
This product can be used in immunological reaction related experiments. For more information, please consult technical personnel.



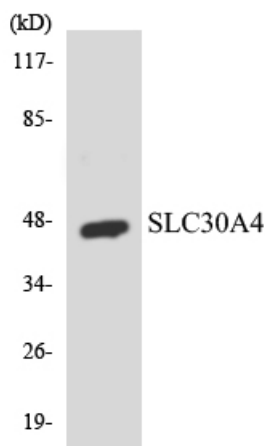
## Products Images



Immunohistochemistry analysis of paraffin-embedded human lymph node tissue, using SLC30A4 Antibody. The picture on the right is blocked with the synthesized peptide.



Western blot analysis of lysates from A549 cells, using SLC30A4 Antibody. The lane on the right is blocked with the synthesized peptide.



Western blot analysis of the lysates from 293 cells using SLC30A4 antibody.