



TTC23 Polyclonal Antibody

Catalog No	BYab-04261
Isotype	IgG
Reactivity	Human;Rat;Mouse;
Applications	WB;ELISA
Gene Name	TTC23
Protein Name	Tetratricopeptide repeat protein 23
Immunogen	The antiserum was produced against synthesized peptide derived from human TTC23. AA range:341-390
Specificity	TTC23 Polyclonal Antibody detects endogenous levels of TTC23 protein.
Formulation	Liquid in PBS containing 50% glycerol, 0.5% BSA and 0.02% sodium azide.
Source	Polyclonal, Rabbit,IgG
Purification	The antibody was affinity-purified from rabbit antiserum by affinity-chromatography using epitope-specific immunogen.
Dilution	Western Blot: 1/500 - 1/2000. ELISA: 1/40000. Not yet tested in other applications.
Concentration	1 mg/ml
Purity	≥90%
Storage Stability	-20°C/1 year
Synonyms	TTC23; HCC8; Tetratricopeptide repeat protein 23; TPR repeat protein 23; Cervical cancer proto-oncogene 8 protein; HCC-8
Observed Band	50kD
Cell Pathway	Cell projection, cilium . Colocalizes with EVC and IQCE at the EvC zone of primary cilia. .
Tissue Specificity	Colon,Coronary artery,Placenta,
Function	similarity:Contains 4 TPR repeats.,
Background	similarity:Contains 4 TPR repeats.,
matters needing attention	Avoid repeated freezing and thawing!

Nanjing BYabscience technology Co.,Ltd

网址: www.njbybio.com

官方热线: 025-5229-8998

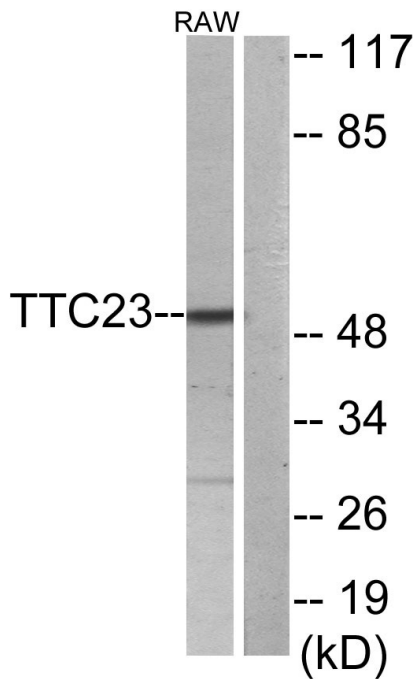
监督电话: 15950492658



Usage suggestions

This product can be used in immunological reaction related experiments. For more information, please consult technical personnel.

Products Images



Western blot analysis of lysates from RAW264.7 cells, using TTC23 Antibody. The lane on the right is blocked with the synthesized peptide.