



SEMA3C Polyclonal Antibody

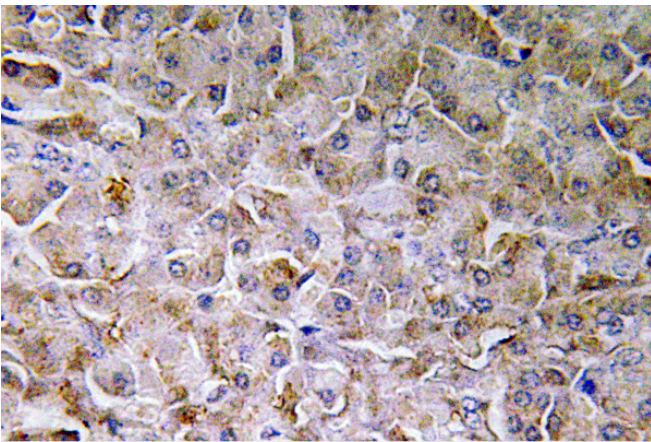
Catalog No	BYab-04192
Isotype	IgG
Reactivity	Human;Mouse;Rat
Applications	WB;IHC;IF;ELISA
Gene Name	SEMA3C
Protein Name	Semaphorin-3C
Immunogen	The antiserum was produced against synthesized peptide derived from human SEMA3C. AA range:701-750
Specificity	SEMA3C Polyclonal Antibody detects endogenous levels of SEMA3C protein.
Formulation	Liquid in PBS containing 50% glycerol, 0.5% BSA and 0.02% sodium azide.
Source	Polyclonal, Rabbit,IgG
Purification	The antibody was affinity-purified from rabbit antiserum by affinity-chromatography using epitope-specific immunogen.
Dilution	IHC: 1/100 - 1/300. ELISA: 1/40000.. IF 1:50-200
Concentration	1 mg/ml
Purity	≥90%
Storage Stability	-20°C/1 year
Synonyms	SEMA3C; SEMAE; Semaphorin-3C; Semaphorin-E; Sema E
Observed Band	
Cell Pathway	Secreted.
Tissue Specificity	Expressed intensely in the heart, skeletal muscle, colon, small intestine, ovary, testis, and prostate. Faint expression ubiquitously among other organs, including brain.
Function	function:May be involved in diverse cell survival mechanisms.,similarity:Belongs to the semaphorin family.,similarity:Contains 1 Ig-like C2-type (immunoglobulin-like) domain.,similarity:Contains 1 PSI domain.,similarity:Contains 1 Sema domain.,tissue specificity:Expressed intensely in the heart, skeletal muscle, colon, small intestine, ovary, testis, and prostate. Faint expression ubiquitously among other organs, including brain.,
Background	function:May be involved in diverse cell survival mechanisms.,similarity:Belongs to the semaphorin family.,similarity:Contains 1 Ig-like C2-type (immunoglobulin-like) domain.,similarity:Contains 1 PSI

Nanjing BYabs science technology Co.,Ltd



	domain.,similarity:Contains 1 Sema domain.,tissue specificity:Expressed intensely in the heart, skeletal muscle, colon, small intestine, ovary, testis, and prostate. Faint expression ubiquitously among other organs, including brain.,
matters needing attention	Avoid repeated freezing and thawing!
Usage suggestions	This product can be used in immunological reaction related experiments. For more information, please consult technical personnel.

Products Images



Immunohistochemistry analysis of SEMA3C antibody in paraffin-embedded human pancreas tissue.