



Sds22 Polyclonal Antibody

Catalog No	BYab-04190
Isotype	IgG
Reactivity	Human;Rat;Mouse;
Applications	WB;ELISA;IHC
Gene Name	PPP1R7
Protein Name	Protein phosphatase 1 regulatory subunit 7
Immunogen	The antiserum was produced against synthesized peptide derived from human PPP1R7. AA range:136-185
Specificity	Sds22 Polyclonal Antibody detects endogenous levels of Sds22 protein.
Formulation	Liquid in PBS containing 50% glycerol, 0.5% BSA and 0.02% sodium azide.
Source	Polyclonal, Rabbit,IgG
Purification	The antibody was affinity-purified from rabbit antiserum by affinity-chromatography using epitope-specific immunogen.
Dilution	WB 1:500-2000;IHC-p 1:50-300; ELISA 2000-20000
Concentration	1 mg/ml
Purity	≥90%
Storage Stability	-20°C/1 year
Synonyms	PPP1R7; SDS22; Protein phosphatase 1 regulatory subunit 7; Protein phosphatase 1 regulatory subunit 22
Observed Band	48kD
Cell Pathway	Nucleus .
Tissue Specificity	Widely expressed.
Function	function:Regulatory subunit of protein phosphatase 1.,similarity:Belongs to the SDS22 family.,similarity:Contains 10 LRR (leucine-rich) repeats.,subunit:Interacts with PPP1CA, PPP1CB and PPP1CC/PPP1G isoform 1.,tissue specificity:Widely expressed.,
Background	This gene encodes a protein subunit that regulates the activity of the serine/threonine phosphatase, protein phosphatase-1. The encoded protein is required for completion of the mitotic cycle and for targeting protein phosphatase-1 to mitotic kinetochores. Alternate splicing results in multiple transcript variants. [provided by RefSeq, Sep 2013],

Nanjing BYabscience technology Co.,Ltd



matters needing attention

Avoid repeated freezing and thawing!

Usage suggestions

This product can be used in immunological reaction related experiments. For more information, please consult technical personnel.

Nanjing BYabscience technology Co.,Ltd

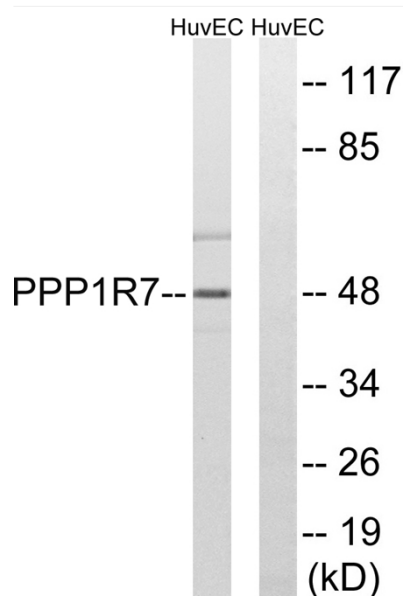
网址: www.njbybio.com

官方热线: 025-5229-8998

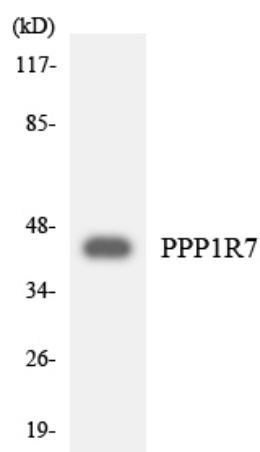
监督电话: 15950492658



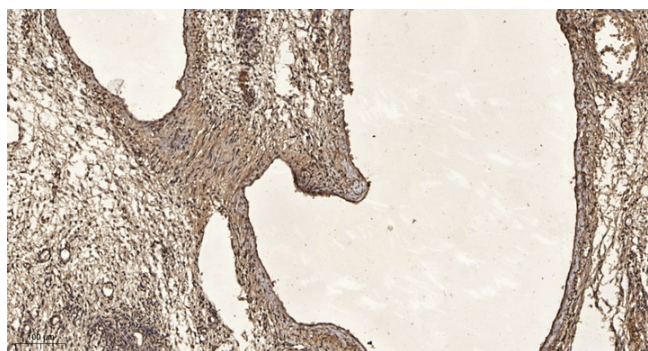
Products Images



Western blot analysis of lysates from HUVEC cells, using PPP1R7 Antibody. The lane on the right is blocked with the synthesized peptide.



Western blot analysis of the lysates from 293 cells using PPP1R7 antibody.



Immunohistochemical analysis of paraffin-embedded human oophoroma. 1, Antibody was diluted at 1:200(4° overnight). 2, Tris-EDTA,pH9.0 was used for antigen retrieval. 3,Secondary antibody was diluted at 1:200(room temperature, 45min).

Nanjing BYabs science technology Co.,Ltd

网址: www.njbybio.com

官方热线: 025-5229-8998

监督电话: 15950492658