



RUFY1 Polyclonal Antibody

Catalog No	BYab-04183
Isotype	IgG
Reactivity	Human;Mouse
Applications	WB;ELISA
Gene Name	RUFY1
Protein Name	RUN and FYVE domain-containing protein 1
Immunogen	The antiserum was produced against synthesized peptide derived from human RUFY1. AA range:139-188
Specificity	RUFY1 Polyclonal Antibody detects endogenous levels of RUFY1 protein.
Formulation	Liquid in PBS containing 50% glycerol, 0.5% BSA and 0.02% sodium azide.
Source	Polyclonal, Rabbit,IgG
Purification	The antibody was affinity-purified from rabbit antiserum by affinity-chromatography using epitope-specific immunogen.
Dilution	Western Blot: 1/500 - 1/2000. ELISA: 1/10000. Not yet tested in other applications.
Concentration	1 mg/ml
Purity	≥90%
Storage Stability	-20°C/1 year
Synonyms	RUFY1; RABIP4; ZFYVE12; RUN and FYVE domain-containing protein 1; FYVE-finger protein EIP1; La-binding protein 1; Rab4-interacting protein; Zinc finger FYVE domain-containing protein 12
Observed Band	80kD
Cell Pathway	Cytoplasm. Early endosome membrane; Peripheral membrane protein.
Tissue Specificity	Broadly expressed, with highest levels in lung, testis, kidney and brain.
Function	domain:The FYVE-type zinc finger domain mediates interactions with phosphatidylinositol 3-phosphate.,function:Binds phospholipid vesicles containing phosphatidylinositol 3-phosphate and participates in early endosomal trafficking.,PTM:Phosphorylated upon DNA damage, probably by ATM or ATR.,PTM:Phosphorylation on Tyr-389 and/or Tyr-400 is required for interaction with BMX and endosomal targeting.,similarity:Contains 1 FYVE-type zinc finger.,similarity:Contains 1 RUN domain.,subunit:Interacts with BMX. May interact with SSB. Interacts with RAB4 and RAB5 that have been activated by GTP-binding.,tissue specificity:Broadly expressed, with highest levels in lung,

Nanjing BYabs science technology Co.,Ltd



testis, kidney and brain.,

Background

RUN and FYVE domain containing 1(RUFY1) Homo sapiens This gene encodes a protein that contains a RUN domain and a FYVE-type zinc finger domain. The encoded protein binds to phosphatidylinositol-3-phosphate (PI3P) and plays a role in early endosomal trafficking, tethering and fusion through interactions with small GTPases including Rab4, Rab5 and Rab14. Alternatively spliced transcript variants encoding multiple isoforms have been observed for this gene. [provided by RefSeq, Dec 2011],

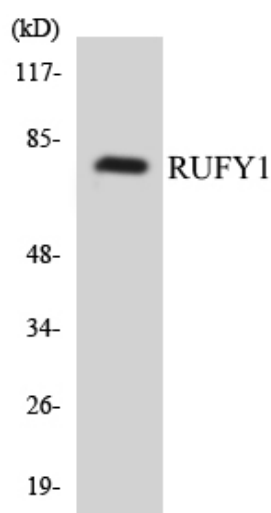
matters needing attention

Avoid repeated freezing and thawing!

Usage suggestions

This product can be used in immunological reaction related experiments. For more information, please consult technical personnel.

Products Images



Western blot analysis of the lysates from HUVECcells using RUFY1 antibody.

Nanjing BYabscience technology Co.,Ltd

网址: www.njbybio.com

官方热线: 025-5229-8998

监督电话: 15950492658