



RIN3 Polyclonal Antibody

| | |
|---------------------------|--|
| Catalog No | BYab-04176 |
| Isotype | IgG |
| Reactivity | Human;Rat;Mouse; |
| Applications | WB;ELISA;IHC |
| Gene Name | RIN3 |
| Protein Name | Ras and Rab interactor 3 |
| Immunogen | The antiserum was produced against synthesized peptide derived from human RIN3. AA range:391-440 |
| Specificity | RIN3 Polyclonal Antibody detects endogenous levels of RIN3 protein. |
| Formulation | Liquid in PBS containing 50% glycerol, 0.5% BSA and 0.02% sodium azide. |
| Source | Polyclonal, Rabbit,IgG |
| Purification | The antibody was affinity-purified from rabbit antiserum by affinity-chromatography using epitope-specific immunogen. |
| Dilution | WB 1:500-2000;IHC-p 1:50-300; ELISA 2000-20000 |
| Concentration | 1 mg/ml |
| Purity | ≥90% |
| Storage Stability | -20°C/1 year |
| Synonyms | RIN3; Ras and Rab interactor 3; Ras interaction/interference protein 3 |
| Observed Band | 107kD |
| Cell Pathway | Cytoplasm . Cytoplasmic vesicle . Early endosome . Activation of tyrosine phosphorylation signaling induces translocation to cytoplasmic vesicles. . |
| Tissue Specificity | Widely expressed. |
| Function | caution:The region from Asp-168 to Pro-327 is deduced from the genomic sequence by similarity to the mouse sequence.,function:Potential Ras effector protein. May function as a guanine nucleotide exchange (GEF), by exchanging bound GDP for free GTP.,similarity:Belongs to the RIN (Ras interaction/interference) family.,similarity:Contains 1 Ras-associating domain.,similarity:Contains 1 SH2 domain.,similarity:Contains 1 VPS9 domain.,subcellular location:Activation of tyrosine phosphorylation signaling induces translocation to cytoplasmic vesicles.,subunit:Interacts with RAB5B and BIN1.,tissue specificity:Widely expressed., |

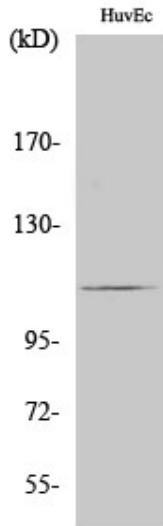
Nanjing BYabscience technology Co.,Ltd



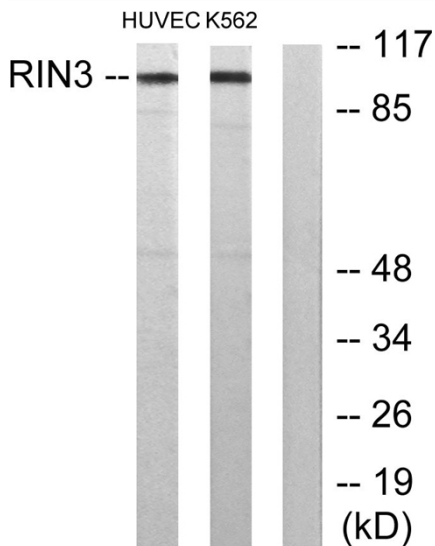
| | |
|---------------------------|--|
| Background | Summary: This protein encoded by this gene is a member of the RIN family of Ras interaction-interference proteins, which are binding partners to the RAB5 small GTPases. The protein functions as a guanine nucleotide exchange for RAB5B and RAB31. Alternative splicing results in multiple transcript variants. [provided by RefSeq, Feb 2016], |
| matters needing attention | Avoid repeated freezing and thawing! |
| Usage suggestions | This product can be used in immunological reaction related experiments. For more information, please consult technical personnel. |



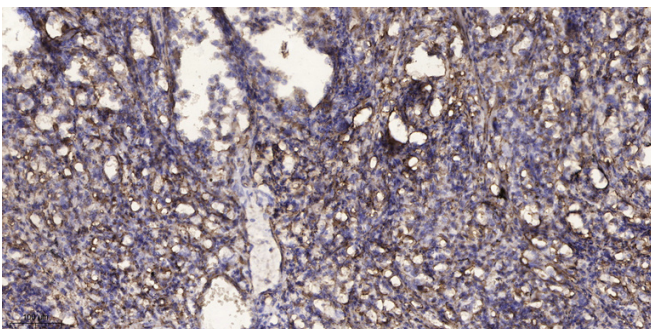
Products Images



Western Blot analysis of various cells using RIN3 Polyclonal Antibody



Western blot analysis of lysates from HUVEC and K562 cells, using RIN3 Antibody. The lane on the right is blocked with the synthesized peptide.



Immunohistochemical analysis of paraffin-embedded human Squamous cell carcinoma of lung. 1, Antibody was diluted at 1:200(4° overnight). 2, Tris-EDTA,pH9.0 was used for antigen retrieval. 3,Secondary antibody was diluted at 1:200(room temperature, 45min).

Nanjing BYabscience technology Co.,Ltd

网址: www.njbybio.com

官方热线: 025-5229-8998

监督电话: 15950492658