



Ribosomal Protein S9 Polyclonal Antibody

Catalog No	BYab-04173
Isotype	IgG
Reactivity	Human;Mouse;Rat
Applications	WB;IHC;IF;ELISA
Gene Name	RPS9
Protein Name	40S ribosomal protein S9
Immunogen	The antiserum was produced against synthesized peptide derived from human RPS9. AA range:31-80
Specificity	Ribosomal Protein S9 Polyclonal Antibody detects endogenous levels of Ribosomal Protein S9 protein.
Formulation	Liquid in PBS containing 50% glycerol, 0.5% BSA and 0.02% sodium azide.
Source	Polyclonal, Rabbit,IgG
Purification	The antibody was affinity-purified from rabbit antiserum by affinity-chromatography using epitope-specific immunogen.
Dilution	Western Blot: 1/500 - 1/2000. Immunohistochemistry: 1/100 - 1/300. Immunofluorescence: 1/200 - 1/1000. ELISA: 1/20000. Not yet tested in other applications.
Concentration	1 mg/ml
Purity	≥90%
Storage Stability	-20°C/1 year
Synonyms	RPS9; 40S ribosomal protein S9
Observed Band	23kD
Cell Pathway	Cytoplasm . Localized in cytoplasmic mRNP granules containing untranslated mRNAs.
Tissue Specificity	Brain,Colon,Muscle,Placenta,Skin,
Function	similarity:Belongs to the ribosomal protein S4P family.,similarity:Contains 1 S4 RNA-binding domain.,
Background	Ribosomes, the organelles that catalyze protein synthesis, consist of a small 40S subunit and a large 60S subunit. Together these subunits are composed of 4 RNA species and approximately 80 structurally distinct proteins. This gene encodes a ribosomal protein that is a component of the 40S subunit. The protein belongs to the S4P family of ribosomal proteins. It is located in the cytoplasm. Variable expression of this gene in colorectal cancers compared to adjacent normal tissues has been observed, although no correlation between the level of expression and

Nanjing BYabscience technology Co.,Ltd



the severity of the disease has been found. As is typical for genes encoding ribosomal proteins, multiple processed pseudogenes derived from this gene are dispersed through the genome. [provided by RefSeq, Jul 2008],

matters needing attention

Avoid repeated freezing and thawing!

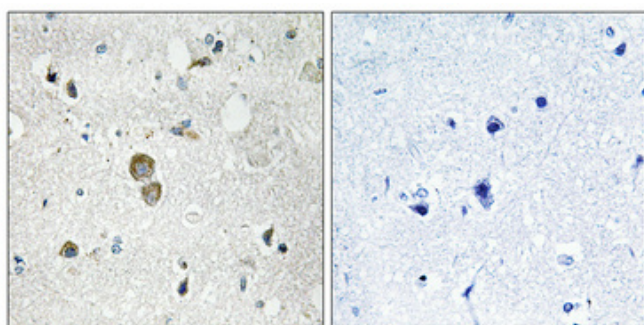
Usage suggestions

This product can be used in immunological reaction related experiments. For more information, please consult technical personnel.

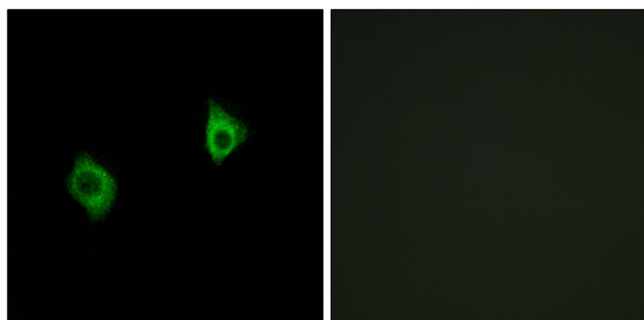
Products Images



Western Blot analysis of various cells using Ribosomal Protein S9 Polyclonal Antibody diluted at 1:500

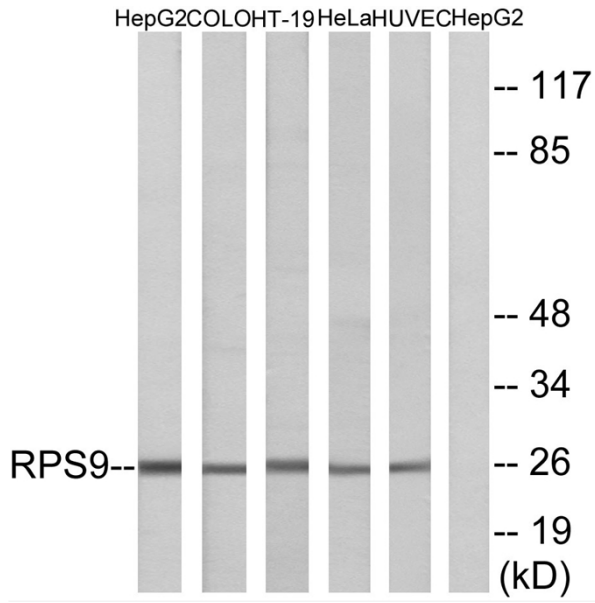


Immunohistochemical analysis of paraffin-embedded Human brain. Antibody was diluted at 1:100(4° overnight). High-pressure and temperature Tris-EDTA,pH8.0 was used for antigen retrieval. Negative contrl (right) obtained from antibody was pre-absorbed by immunogen peptide.



Immunofluorescence analysis of A549 cells, using RPS9 Antibody. The picture on the right is blocked with the synthesized peptide.

Nanjing BYabscience technology Co.,Ltd



Western blot analysis of lysates from HepG2, COLO, HT-29, HeLa, and HUVEC cells, using RPS9 Antibody. The lane on the right is blocked with the synthesized peptide.