



Ribosomal Protein S11 Polyclonal Antibody

Catalog No	BYab-04154
Isotype	IgG
Reactivity	Human;Mouse;Rat
Applications	WB;IHC;IF;ELISA
Gene Name	RPS11
Protein Name	40S ribosomal protein S11
Immunogen	The antiserum was produced against synthesized peptide derived from human RPS11. AA range:71-120
Specificity	Ribosomal Protein S11 Polyclonal Antibody detects endogenous levels of Ribosomal Protein S11 protein.
Formulation	Liquid in PBS containing 50% glycerol, 0.5% BSA and 0.02% sodium azide.
Source	Polyclonal, Rabbit,IgG
Purification	The antibody was affinity-purified from rabbit antiserum by affinity-chromatography using epitope-specific immunogen.
Dilution	WB: 1/500 - 1/2000. IHC: 1/100 - 1/300. ELISA: 1/40000.. IF 1:50-200
Concentration	1 mg/ml
Purity	≥90%
Storage Stability	-20°C/1 year
Synonyms	RPS11; 40S ribosomal protein S11
Observed Band	18kD
Cell Pathway	nucleoplasm,nucleolus,cytoplasm,cytosol,ribosome,focal adhesion,membrane,cytosolic small ribosomal subunit,extracellular matrix,extracellular exosome,
Tissue Specificity	B-cell,Eye,Lung,Placenta,Prostate,T-cell,
Function	similarity:Belongs to the ribosomal protein S17P family.,
Background	Ribosomes, the organelles that catalyze protein synthesis, consist of a small 40S subunit and a large 60S subunit. Together these subunits are composed of 4 RNA species and approximately 80 structurally distinct proteins. This gene encodes a member of the S17P family of ribosomal proteins that is a component of the 40S subunit. This gene is co-transcribed with the small nucleolar RNA gene U35B, which is located in the third intron. As is typical for genes encoding ribosomal proteins, there are multiple processed pseudogenes of this gene dispersed

Nanjing BYabscience technology Co.,Ltd



throughout the genome. [provided by RefSeq, Jul 2012],

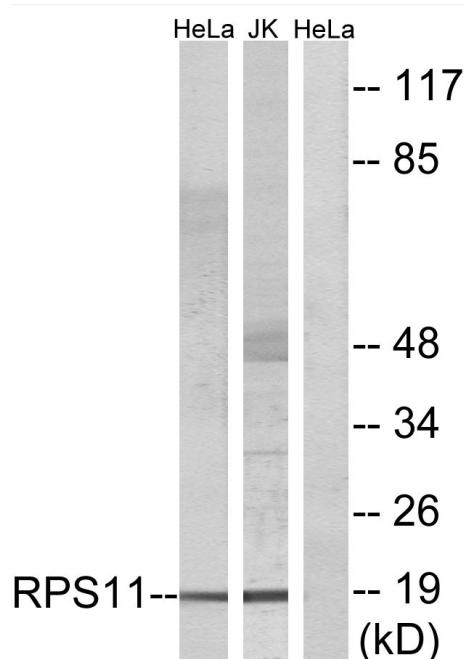
matters needing attention

Avoid repeated freezing and thawing!

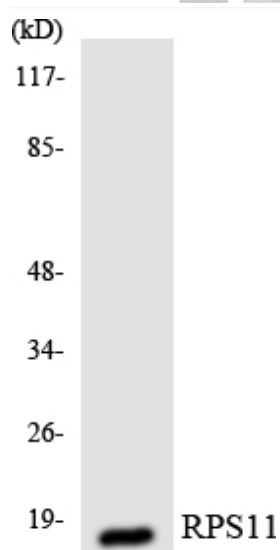
Usage suggestions

This product can be used in immunological reaction related experiments. For more information, please consult technical personnel.

Products Images



Western blot analysis of lysates from HeLa and Jurkat cells, using RPS11 Antibody. The lane on the right is blocked with the synthesized peptide.



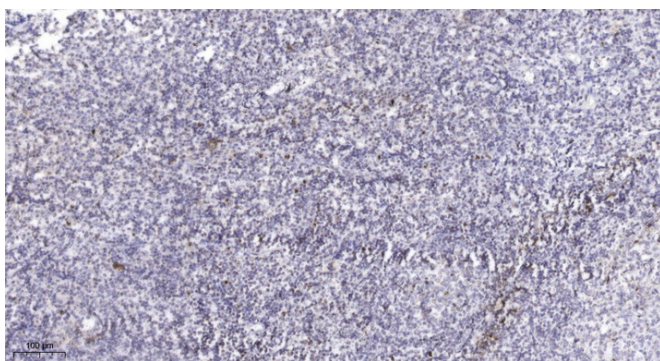
Western blot analysis of the lysates from HeLa cells using RPS11 antibody.

Nanjing BYabs science technology Co.,Ltd

网址: www.njbybio.com

官方热线: 025-5229-8998

监督电话: 15950492658



Immunohistochemical analysis of paraffin-embedded human tonsil. 1, Antibody was diluted at 1:200(4° overnight). 2, Tris-EDTA,pH9.0 was used for antigen retrieval. 3,Secondary antibody was diluted at 1:200(room temperature, 45min).