



# Ribosomal Protein L39 Polyclonal Antibody

<b>Catalog No</b>	BYab-04146
<b>Isotype</b>	IgG
<b>Reactivity</b>	Human;Mouse;Rat
<b>Applications</b>	WB;IHC;IF;ELISA
<b>Gene Name</b>	RPL39
<b>Protein Name</b>	60S ribosomal protein L39
<b>Immunogen</b>	The antiserum was produced against synthesized peptide derived from human RPL39. AA range:1-50
<b>Specificity</b>	Ribosomal Protein L39 Polyclonal Antibody detects endogenous levels of Ribosomal Protein L39 protein.
<b>Formulation</b>	Liquid in PBS containing 50% glycerol, 0.5% BSA and 0.02% sodium azide.
<b>Source</b>	Polyclonal, Rabbit,IgG
<b>Purification</b>	The antibody was affinity-purified from rabbit antiserum by affinity-chromatography using epitope-specific immunogen.
<b>Dilution</b>	Western Blot: 1/500 - 1/2000. Immunohistochemistry: 1/100 - 1/300. Immunofluorescence: 1/200 - 1/1000. ELISA: 1/40000. Not yet tested in other applications.
<b>Concentration</b>	1 mg/ml
<b>Purity</b>	≥90%
<b>Storage Stability</b>	-20°C/1 year
<b>Synonyms</b>	RPL39; 60S ribosomal protein L39
<b>Observed Band</b>	6kD
<b>Cell Pathway</b>	extracellular space,cytosol,cytosolic large ribosomal subunit,
<b>Tissue Specificity</b>	Colon,Eye,Heart,
<b>Function</b>	miscellaneous:This protein is the smallest and one of the most basic of the proteins in liver ribosomes.,similarity:Belongs to the ribosomal protein L39e family.,
<b>Background</b>	Ribosomes, the organelles that catalyze protein synthesis, consist of a small 40S subunit and a large 60S subunit. Together these subunits are composed of 4 RNA species and approximately 80 structurally distinct proteins. This gene encodes a ribosomal protein that is a component of the 60S subunit. The protein belongs to the S39E family of ribosomal proteins. It is located in the cytoplasm. In rat, the protein is the smallest, and one of the most basic, proteins of the ribosome. This

**Nanjing BYabscience technology Co.,Ltd**



gene is co-transcribed with the U69 small nucleolar RNA gene, which is located in its second intron. As is typical for genes encoding ribosomal proteins, there are multiple processed pseudogenes of this gene dispersed through the genome. [provided by RefSeq, Jul 2008],

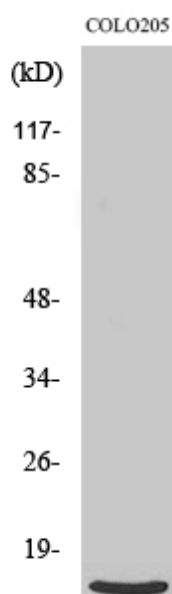
**matters needing attention**

Avoid repeated freezing and thawing!

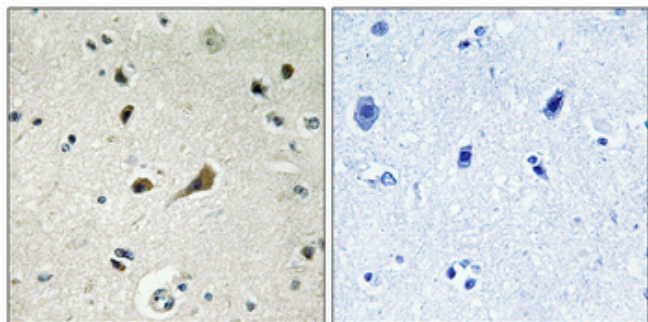
**Usage suggestions**

This product can be used in immunological reaction related experiments. For more information, please consult technical personnel.

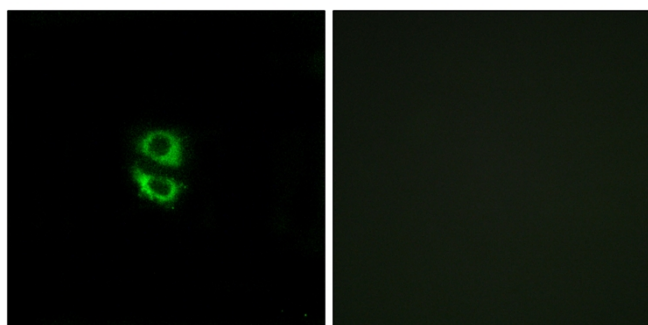
## Products Images



Western Blot analysis of various cells using Ribosomal Protein L39 Polyclonal Antibody

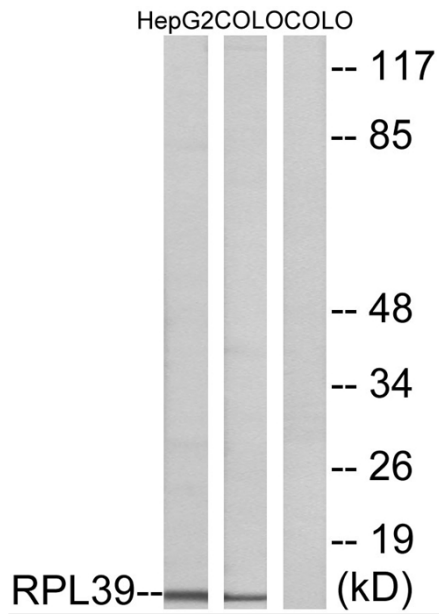


Immunohistochemical analysis of paraffin-embedded Human brain. Antibody was diluted at 1:100(4° overnight). High-pressure and temperature Tris-EDTA,pH8.0 was used for antigen retrieval. Negative contrl (right) obtained from antibody was pre-absorbed by immunogen peptide.



Immunofluorescence analysis of A549 cells, using RPL39 Antibody. The picture on the right is blocked with the synthesized peptide.

**Nanjing BYabs science technology Co.,Ltd**



Western blot analysis of lysates from COLO and HepG2 cells, using RPL39 Antibody. The lane on the right is blocked with the synthesized peptide.