



# PPP1R14D Polyclonal Antibody

<b>Catalog No</b>	BYab-04097
<b>Isotype</b>	IgG
<b>Reactivity</b>	Human;Rat;Mouse;
<b>Applications</b>	WB;IHC;IF;ELISA
<b>Gene Name</b>	PPP1R14D
<b>Protein Name</b>	Protein phosphatase 1 regulatory subunit 14D
<b>Immunogen</b>	The antiserum was produced against synthesized peptide derived from human PPP1R14D. AA range:66-115
<b>Specificity</b>	PPP1R14D Polyclonal Antibody detects endogenous levels of PPP1R14D protein.
<b>Formulation</b>	Liquid in PBS containing 50% glycerol, 0.5% BSA and 0.02% sodium azide.
<b>Source</b>	Polyclonal, Rabbit,IgG
<b>Purification</b>	The antibody was affinity-purified from rabbit antiserum by affinity-chromatography using epitope-specific immunogen.
<b>Dilution</b>	WB: 1/500 - 1/2000. IHC: 1/100 - 1/300. ELISA: 1/5000.. IF 1:50-200
<b>Concentration</b>	1 mg/ml
<b>Purity</b>	≥90%
<b>Storage Stability</b>	-20°C/1 year
<b>Synonyms</b>	PPP1R14D; GBPI; Protein phosphatase 1 regulatory subunit 14D; Gastrointestinal and brain-specific PP1-inhibitory protein 1; GBPI-1
<b>Observed Band</b>	24kD
<b>Cell Pathway</b>	Cytoplasm .
<b>Tissue Specificity</b>	Detected in colon, intestine, kidney and brain cortex.
<b>Function</b>	function:Inhibitor of PPP1CA. Has inhibitory activity only when phosphorylated, creating a molecular switch for regulating the phosphorylation status of PPP1CA substrates and smooth muscle contraction.,PTM:Phosphorylated on several residues.,similarity:Belongs to the PP1 inhibitor family.,tissue specificity:Detected in colon, intestine, kidney and brain cortex.,
<b>Background</b>	Protein phosphatase-1 (PP1; see MIM 176875) is a major cellular phosphatase that reverses serine/threonine protein phosphorylation. PPP1R14D is a PP1 inhibitor that itself is regulated by phosphorylation (Liu et al., 2004 [PubMed 12974676]).[supplied by OMIM, Feb 2010],

**Nanjing BYabscience technology Co.,Ltd**



**matters needing attention**

Avoid repeated freezing and thawing!

**Usage suggestions**

This product can be used in immunological reaction related experiments. For more information, please consult technical personnel.

Nanjing BYabscience technology Co.,Ltd

网址: [www.njbybio.com](http://www.njbybio.com)

官方热线: 025-5229-8998

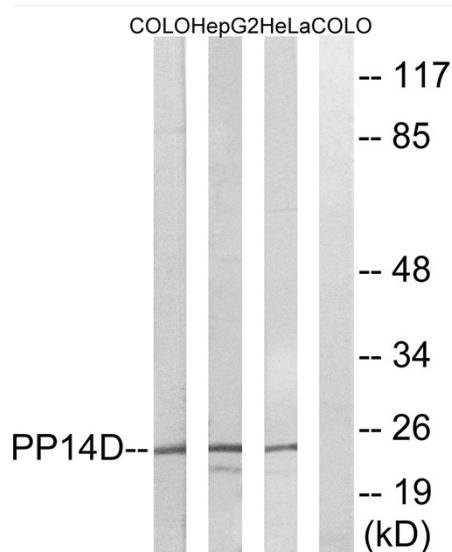
监督电话: 15950492658



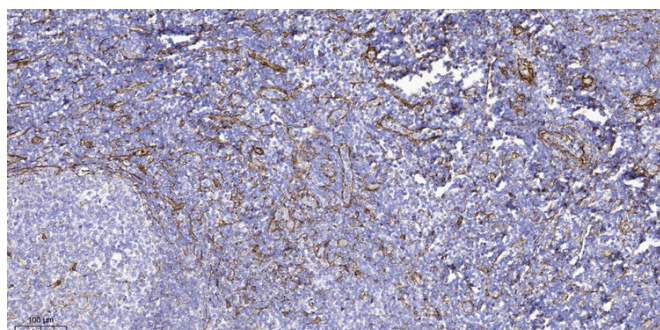
## Products Images



Western Blot analysis of various cells using PPP1R14D Polyclonal Antibody



Western blot analysis of lysates from HeLa, HepG2, and COLO cells, using PPP1R14D Antibody. The lane on the right is blocked with the synthesized peptide.



Immunohistochemical analysis of paraffin-embedded human tonsil. 1, Tris-EDTA, pH 9.0 was used for antigen retrieval. 2 Antibody was diluted at 1:200 (4° overnight). 3, Secondary antibody was diluted at 1:200 (room temperature, 45 min).

Nanjing BYabs science technology Co., Ltd

网址: [www.njbybio.com](http://www.njbybio.com)

官方热线: 025-5229-8998

监督电话: 15950492658