



PKI β Polyclonal Antibody

Catalog No	BYab-04093
Isotype	IgG
Reactivity	Human;Mouse;Rat
Applications	WB;IHC;IF;ELISA
Gene Name	PKIB
Protein Name	cAMP-dependent protein kinase inhibitor beta
Immunogen	The antiserum was produced against synthesized peptide derived from human IPKB. AA range:29-78
Specificity	PKI β Polyclonal Antibody detects endogenous levels of PKI β protein.
Formulation	Liquid in PBS containing 50% glycerol, 0.5% BSA and 0.02% sodium azide.
Source	Polyclonal, Rabbit,IgG
Purification	The antibody was affinity-purified from rabbit antiserum by affinity-chromatography using epitope-specific immunogen.
Dilution	Immunohistochemistry: 1/100 - 1/300. Immunofluorescence: 1/200 - 1/1000. ELISA: 1/5000, WB 1:500-2000
Concentration	1 mg/ml
Purity	$\geq 90\%$
Storage Stability	-20°C/1 year
Synonyms	PKIB; PRKACN2; cAMP-dependent protein kinase inhibitor beta; PKI-beta
Observed Band	
Cell Pathway	nucleus,cytoplasm,
Tissue Specificity	Placenta,
Function	function:Extremely potent competitive inhibitor of cAMP-dependent protein kinase activity, this protein interacts with the catalytic subunit of the enzyme after the cAMP-induced dissociation of its regulatory chains.,similarity:Belongs to the PKI family.,
Background	protein kinase (cAMP-dependent, catalytic) inhibitor beta(PKIB) Homo sapiens This gene encodes a member of the cAMP-dependent protein kinase inhibitor family. The encoded protein may play a role in the protein kinase A (PKA) pathway by interacting with the catalytic subunit of PKA, and overexpression of this gene may play a role in prostate cancer. Alternatively spliced transcript variants encoding multiple isoforms have been observed for this gene. [provided

Nanjing BYabscience technology Co.,Ltd



by RefSeq, Jul 2012],

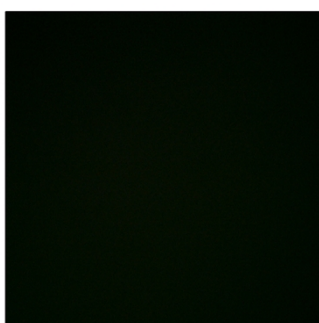
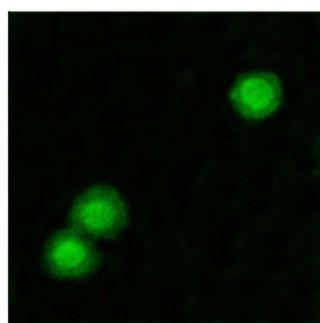
matters needing attention

Avoid repeated freezing and thawing!

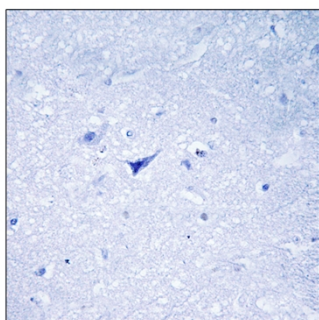
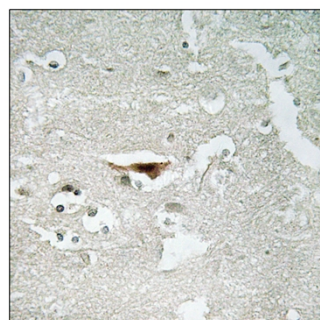
Usage suggestions

This product can be used in immunological reaction related experiments. For more information, please consult technical personnel.

Products Images



Immunofluorescence analysis of MCF7 cells, using IPKB Antibody. The picture on the right is blocked with the synthesized peptide.



Immunohistochemistry analysis of paraffin-embedded human brain tissue, using IPKB Antibody. The picture on the right is blocked with the synthesized peptide.

Nanjing BYabscience technology Co.,Ltd

网址: www.njbybio.com

官方热线: 025-5229-8998

监督电话: 15950492658