



Pki α Polyclonal Antibody

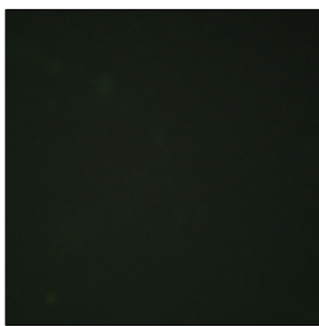
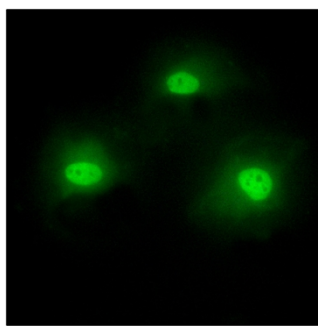
Catalog No	BYab-04092
Isotype	IgG
Reactivity	Human;Mouse;Rat
Applications	IHC;IF;ELISA
Gene Name	PKIA
Protein Name	cAMP-dependent protein kinase inhibitor alpha
Immunogen	The antiserum was produced against synthesized peptide derived from human IPKA. AA range:10-59
Specificity	Pki α Polyclonal Antibody detects endogenous levels of Pki α protein.
Formulation	Liquid in PBS containing 50% glycerol, 0.5% BSA and 0.02% sodium azide.
Source	Polyclonal, Rabbit,IgG
Purification	The antibody was affinity-purified from rabbit antiserum by affinity-chromatography using epitope-specific immunogen.
Dilution	Immunohistochemistry: 1/100 - 1/300. Immunofluorescence: 1/200 - 1/1000. ELISA: 1/20000. Not yet tested in other applications.
Concentration	1 mg/ml
Purity	$\geq 90\%$
Storage Stability	-20°C/1 year
Synonyms	PKIA; PRKACN1; cAMP-dependent protein kinase inhibitor alpha; PKI-alpha; cAMP-dependent protein kinase inhibitor; muscle/brain isoform
Observed Band	
Cell Pathway	nucleus,cytoplasm,
Tissue Specificity	Skeletal muscle,
Function	function:Extremely potent competitive inhibitor of cAMP-dependent protein kinase activity, this protein interacts with the catalytic subunit of the enzyme after the cAMP-induced dissociation of its regulatory chains.,miscellaneous:The inhibitory site contains regions very similar to the hinge regions (sites that directly interact with the enzyme active site) and "pseudosubstrate site" of the regulatory chains; but, unlike these chains, PKI does not contain cAMP-binding sites. The arginine residues within the inhibitory site are essential for inhibition and recognition of the enzyme active site.,similarity:Belongs to the PKI family.,

Nanjing BYabscience technology Co.,Ltd

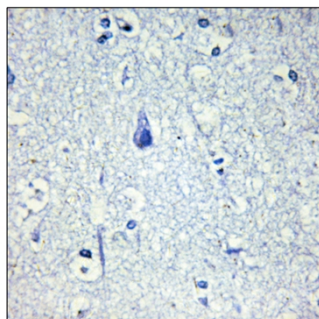
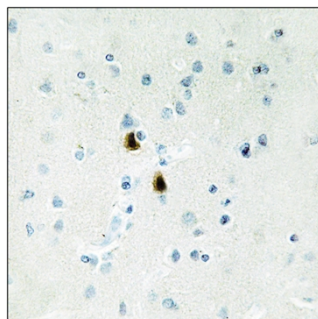


Background	The protein encoded by this gene is a member of the cAMP-dependent protein kinase (PKA) inhibitor family. This protein was demonstrated to interact with and inhibit the activities of both C alpha and C beta catalytic subunits of the PKA. Alternatively spliced transcript variants encoding the same protein have been reported. [provided by RefSeq, Jul 2008],
matters needing attention	Avoid repeated freezing and thawing!
Usage suggestions	This product can be used in immunological reaction related experiments. For more information, please consult technical personnel.

Products Images



Immunofluorescence analysis of HeLa cells, using IPKA Antibody. The picture on the right is blocked with the synthesized peptide.



Immunohistochemistry analysis of paraffin-embedded human brain tissue, using IPKA Antibody. The picture on the right is blocked with the synthesized peptide.