



PITPβ Polyclonal Antibody

| | |
|---------------------------|---|
| Catalog No | BYab-04091 |
| Isotype | IgG |
| Reactivity | Human;Mouse;Rat |
| Applications | WB;ELISA;IHC |
| Gene Name | PITPNB |
| Protein Name | Phosphatidylinositol transfer protein beta isoform |
| Immunogen | The antiserum was produced against synthesized peptide derived from human PITPNB. AA range:20-69 |
| Specificity | PITPβ Polyclonal Antibody detects endogenous levels of PITPβ protein. |
| Formulation | Liquid in PBS containing 50% glycerol, 0.5% BSA and 0.02% sodium azide. |
| Source | Polyclonal, Rabbit,IgG |
| Purification | The antibody was affinity-purified from rabbit antiserum by affinity-chromatography using epitope-specific immunogen. |
| Dilution | WB 1:500-2000;IHC-p 1:50-300; ELISA 2000-20000 |
| Concentration | 1 mg/ml |
| Purity | ≥90% |
| Storage Stability | -20°C/1 year |
| Synonyms | PITPNB; Phosphatidylinositol transfer protein beta isoform; PI-TP-beta; PtdIns transfer protein beta; PtdInsTP beta |
| Observed Band | 32kD |
| Cell Pathway | Golgi apparatus . Golgi apparatus membrane . Endoplasmic reticulum membrane . |
| Tissue Specificity | Widely expressed in various tissues including brain. |
| Function | function:Catalyzes the transfer of PtdIns and phosphatidylcholine between membranes.,PTM:Constitutive phosphorylation of Ser-262 has no effect on phospholipid transfer activity but is required for Golgi targeting.,similarity:Belongs to the PtdIns transfer protein family. Class I subfamily.,tissue specificity:Widely expressed in various tissues including brain., |
| Background | This gene encodes a cytoplasmic protein that catalyzes the transfer of phosphatidylinositol and phosphatidylcholine between membranes. This transfer activity is required for COPI complex-mediated retrograde transport from the Golgi apparatus to the endoplasmic reticulum. Alternative splicing of this gene results in |

Nanjing BYabscience technology Co.,Ltd



multiple transcript variants. [provided by RefSeq, Sep 2013],

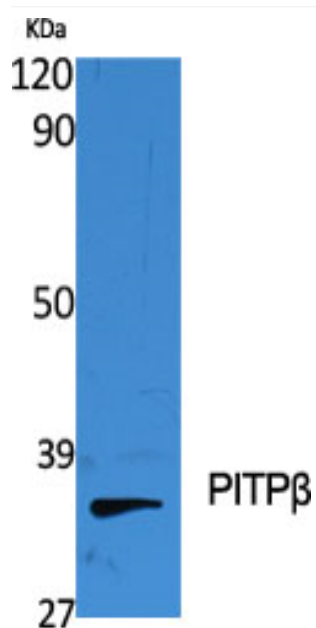
matters needing attention

Avoid repeated freezing and thawing!

Usage suggestions

This product can be used in immunological reaction related experiments. For more information, please consult technical personnel.

Products Images



Western Blot analysis of various cells using PITPβ Polyclonal Antibody diluted at 1:2000



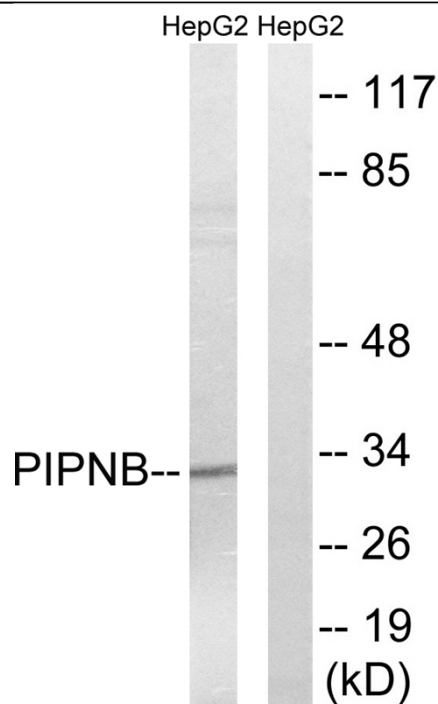
Western Blot analysis of HepG2 cells using PITPβ Polyclonal Antibody diluted at 1:2000

Nanjing BYabscience technology Co.,Ltd

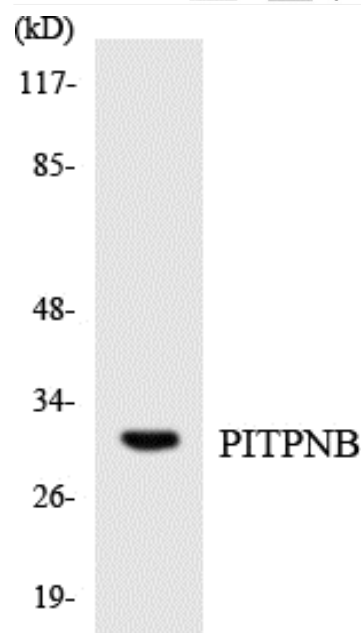
网址: www.njbybio.com

官方热线: 025-5229-8998

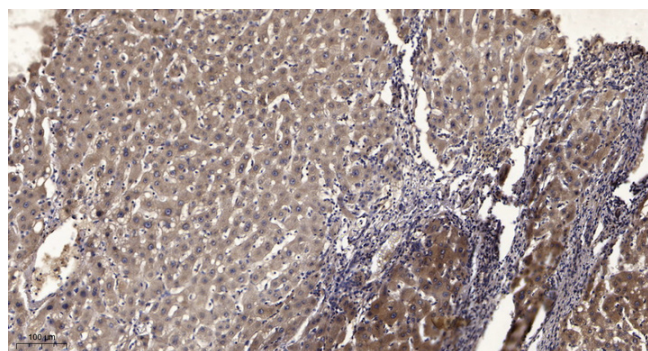
监督电话: 15950492658



Western blot analysis of lysates from HepG2 cells, using PITPNB Antibody. The lane on the right is blocked with the synthesized peptide.



Western blot analysis of the lysates from K562 cells using PITPNB antibody.



Immunohistochemical analysis of paraffin-embedded human liver cancer. 1, Antibody was diluted at 1:200(4° overnight). 2, Tris-EDTA, pH9.0 was used for antigen retrieval. 3, Secondary antibody was diluted at 1:200(room temperature, 45min).