



PHAPI2 Polyclonal Antibody

Catalog No	BYab-04077
Isotype	IgG
Reactivity	Human;Mouse;Rat
Applications	WB;ELISA;IHC
Gene Name	ANP32B
Protein Name	Acidic leucine-rich nuclear phosphoprotein 32 family member B
Immunogen	The antiserum was produced against synthesized peptide derived from human ANP32B. AA range:1-50
Specificity	PHAPI2 Polyclonal Antibody detects endogenous levels of PHAPI2 protein.
Formulation	Liquid in PBS containing 50% glycerol, 0.5% BSA and 0.02% sodium azide.
Source	Polyclonal, Rabbit,IgG
Purification	The antibody was affinity-purified from rabbit antiserum by affinity-chromatography using epitope-specific immunogen.
Dilution	WB 1:500-2000;IHC-p 1:50-300; ELISA 2000-20000
Concentration	1 mg/ml
Purity	≥90%
Storage Stability	-20°C/1 year
Synonyms	ANP32B; APRIL; PHAPI2; Acidic leucine-rich nuclear phosphoprotein 32 family member B; Acidic protein rich in leucines; Putative HLA-DR-associated protein I-2; PHAPI2; Silver-stainable protein SSP29
Observed Band	29kD
Cell Pathway	[Isoform 1]: Nucleus . Cytoplasm . Accumulates in the nuclei at the S phase. . ; [Isoform 2]: Cytoplasm. Lacks a nuclear localization signal.
Tissue Specificity	Expressed in heart, lung, pancreas, prostate and in spleen, thymus and placenta.
Function	function:Multifunctional protein working as a cell cycle progression factor as well as a cell survival factor. Required for the progression from the G1 to the S phase. Anti-apoptotic protein which functions as a caspase-3 inhibitor. Has no phosphatase 2A (PP2A) inhibitor activity.,similarity:Belongs to the ANP32 family.,similarity:Contains 4 LRR (leucine-rich) repeats.,subcellular location:Accumulates in the nuclei at the S phase.,tissue specificity:Expressed in heart, lung, pancreas, prostate and in spleen, thymus and placenta.,

Nanjing BYabscience technology Co.,Ltd

网址: www.njbybio.com

官方热线: 025-5229-8998

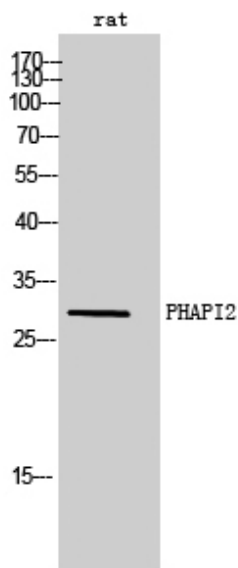
监督电话: 15950492658



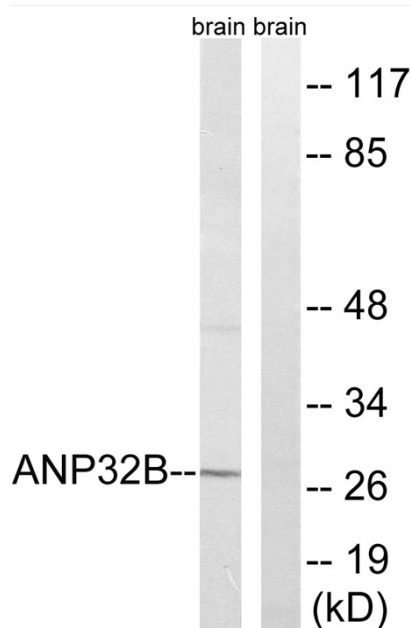
Background	function:Multifunctional protein working as a cell cycle progression factor as well as a cell survival factor. Required for the progression from the G1 to the S phase. Anti-apoptotic protein which functions as a caspase-3 inhibitor. Has no phosphatase 2A (PP2A) inhibitor activity.,similarity:Belongs to the ANP32 family.,similarity:Contains 4 LRR (leucine-rich) repeats.,subcellular location:Accumulates in the nuclei at the S phase.,tissue specificity:Expressed in heart, lung, pancreas, prostate and in spleen, thymus and placenta.,
matters needing attention	Avoid repeated freezing and thawing!
Usage suggestions	This product can be used in immunological reaction related experiments. For more information, please consult technical personnel.



Products Images



Western Blot analysis of rat cells using PHAPI2 Polyclonal Antibody cells nucleus extracted by Minute TM Cytoplasmic and Nuclear Fractionation kit (SC-003, Invent biotech, MN, USA).



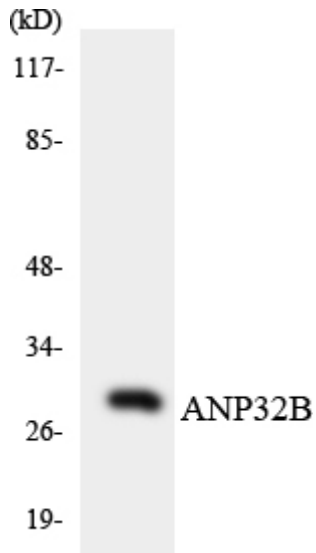
Western blot analysis of lysates from rat brain cells, using ANP32B Antibody. The lane on the right is blocked with the synthesized peptide.

Nanjing BYabs science technology Co.,Ltd

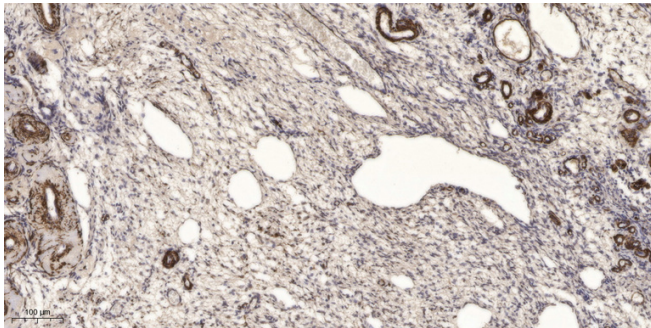
网址: www.njbybio.com

官方热线: 025-5229-8998

监督电话: 15950492658



Western blot analysis of the lysates from HeLa cells using ANP32B antibody.



Immunohistochemical analysis of paraffin-embedded human oophoroma. 1, Antibody was diluted at 1:200(4° overnight). 2, Tris-EDTA,pH9.0 was used for antigen retrieval. 3,Secondary antibody was diluted at 1:200(room temperature, 45min).