



# PEDF Polyclonal Antibody

<b>Catalog No</b>	BYab-04064
<b>Isotype</b>	IgG
<b>Reactivity</b>	Human;Mouse;Rat
<b>Applications</b>	IHC;IF;WB;ELISA
<b>Gene Name</b>	SERPINF1
<b>Protein Name</b>	Pigment epithelium-derived factor
<b>Immunogen</b>	The antiserum was produced against synthesized peptide derived from human PEDF. AA range:258-307
<b>Specificity</b>	PEDF Polyclonal Antibody detects endogenous levels of PEDF protein.
<b>Formulation</b>	Liquid in PBS containing 50% glycerol, 0.5% BSA and 0.02% sodium azide.
<b>Source</b>	Polyclonal, Rabbit,IgG
<b>Purification</b>	The antibody was affinity-purified from rabbit antiserum by affinity-chromatography using epitope-specific immunogen.
<b>Dilution</b>	Western Blot: 1/500 - 1/2000. IHC-p: 1:100-300 ELISA: 1/20000. IF 1:100-300 Not yet tested in other applications.
<b>Concentration</b>	1 mg/ml
<b>Purity</b>	≥90%
<b>Storage Stability</b>	-20°C/1 year
<b>Synonyms</b>	SERPINF1; PEDF; PIG35; Pigment epithelium-derived factor; PEDF; Cell proliferation-inducing gene 35 protein; EPC-1; Serpin F1
<b>Observed Band</b>	46kD
<b>Cell Pathway</b>	Secreted . Melanosome . Enriched in stage I melanosomes.
<b>Tissue Specificity</b>	Retinal pigment epithelial cells and blood plasma.
<b>Function</b>	developmental stage:Expressed in quiescent cells.,domain:The N-terminal (AA 44-121) exhibits neurite outgrowth-inducing activity. The C-terminal exposed loop (AA 382-418) is essential for serpin activity.,function:Neurotrophic protein; induces extensive neuronal differentiation in retinoblastoma cells. Potent inhibitor of angiogenesis. As it does not undergo the S (stressed) to R (relaxed) conformational transition characteristic of active serpins, it exhibits no serine protease inhibitory activity.,PTM:The N-terminus is blocked. Extracellular phosphorylation enhances antiangiogenic activity.,similarity:Belongs to the serpin family.,subcellular location:Enriched in stage I melanosomes.,tissue specificity:Retinal pigment epithelial cells and blood plasma.,

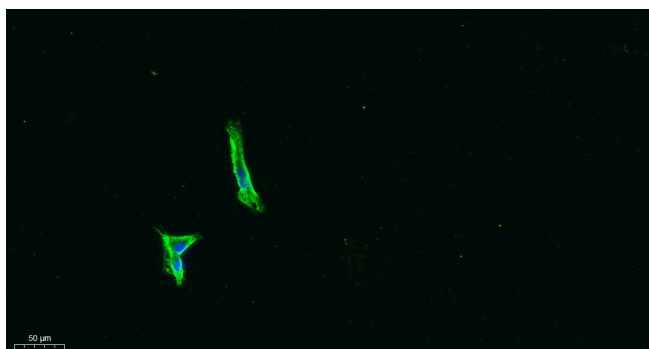
**Nanjing BYabscience technology Co.,Ltd**



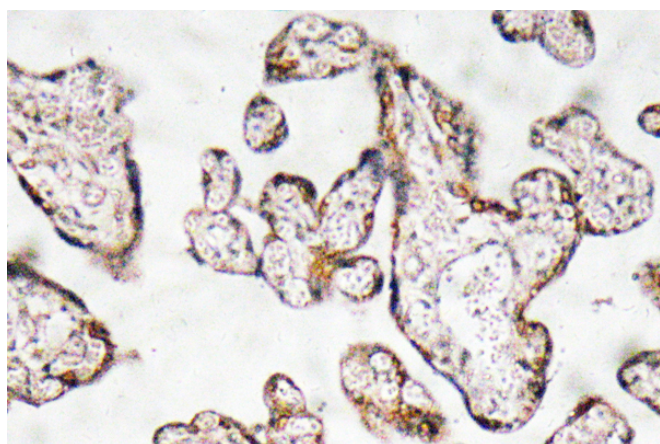
Background	This gene encodes a member of the serpin family that does not display the serine protease inhibitory activity shown by many of the other serpin proteins. The encoded protein is secreted and strongly inhibits angiogenesis. In addition, this protein is a neurotrophic factor involved in neuronal differentiation in retinoblastoma cells. Mutations in this gene were found in individuals with osteogenesis imperfecta, type VI. [provided by RefSeq, Aug 2016],
matters needing attention	Avoid repeated freezing and thawing!
Usage suggestions	This product can be used in immunological reaction related experiments. For more information, please consult technical personnel.



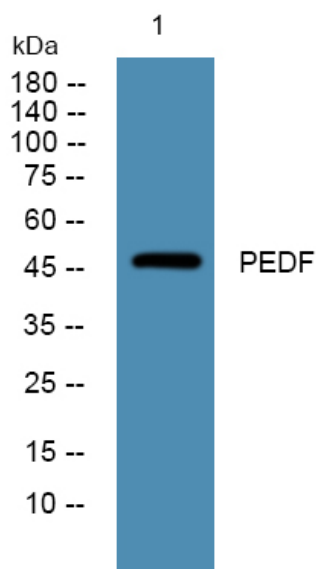
## Products Images



Immunofluorescence analysis of A549. 1, primary Antibody was diluted at 1:200 (4°C overnight). 2, Goat Anti Rabbit IgG (H&L) - Alexa Fluor 488 Secondary antibody was diluted at 1:1000 (room temperature, 50 min). 3, Picture B: DAPI (blue) 10 min.



Immunohistochemistry analysis of PEDF antibody in paraffin-embedded human prostate carcinoma tissue.



Western blot analysis of lysates from A431 cells, primary antibody was diluted at 1:1000, 4°C over night

Nanjing BYabs science technology Co., Ltd

网址: [www.njbybio.com](http://www.njbybio.com)

官方热线: 025-5229-8998

监督电话: 15950492658