



# OPN Polyclonal Antibody

Catalog No	BYab-04050
Isotype	IgG
Reactivity	Human;Mouse;Rat
Applications	WB;IHC;IF;ELISA
Gene Name	SPP1
Protein Name	Osteopontin
Immunogen	The antiserum was produced against synthesized peptide derived from human Osteopontin. AA range:261-310
Specificity	OPN Polyclonal Antibody detects endogenous levels of OPN protein.
Formulation	Liquid in PBS containing 50% glycerol, 0.5% BSA and 0.02% sodium azide.
Source	Polyclonal, Rabbit,IgG
Purification	The antibody was affinity-purified from rabbit antiserum by affinity-chromatography using epitope-specific immunogen.
Dilution	WB 1:500-2000;IHC-p 1:100-500;IF/ICC 1:100-500;ELISA 1:5000-20000
Concentration	1 mg/ml
Purity	≥90%
Storage Stability	-20°C/1 year
Synonyms	SPP1; BNSP; OPN; PSEC0156; Osteopontin; Bone sialoprotein 1; Nephropontin; Secreted phosphoprotein 1; SPP-1; Urinary stone protein; Uropontin
Observed Band	60kD
Cell Pathway	Secreted.
Tissue Specificity	Bone. Found in plasma.
Function	disease:This protein plays a principal role in urinary stone formation as the stone matrix.,function:Acts as a cytokine involved in enhancing production of interferon-gamma and interleukin-12 and reducing production of interleukin-10 and is essential in the pathway that leads to type I immunity.,function:Binds tightly to hydroxyapatite. Appears to form an integral part of the mineralized matrix. Probably important to cell-matrix interaction.,online information:Osteopontin entry,PTM:Extensively phosphorylated on clustered serine residues.,PTM:N- and O-glycosylated.,similarity:Belongs to the osteopontin family.,subunit:Ligand for integrin alpha-V/beta-3.,

Nanjing BYabscience technology Co.,Ltd



## Background

secreted phosphoprotein 1(SPP1) Homo sapiens The protein encoded by this gene is involved in the attachment of osteoclasts to the mineralized bone matrix. The encoded protein is secreted and binds hydroxyapatite with high affinity. The osteoclast vitronectin receptor is found in the cell membrane and may be involved in the binding to this protein. This protein is also a cytokine that upregulates expression of interferon-gamma and interleukin-12. Several transcript variants encoding different isoforms have been found for this gene. [provided by RefSeq, Oct 2011],

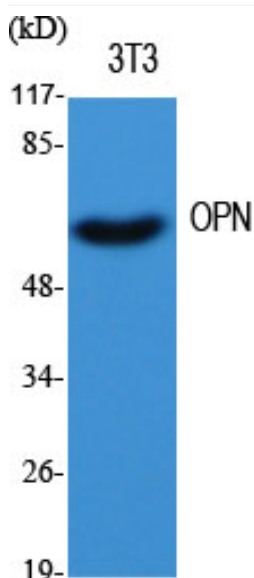
## matters needing attention

Avoid repeated freezing and thawing!

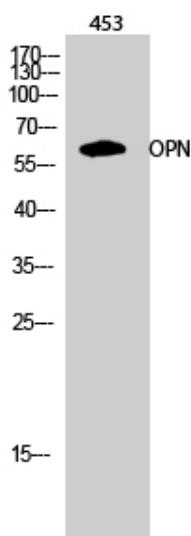
## Usage suggestions

This product can be used in immunological reaction related experiments. For more information, please consult technical personnel.

## Products Images



Western Blot analysis of various cells using OPN Polyclonal Antibody diluted at 1:500



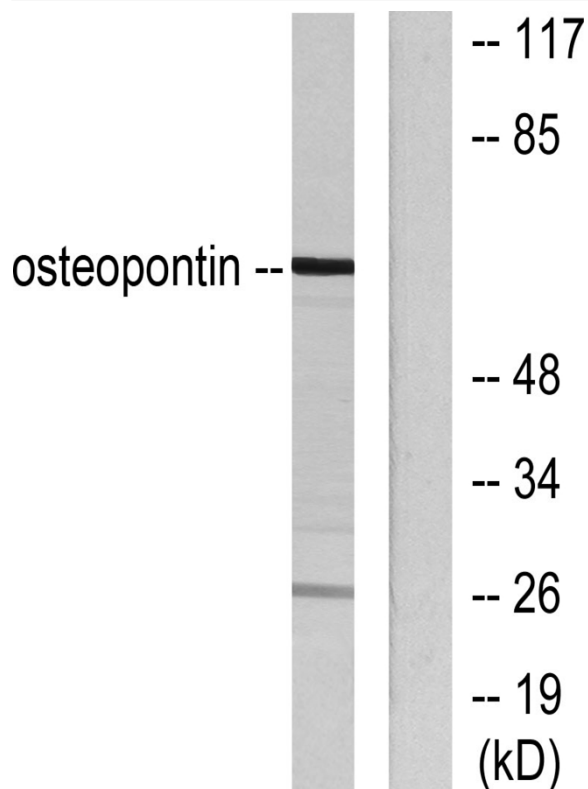
Western Blot analysis of 453 cells using OPN Polyclonal Antibody diluted at 1:500

**Nanjing BYabscience technology Co.,Ltd**

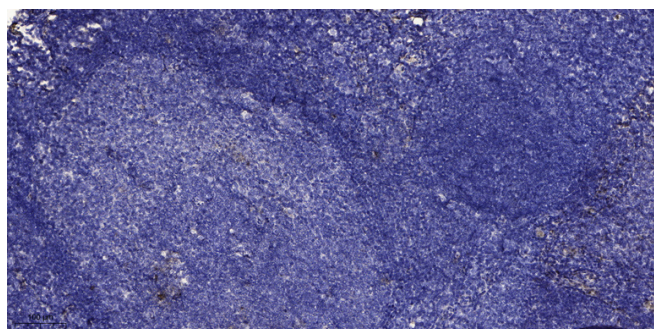
网址: [www.njbybio.com](http://www.njbybio.com)

官方热线: 025-5229-8998

监督电话: 15950492658



Western blot analysis of lysates from LOVO cells, using Osteopontin Antibody. The lane on the right is blocked with the synthesized peptide.



Immunohistochemical analysis of paraffin-embedded human tonsil. 1, Antibody was diluted at 1:200(4° overnight). 2, Tris-EDTA,pH9.0 was used for antigen retrieval. 3,Secondary antibody was diluted at 1:200(room temperature, 30min).