



Nephrocystin-5 Polyclonal Antibody

Catalog No	BYab-04037
Isotype	IgG
Reactivity	Human;Rat;Mouse;
Applications	WB;IHC;IF;ELISA
Gene Name	IQCB1
Protein Name	IQ calmodulin-binding motif-containing protein 1
Immunogen	The antiserum was produced against synthesized peptide derived from human IQCB1. AA range:431-480
Specificity	Nephrocystin-5 Polyclonal Antibody detects endogenous levels of Nephrocystin-5 protein.
Formulation	Liquid in PBS containing 50% glycerol, 0.5% BSA and 0.02% sodium azide.
Source	Polyclonal, Rabbit,IgG
Purification	The antibody was affinity-purified from rabbit antiserum by affinity-chromatography using epitope-specific immunogen.
Dilution	WB: 1/500 - 1/2000. IHC: 1/100 - 1/300. ELISA: 1/40000.. IF 1:50-200
Concentration	1 mg/ml
Purity	≥90%
Storage Stability	-20°C/1 year
Synonyms	IQCB1; KIAA0036; NPHP5; OK/SW-cl.85; IQ calmodulin-binding motif-containing protein 1; Nephrocystin-5; p53 and DNA damage-regulated IQ motif protein; PIQ
Observed Band	69kD
Cell Pathway	Cytoplasm, cytoskeleton, microtubule organizing center, centrosome . Cytoplasm, cytoskeleton, microtubule organizing center, centrosome, centriole . Localization to the centrosome depends on the interaction with CEP290/NPHP6.
Tissue Specificity	Ubiquitously expressed in fetal and adult tissues. Localized to the outer segments and connecting cilia of photoreceptor cells. Up-regulated in a number of primary colorectal and gastric tumors.
Function	disease:Defects in IQCB1 are the cause of Senior-Loken syndrome type 5 (SLSN5) [MIM:609254]. SLSN is a renal-retinal disorder, characterized by progressive wasting of the filtering unit of the kidney (nephronophthisis), with or without medullary cystic renal disease, and progressive eye disease. Typically this disorder becomes apparent during the first year of life.,similarity:Contains 4 IQ domains.,subunit:Interacts with calmodulin.,tissue specificity:Ubiquitously expressed in fetal and adult tissues. Localized to the outer segments and connecting cilia of photoreceptor cells.,

Nanjing BYabscience technology Co.,Ltd

**Background**

This gene encodes a nephrocystin protein that interacts with calmodulin and the retinitis pigmentosa GTPase regulator protein. The encoded protein has a central coiled-coil region and two calmodulin-binding IQ domains. It is localized to the primary cilia of renal epithelial cells and connecting cilia of photoreceptor cells. The protein is thought to play a role in ciliary function. Defects in this gene result in Senior-Loken syndrome type 5. Alternative splicing results in multiple transcript variants. A pseudogene of this gene is found on chromosome 6. [provided by RefSeq, Jan 2016],

matters needing attention

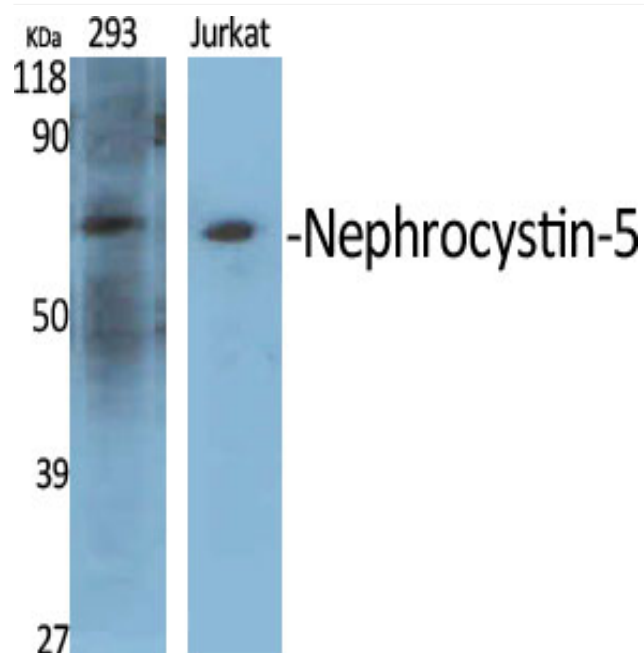
Avoid repeated freezing and thawing!

Usage suggestions

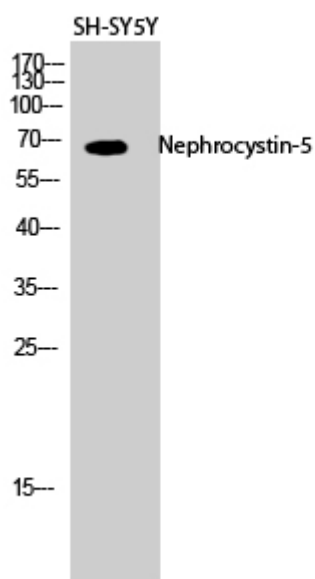
This product can be used in immunological reaction related experiments. For more information, please consult technical personnel.



Products Images



Western Blot analysis of various cells using
Nephrocystin-5 Polyclonal Antibody diluted at 1:500



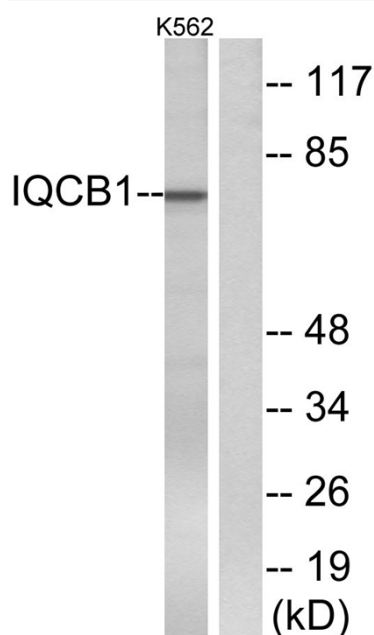
Western Blot analysis of SH-SY5Y cells using
Nephrocystin-5 Polyclonal Antibody diluted at 1:500

Nanjing BYabs science technology Co.,Ltd

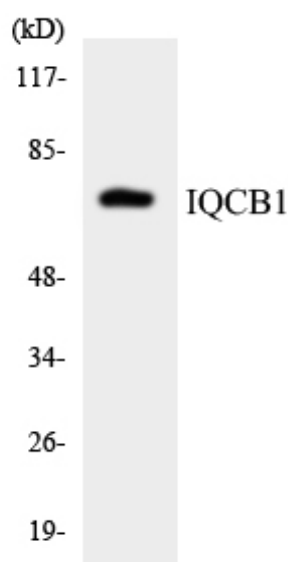
网址: www.njbybio.com

官方热线: 025-5229-8998

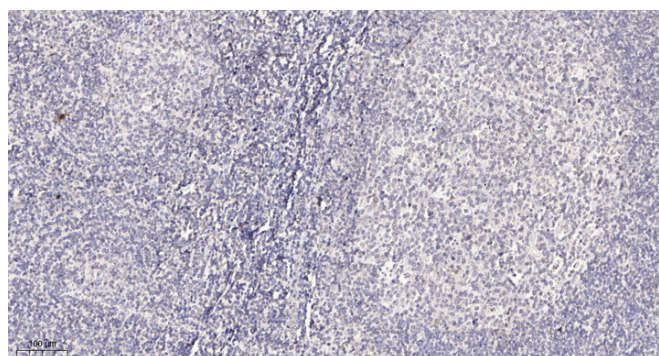
监督电话: 15950492658



Western blot analysis of lysates from K562 cells, using IQCB1 Antibody. The lane on the right is blocked with the synthesized peptide.



Western blot analysis of the lysates from HepG2 cells using IQCB1 antibody.



Immunohistochemical analysis of paraffin-embedded human tonsil. 1, Antibody was diluted at 1:200(4° overnight). 2, Tris-EDTA,pH9.0 was used for antigen retrieval. 3,Secondary antibody was diluted at 1:200(room temperature, 30min).