



NACAD Polyclonal Antibody

Catalog No	BYab-04028
Isotype	IgG
Reactivity	Human;Rat;Mouse;
Applications	WB;IHC
Gene Name	NACAD
Protein Name	NAC-alpha domain-containing protein 1
Immunogen	The antiserum was produced against synthesized peptide derived from human NACAD. AA range:376-425
Specificity	NACAD Polyclonal Antibody detects endogenous levels of NACAD protein.
Formulation	Liquid in PBS containing 50% glycerol, 0.5% BSA and 0.02% sodium azide.
Source	Polyclonal, Rabbit,IgG
Purification	The antibody was affinity-purified from rabbit antiserum by affinity-chromatography using epitope-specific immunogen.
Dilution	WB 1:500-2000;IHC-p 1:50-300
Concentration	1 mg/ml
Purity	≥90%
Storage Stability	-20°C/1 year
Synonyms	NACAD; KIAA0363; NAC-alpha domain-containing protein 1
Observed Band	140kD
Cell Pathway	Cytoplasm . Nucleus .
Tissue Specificity	Brain,
Function	function:May prevent inappropriate targeting of non-secretory polypeptides to the endoplasmic reticulum (ER). May bind to nascent polypeptide chains as they emerge from the ribosome and block their interaction with the signal recognition particle (SRP), which normally targets nascent secretory peptides to the ER. May also reduce the inherent affinity of ribosomes for protein translocation sites in the ER membrane (M sites).,similarity:Belongs to the NAC-alpha family.,similarity:Contains 1 NAC-A/B (NAC-alpha/beta) domain.,
Background	function:May prevent inappropriate targeting of non-secretory polypeptides to the endoplasmic reticulum (ER). May bind to nascent polypeptide chains as they emerge from the ribosome and block their interaction with the signal recognition

Nanjing BYabs science technology Co.,Ltd



particle (SRP), which normally targets nascent secretory peptides to the ER. May also reduce the inherent affinity of ribosomes for protein translocation sites in the ER membrane (M sites).,similarity:Belongs to the NAC-alpha family.,similarity:Contains 1 NAC-A/B (NAC-alpha/beta) domain.,

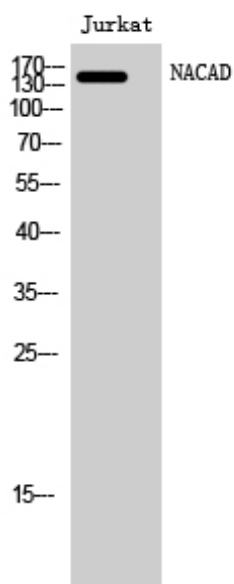
matters needing attention

Avoid repeated freezing and thawing!

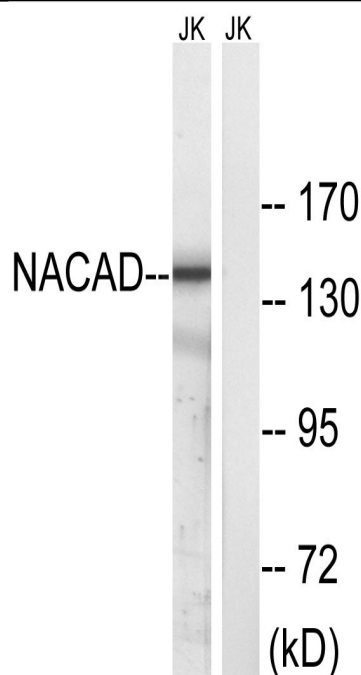
Usage suggestions

This product can be used in immunological reaction related experiments. For more information, please consult technical personnel.

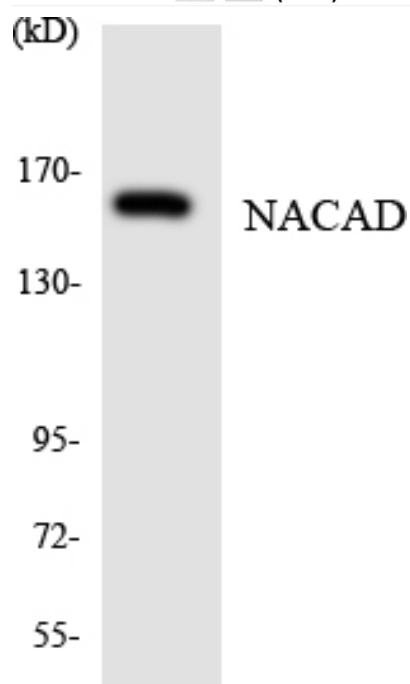
Products Images



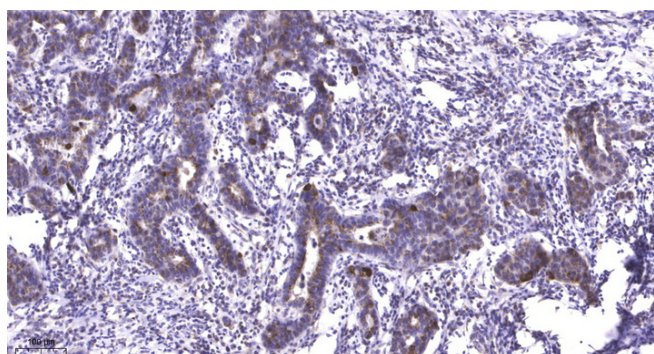
Western Blot analysis of Jurkat cells using NACAD Polyclonal Antibody



Western blot analysis of lysates from Jurkat cells, using NACAD Antibody. The lane on the right is blocked with the synthesized peptide.



Western blot analysis of the lysates from HeLa cells using NACAD antibody.



Immunohistochemical analysis of paraffin-embedded human Breast cancer. 1, Antibody was diluted at 1:200(4° overnight). 2, Tris-EDTA,pH9.0 was used for antigen retrieval. 3,Secondary antibody was diluted at 1:200(room temperature, 45min).