



# MRP-S21 Polyclonal Antibody

Catalog No	BYab-04010
Isotype	IgG
Reactivity	Human;Mouse;Rat;Monkey
Applications	WB;IHC;IF;ELISA
Gene Name	MRPS21
Protein Name	28S ribosomal protein S21 mitochondrial
Immunogen	The antiserum was produced against synthesized peptide derived from human MRPS21. AA range:38-87
Specificity	MRP-S21 Polyclonal Antibody detects endogenous levels of MRP-S21 protein.
Formulation	Liquid in PBS containing 50% glycerol, 0.5% BSA and 0.02% sodium azide.
Source	Polyclonal, Rabbit,IgG
Purification	The antibody was affinity-purified from rabbit antiserum by affinity-chromatography using epitope-specific immunogen.
Dilution	Western Blot: 1/500 - 1/2000. Immunohistochemistry: 1/100 - 1/300. Immunofluorescence: 1/200 - 1/1000. ELISA: 1/40000. Not yet tested in other applications.
Concentration	1 mg/ml
Purity	≥90%
Storage Stability	-20°C/1 year
Synonyms	MRPS21; RPMS21; MDS016; 28S ribosomal protein S21; mitochondrial; MRP-S21; S21mt
Observed Band	11kD
Cell Pathway	Mitochondrion .
Tissue Specificity	Brain,Cerebellum,Hematopoietic stem cell,Lung,Testis,Uterus,
Function	similarity:Belongs to the ribosomal protein S21P family..subunit:Component of the mitochondrial ribosome small subunit (28S) which comprises a 12S rRNA and about 30 distinct proteins.,
Background	Mammalian mitochondrial ribosomal proteins are encoded by nuclear genes and help in protein synthesis within the mitochondrion. Mitochondrial ribosomes (mitoribosomes) consist of a small 28S subunit and a large 39S subunit. They have an estimated 75% protein to rRNA composition compared to prokaryotic ribosomes, where this ratio is reversed. Another difference between mammalian

Nanjing BYabs science technology Co.,Ltd



mitoribosomes and prokaryotic ribosomes is that the latter contain a 5S rRNA. Among different species, the proteins comprising the mitoribosome differ greatly in sequence, and sometimes in biochemical properties, which prevents easy recognition by sequence homology. This gene encodes a 28S subunit protein that belongs to the ribosomal protein S21P family. Pseudogenes corresponding to this gene are found on chromosomes 1p, 1q, 9p, 10p, 10q, 16q, and 17q. Available sequence data analyses identified splice varian

**matters needing attention**

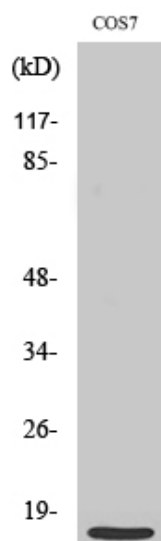
Avoid repeated freezing and thawing!

**Usage suggestions**

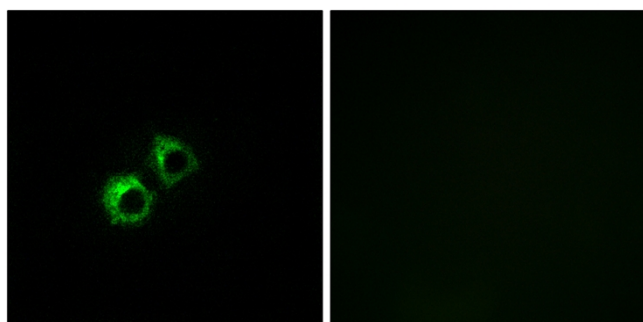
This product can be used in immunological reaction related experiments. For more information, please consult technical personnel.



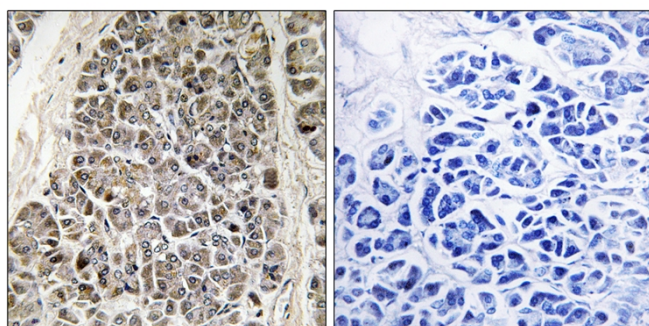
## Products Images



Western Blot analysis of various cells using MRP-S21 Polyclonal Antibody diluted at 1:500



Immunofluorescence analysis of MCF7 cells, using MRPS21 Antibody. The picture on the right is blocked with the synthesized peptide.



Immunohistochemistry analysis of paraffin-embedded human pancreas tissue, using MRPS21 Antibody. The picture on the right is blocked with the synthesized peptide.

**Nanjing BYabscience technology Co.,Ltd**

网址: [www.njbybio.com](http://www.njbybio.com)

官方热线: 025-5229-8998

监督电话: 15950492658

