



MRP-L46 Polyclonal Antibody

Catalog No	BYab-03995
Isotype	IgG
Reactivity	Human;Mouse;Rat
Applications	WB;IHC;IF;ELISA
Gene Name	MRPL46
Protein Name	39S ribosomal protein L46 mitochondrial
Immunogen	The antiserum was produced against synthesized peptide derived from human MRPL46. AA range:111-160
Specificity	MRP-L46 Polyclonal Antibody detects endogenous levels of MRP-L46 protein.
Formulation	Liquid in PBS containing 50% glycerol, 0.5% BSA and 0.02% sodium azide.
Source	Polyclonal, Rabbit,IgG
Purification	The antibody was affinity-purified from rabbit antiserum by affinity-chromatography using epitope-specific immunogen.
Dilution	WB: 1/500 - 1/2000. IHC: 1/100 - 1/300. ELISA: 1/40000.. IF 1:50-200
Concentration	1 mg/ml
Purity	≥90%
Storage Stability	-20°C/1 year
Synonyms	MRPL46; C15orf4; LIECG2; 39S ribosomal protein L46; mitochondrial; L46mt; MRP-L46; P2ECSL
Observed Band	32kD
Cell Pathway	Mitochondrion .
Tissue Specificity	Skeletal muscle,Spleen,
Function	similarity:Belongs to the ribosomal protein L46 family.,
Background	Mammalian mitochondrial ribosomal proteins are encoded by nuclear genes and help in protein synthesis within the mitochondrion. Mitochondrial ribosomes (mitoribosomes) consist of a small 28S subunit and a large 39S subunit. They have an estimated 75% protein to rRNA composition compared to prokaryotic ribosomes, where this ratio is reversed. Another difference between mammalian mitoribosomes and prokaryotic ribosomes is that the latter contain a 5S rRNA. Among different species, the proteins comprising the mitoribosome differ greatly in sequence, and sometimes in biochemical properties, which prevents easy

Nanjing BYabscience technology Co.,Ltd



recognition by sequence homology. This gene encodes a 39S subunit protein.
[provided by RefSeq, Jul 2008],

**matters needing
attention**

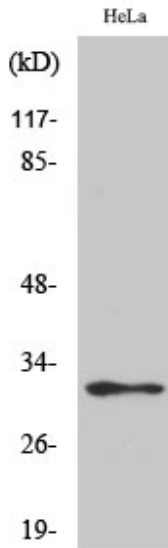
Avoid repeated freezing and thawing!

Usage suggestions

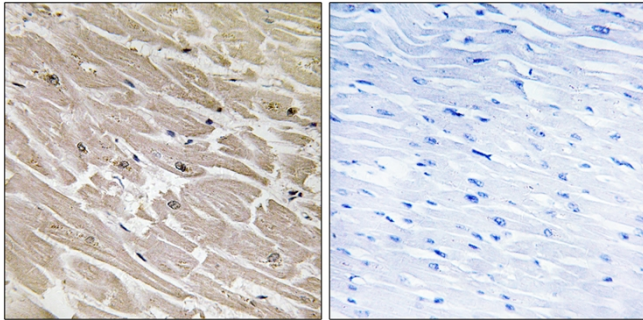
This product can be used in immunological reaction related experiments. For
more information, please consult technical personnel.



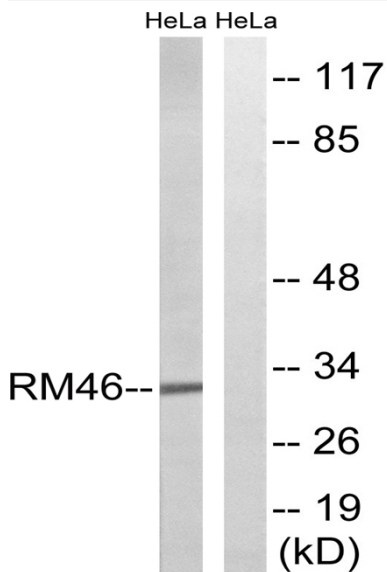
Products Images



Western Blot analysis of various cells using MRP-L46 Polyclonal Antibody diluted at 1:500



Immunohistochemistry analysis of paraffin-embedded human heart tissue, using MRPL46 Antibody. The picture on the right is blocked with the synthesized peptide.



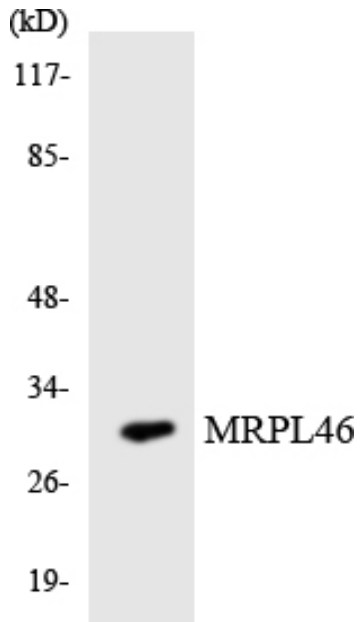
Western blot analysis of lysates from HeLa cells, using MRPL46 Antibody. The lane on the right is blocked with the synthesized peptide.

Nanjing BYabs science technology Co.,Ltd

网址: www.njbybio.com

官方热线: 025-5229-8998

监督电话: 15950492658



Western blot analysis of the lysates from HUVEC cells using MRPL46 antibody.