



MRP-L11 Polyclonal Antibody

Catalog No	BYab-03974
Isotype	IgG
Reactivity	Human;Monkey
Applications	WB;IHC;IF;ELISA
Gene Name	MRPL11
Protein Name	39S ribosomal protein L11 mitochondrial
Immunogen	The antiserum was produced against synthesized peptide derived from human MRPL11. AA range:21-70
Specificity	MRP-L11 Polyclonal Antibody detects endogenous levels of MRP-L11 protein.
Formulation	Liquid in PBS containing 50% glycerol, 0.5% BSA and 0.02% sodium azide.
Source	Polyclonal, Rabbit,IgG
Purification	The antibody was affinity-purified from rabbit antiserum by affinity-chromatography using epitope-specific immunogen.
Dilution	Western Blot: 1/500 - 1/2000. Immunohistochemistry: 1/100 - 1/300. Immunofluorescence: 1/200 - 1/1000. ELISA: 1/40000. Not yet tested in other applications.
Concentration	1 mg/ml
Purity	≥90%
Storage Stability	-20°C/1 year
Synonyms	MRPL11; CGI-113; 39S ribosomal protein L11; mitochondrial; L11mt; MRP-L11
Observed Band	21kD
Cell Pathway	Mitochondrion .
Tissue Specificity	Duodenum,Lymph,
Function	similarity:Belongs to the ribosomal protein L11P family.,
Background	This nuclear gene encodes a 39S subunit component of the mitochondrial ribosome. Alternative splicing results in multiple transcript variants. Pseudogenes for this gene are found on chromosomes 5 and 12. [provided by RefSeq, May 2014],
matters needing attention	Avoid repeated freezing and thawing!

Nanjing BYabscience technology Co.,Ltd



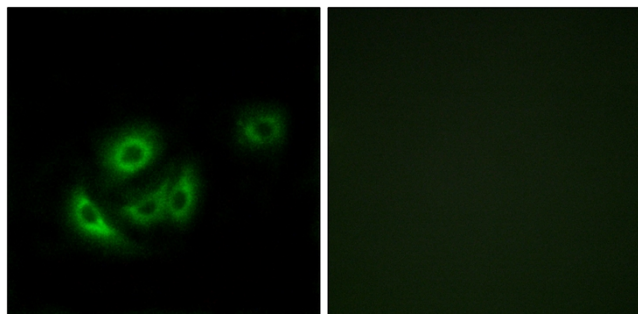
Usage suggestions

This product can be used in immunological reaction related experiments. For more information, please consult technical personnel.

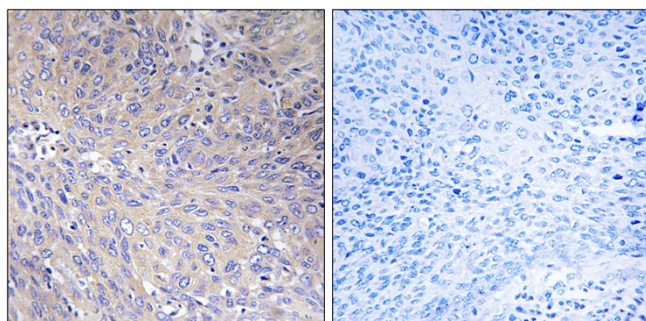
Products Images



Western Blot analysis of various cells using MRP-L11 Polyclonal Antibody diluted at 1:500

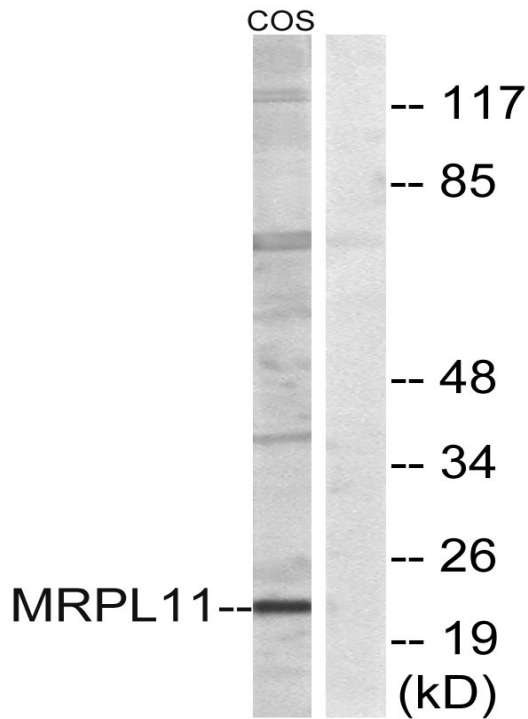


Immunofluorescence analysis of A549 cells, using MRPL11 Antibody. The picture on the right is blocked with the synthesized peptide.



Immunohistochemistry analysis of paraffin-embedded human cervix carcinoma tissue, using MRPL11 Antibody. The picture on the right is blocked with the synthesized peptide.

Nanjing BYabscience technology Co.,Ltd



Western blot analysis of lysates from COS cells, using MRPL11 Antibody. The lane on the right is blocked with the synthesized peptide.