



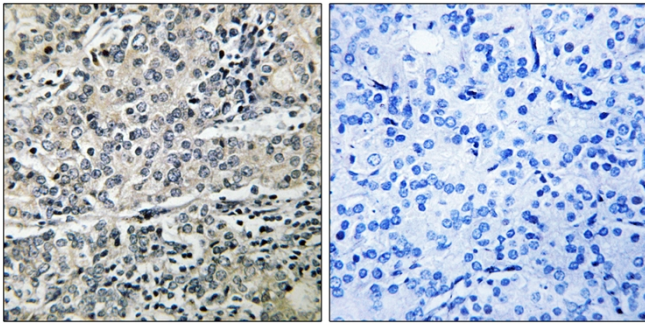
MP68 Polyclonal Antibody

Catalog No	BYab-03969
Isotype	IgG
Reactivity	Human;Mouse
Applications	IHC;IF;ELISA
Gene Name	MP68
Protein Name	6.8 kDa mitochondrial proteolipid
Immunogen	The antiserum was produced against synthesized peptide derived from human MP68. AA range:9-58
Specificity	MP68 Polyclonal Antibody detects endogenous levels of MP68 protein.
Formulation	Liquid in PBS containing 50% glycerol, 0.5% BSA and 0.02% sodium azide.
Source	Polyclonal, Rabbit,IgG
Purification	The antibody was affinity-purified from rabbit antiserum by affinity-chromatography using epitope-specific immunogen.
Dilution	IHC: 1/100 - 1/300. ELISA: 1/20000.. IF 1:50-200
Concentration	1 mg/ml
Purity	≥90%
Storage Stability	-20°C/1 year
Synonyms	MP68; C14orf2; 6.8 kDa mitochondrial proteolipid
Observed Band	
Cell Pathway	Mitochondrion membrane ; Single-pass membrane protein .
Tissue Specificity	Fetal liver,Lung,Neuroblastoma,Umbilical cord blood,
Function	similarity:Belongs to the small mitochondrial proteolipid family.,
Background	similarity:Belongs to the small mitochondrial proteolipid family.,
matters needing attention	Avoid repeated freezing and thawing!
Usage suggestions	This product can be used in immunological reaction related experiments. For more information, please consult technical personnel.

Nanjing BYabscience technology Co.,Ltd



Products Images



Immunohistochemistry analysis of paraffin-embedded human prostate carcinoma tissue, using MP68 Antibody. The picture on the right is blocked with the synthesized peptide.