



MLK4 Polyclonal Antibody

Catalog No	BYab-03963
Isotype	IgG
Reactivity	Human;Rat;Mouse;
Applications	WB;ELISA;IHC
Gene Name	MLK4
Protein Name	Mitogen-activated protein kinase kinase kinase MLK4
Immunogen	The antiserum was produced against synthesized peptide derived from human MAP3KL4. AA range:631-680
Specificity	MLK4 Polyclonal Antibody detects endogenous levels of MLK4 protein.
Formulation	Liquid in PBS containing 50% glycerol, 0.5% BSA and 0.02% sodium azide.
Source	Polyclonal, Rabbit,IgG
Purification	The antibody was affinity-purified from rabbit antiserum by affinity-chromatography using epitope-specific immunogen.
Dilution	WB 1:500-2000;IHC-p 1:50-300; ELISA 2000-20000
Concentration	1 mg/ml
Purity	≥90%
Storage Stability	-20°C/1 year
Synonyms	MLK4; KIAA1804; Mitogen-activated protein kinase kinase kinase MLK4; Mixed lineage kinase 4
Observed Band	110kD
Cell Pathway	intracellular,
Tissue Specificity	Brain,Heart,
Function	catalytic activity:ATP + a protein = ADP + a phosphoprotein.,cofactor:Magnesium.,enzyme regulation:Homodimerization via the leucine zipper domains is required for autophosphorylation and subsequent activation.,function:Activates the JUN N-terminal pathway.,PTM:Autophosphorylation on serine and threonine residues within the activation loop plays a role in enzyme activation.,similarity:Belongs to the protein kinase superfamily. STE Ser/Thr protein kinase family. MAP kinase kinase kinase subfamily.,similarity:Contains 1 protein kinase domain.,similarity:Contains 1 SH3 domain.,subunit:Homodimer.,

Nanjing BYabscience technology Co.,Ltd

网址: www.njbybio.com

官方热线: 025-5229-8998

监督电话: 15950492658



Background	catalytic activity:ATP + a protein = ADP + a phosphoprotein.,cofactor:Magnesium.,enzyme regulation:Homodimerization via the leucine zipper domains is required for autophosphorylation and subsequent activation.,function:Activates the JUN N-terminal pathway.,PTM:Autophosphorylation on serine and threonine residues within the activation loop plays a role in enzyme activation.,similarity:Belongs to the protein kinase superfamily. STE Ser/Thr protein kinase family. MAP kinase kinase kinase subfamily.,similarity:Contains 1 protein kinase domain.,similarity:Contains 1 SH3 domain.,subunit:Homodimer.,
matters needing attention	Avoid repeated freezing and thawing!
Usage suggestions	This product can be used in immunological reaction related experiments. For more information, please consult technical personnel.

Nanjing BYabscience technology Co.,Ltd

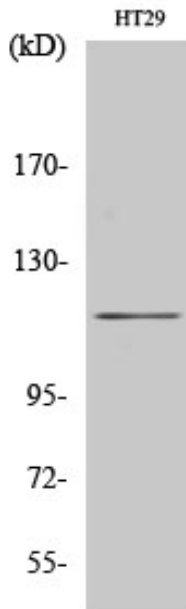
网址: www.njbybio.com

官方热线: 025-5229-8998

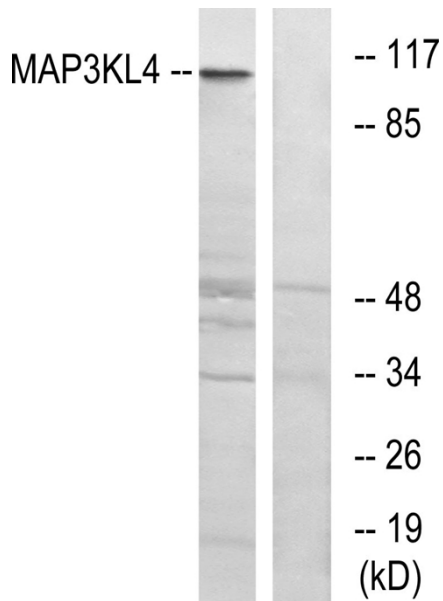
监督电话: 15950492658



Products Images



Western Blot analysis of various cells using MLK4 Polyclonal Antibody



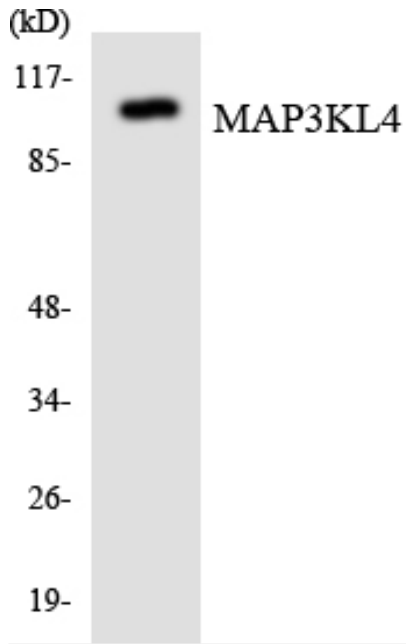
Western blot analysis of lysates from HT-29 cells, using MAP3KL4 Antibody. The lane on the right is blocked with the synthesized peptide.

Nanjing BYabs science technology Co.,Ltd

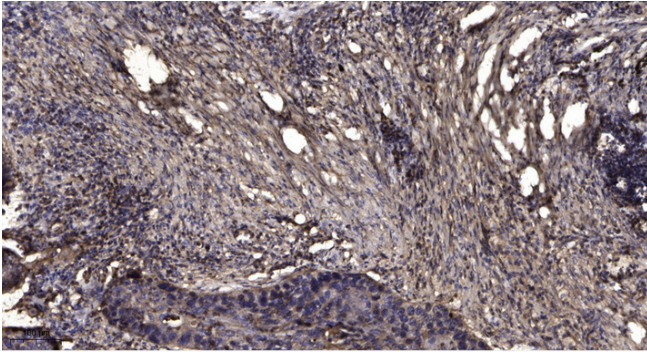
网址: www.njbybio.com

官方热线: 025-5229-8998

监督电话: 15950492658



Western blot analysis of the lysates from HepG2 cells using MAP3KL4 antibody.



Immunohistochemical analysis of paraffin-embedded human Squamous cell carcinoma of lung. 1, Antibody was diluted at 1:200(4° overnight). 2, Tris-EDTA,pH9.0 was used for antigen retrieval. 3,Secondary antibody was diluted at 1:200(room temperature, 45min).