



# MGST1 Polyclonal Antibody

|                           |   |
|---------------------------|---|
| <b>Catalog No</b>         | BYab-03955  |
| <b>Isotype</b>            | IgG   |
| <b>Reactivity</b>         | Human;Mouse;  |
| <b>Applications</b>       | WB;IHC  |
| <b>Gene Name</b>          | MGST1   |
| <b>Protein Name</b>       | Microsomal glutathione S-transferase 1  |
| <b>Immunogen</b>          | The antiserum was produced against synthesized peptide derived from human MGST1. AA range:42-91   |
| <b>Specificity</b>        | MGST1 Polyclonal Antibody detects endogenous levels of MGST1 protein.   |
| <b>Formulation</b>        | Liquid in PBS containing 50% glycerol, 0.5% BSA and 0.02% sodium azide.   |
| <b>Source</b>             | Polyclonal, Rabbit,IgG  |
| <b>Purification</b>       | The antibody was affinity-purified from rabbit antiserum by affinity-chromatography using epitope-specific immunogen.   |
| <b>Dilution</b>           | WB 1:500-2000;IHC-p 1:50-300  |
| <b>Concentration</b>      | 1 mg/ml   |
| <b>Purity</b>             | ≥90%  |
| <b>Storage Stability</b>  | -20°C/1 year  |
| <b>Synonyms</b>           | MGST1; GST12; MGST; Microsomal glutathione S-transferase 1; Microsomal GST-1; Microsomal GST-I  |
| <b>Observed Band</b>      | 18kD  |
| <b>Cell Pathway</b>       | Microsome . Mitochondrion outer membrane ; Peripheral membrane protein . Endoplasmic reticulum membrane ; Multi-pass membrane protein .   |
| <b>Tissue Specificity</b> | Highly expressed in liver.  |
| <b>Function</b>           | catalytic activity:RX + glutathione = HX + R-S-glutathione.,enzyme regulation:Activated by N-ethylmaleimide, except in the testis.,function:Conjugation of reduced glutathione to a wide number of exogenous and endogenous hydrophobic electrophiles. Has a wide substrate specificity.,similarity:Belongs to the MAPEG family.,subunit:Homotrimer.,tissue specificity:Highly expressed in liver., |
| <b>Background</b>         | The MAPEG (Membrane Associated Proteins in Eicosanoid and Glutathione metabolism) family consists of six human proteins, two of which are involved in the production of leukotrienes and prostaglandin E, important mediators of  |

**Nanjing BYabscience technology Co.,Ltd**



inflammation. Other family members, demonstrating glutathione S-transferase and peroxidase activities, are involved in cellular defense against toxic, carcinogenic, and pharmacologically active electrophilic compounds. This gene encodes a protein that catalyzes the conjugation of glutathione to electrophiles and the reduction of lipid hydroperoxides. This protein is localized to the endoplasmic reticulum and outer mitochondrial membrane where it is thought to protect these membranes from oxidative stress. Several transcript variants, some non-protein coding and some protein coding, have been found for this gene. [provided by RefSeq, May 2012],

**matters needing attention**

Avoid repeated freezing and thawing!

**Usage suggestions**

This product can be used in immunological reaction related experiments. For more information, please consult technical personnel.

Nanjing BYabscience technology Co.,Ltd

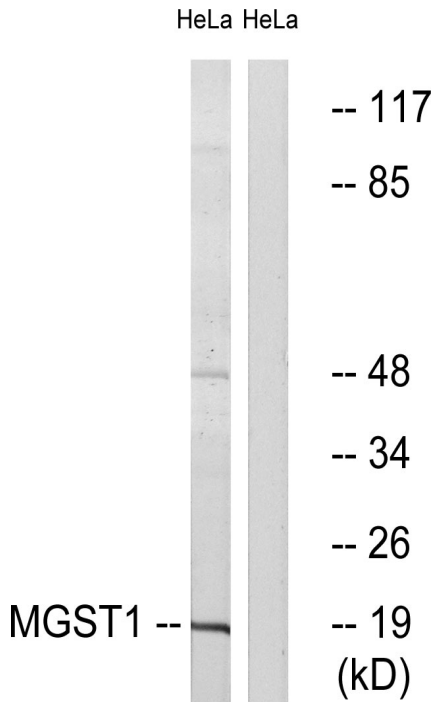
网址: [www.njbybio.com](http://www.njbybio.com)

官方热线: 025-5229-8998

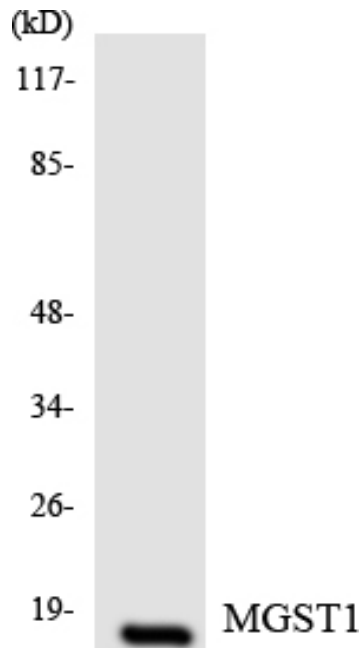
监督电话: 15950492658



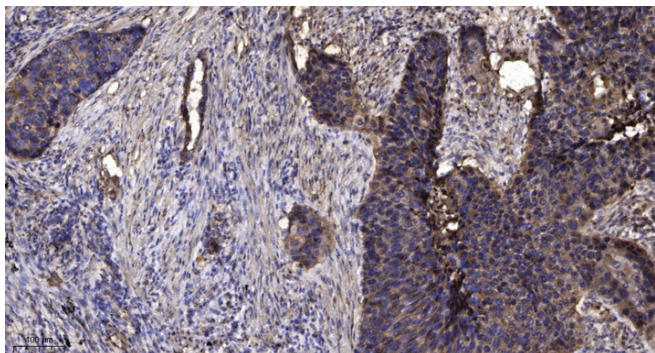
## Products Images



Western blot analysis of lysates from HeLa cells, using MGST1 Antibody. The lane on the right is blocked with the synthesized peptide.



Western blot analysis of the lysates from RAW264.7 cells using MGST1 antibody.



Immunohistochemical analysis of paraffin-embedded human Squamous cell carcinoma of lung. 1, Antibody was diluted at 1:200(4° overnight). 2, Tris-EDTA,pH9.0 was used for antigen retrieval. 3,Secondary antibody was diluted at 1:200(room temperature, 45min).