



Melan-A Polyclonal Antibody

Catalog No	BYab-03954
Isotype	IgG
Reactivity	Human;Rat;Mouse;
Applications	WB;IHC;IF;ELISA
Gene Name	MLANA
Protein Name	Melanoma antigen recognized by T-cells 1
Immunogen	The antiserum was produced against synthesized peptide derived from human MART-1. AA range:41-90
Specificity	Melan-A Polyclonal Antibody detects endogenous levels of Melan-A protein.
Formulation	Liquid in PBS containing 50% glycerol, 0.5% BSA and 0.02% sodium azide.
Source	Polyclonal, Rabbit,IgG
Purification	The antibody was affinity-purified from rabbit antiserum by affinity-chromatography using epitope-specific immunogen.
Dilution	WB: 1/500 - 1/2000. IHC: 1/100 - 1/300. ELISA: 1/40000.. IF 1:50-200
Concentration	1 mg/ml
Purity	≥90%
Storage Stability	-20°C/1 year
Synonyms	MLANA; MART1; Melanoma antigen recognized by T-cells 1; MART-1; Antigen LB39-AA; Antigen SK29-AA; Protein Melan-A
Observed Band	15kD
Cell Pathway	Endoplasmic reticulum membrane; Single-pass type III membrane protein. Golgi apparatus. Golgi apparatus, trans-Golgi network membrane. Melanosome. Also found in small vesicles and tubules dispersed over the entire cytoplasm. A small fraction of the protein is inserted into the membrane in an inverted orientation. Inversion of membrane topology results in the relocalization of the protein from a predominant Golgi/post-Golgi area to the endoplasmic reticulum. Melanoma cells expressing the protein with an inverted membrane topology are more effectively recognized by specific cytolytic T-lymphocytes than those expressing the protein in its native membrane orientation.
Tissue Specificity	Expression is restricted to melanoma and melanocyte cell lines and retina.
Function	tissue specificity:Expression is restricted to melanoma and melanocyte cell lines and retina.,

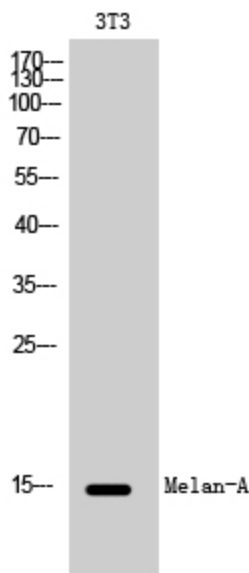
Nanjing BYabscience technology Co.,Ltd



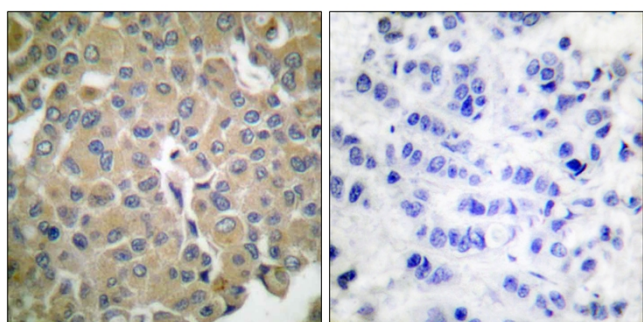
Background	tissue specificity:Expression is restricted to melanoma and melanocyte cell lines and retina.,
matters needing attention	Avoid repeated freezing and thawing!
Usage suggestions	This product can be used in immunological reaction related experiments. For more information, please consult technical personnel.



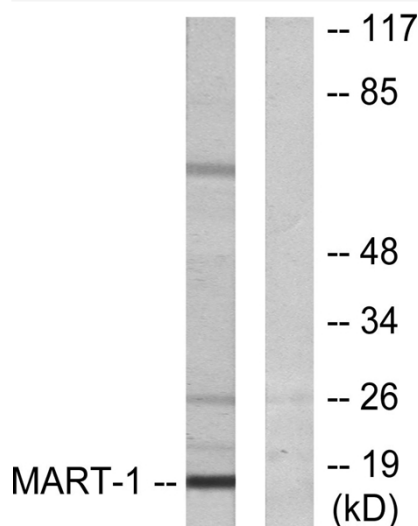
Products Images



Western Blot analysis of 3T3 cells using Melan-A Polyclonal Antibody



Immunohistochemistry analysis of paraffin-embedded human breast carcinoma tissue, using MART-1 Antibody. The picture on the right is blocked with the synthesized peptide.



Western blot analysis of lysates from NIH/3T3 cells, using MART-1 Antibody. The lane on the right is blocked with the synthesized peptide.

Nanjing BYabs science technology Co.,Ltd

网址: www.njbybio.com

官方热线: 025-5229-8998

监督电话: 15950492658