



Lad Polyclonal Antibody

Catalog No	BYab-03945
Isotype	IgG
Reactivity	Human;Rat;Mouse;
Applications	WB;IHC;IF;ELISA
Gene Name	SH2D2A
Protein Name	SH2 domain-containing protein 2A
Immunogen	The antiserum was produced against synthesized peptide derived from human SH2D2A. AA range:211-260
Specificity	Lad Polyclonal Antibody detects endogenous levels of Lad protein.
Formulation	Liquid in PBS containing 50% glycerol, 0.5% BSA and 0.02% sodium azide.
Source	Polyclonal, Rabbit,IgG
Purification	The antibody was affinity-purified from rabbit antiserum by affinity-chromatography using epitope-specific immunogen.
Dilution	WB: 1/500 - 1/2000. IHC: 1/100 - 1/300. ELISA: 1/10000.. IF 1:50-200
Concentration	1 mg/ml
Purity	≥90%
Storage Stability	-20°C/1 year
Synonyms	SH2D2A; SCAP; TSAD; VRAP; SH2 domain-containing protein 2A; SH2 domain-containing adapter protein; T cell-specific adapter protein; TSAd; VEGF receptor-associated protein
Observed Band	48kD
Cell Pathway	Cytoplasm.
Tissue Specificity	Expression limited to tissues of the immune system and, in particular, activated T-cells. Expressed in peripheral blood leukocytes, thymus and spleen. Much lower expression or undetectable, in brain, placenta, skeletal muscle, prostate, testis, ovary, small intestine, and colon. Expressed at low levels in unstimulated T-cells, but not expressed in normal resting or activated B-cells. According to PubMed:10692392, expression is not restricted to activated T-cells, but strongly expressed in blood cell lineages, the endothelium and other cell and tissue types, such as heart, lung, and liver.
Function	function:Could be a T-cell-specific adapter protein involved in the control of T-cell activation. May play a role in the CD4-p56-LCK-dependent signal transduction pathway. Could also play an important role in normal and pathological

Nanjing BYabscience technology Co.,Ltd



angiogenesis. Could be an adapter protein that facilitates and regulates interaction of KDR with effector proteins important to endothelial cell survival and proliferation.,induction:Rapidly induced after activation of T-cells. However, the gene continues to be expressed in long-term cultures of activated T-cells.,PTM:Phosphorylated on tyrosine residues.,similarity:Contains 1 SH2 domain.,subunit:Interacts with KDR.,tissue specificity:Expression limited to tissues of the immune system and, in particular, activated T-cells. Expressed in peripheral blood leukocytes, thymus and spleen. Much lower expression or undetectable, in brain, placenta, skeletal muscle, pr

Background

This gene encodes an adaptor protein thought to function in T-cell signal transduction. A related protein in mouse is responsible for the activation of lymphocyte-specific protein-tyrosine kinase and functions in downstream signaling. Alternative splicing results in multiple transcript variants. [provided by RefSeq, Mar 2010],

matters needing attention

Avoid repeated freezing and thawing!

Usage suggestions

This product can be used in immunological reaction related experiments. For more information, please consult technical personnel.

Nanjing BYabscience technology Co.,Ltd

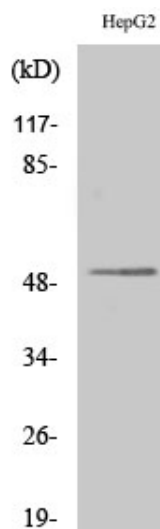
网址: www.njbybio.com

官方热线: 025-5229-8998

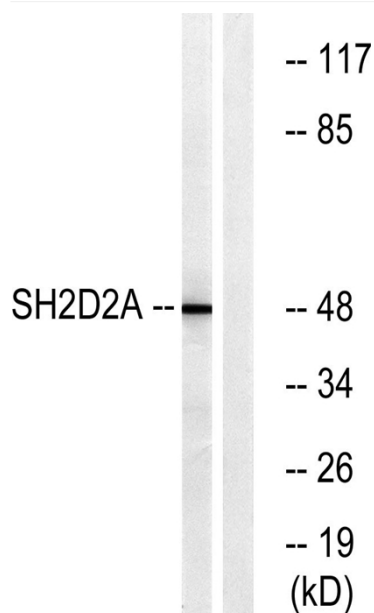
监督电话: 15950492658



Products Images



Western Blot analysis of various cells using Lad Polyclonal Antibody



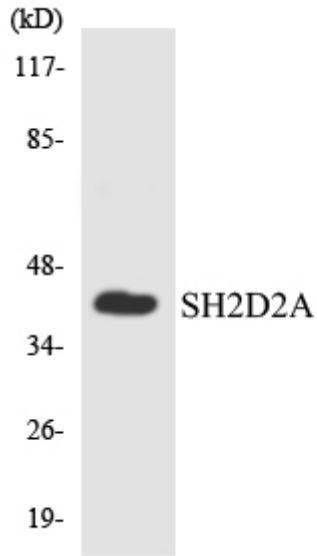
Western blot analysis of lysates from HepG2 cells, using SH2D2A Antibody. The lane on the right is blocked with the synthesized peptide.

Nanjing BYabs science technology Co.,Ltd

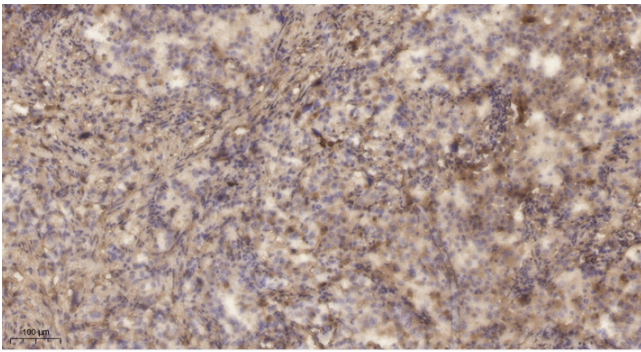
网址: www.njbybio.com

官方热线: 025-5229-8998

监督电话: 15950492658



Western blot analysis of the lysates from HUVEC cells using SH2D2A antibody.



Immunohistochemical analysis of paraffin-embedded human lung cancer. 1, Antibody was diluted at 1:200 (4° overnight). 2, Tris-EDTA, pH 9.0 was used for antigen retrieval. 3, Secondary antibody was diluted at 1:200 (room temperature, 45 min).