



# KLHL3 Polyclonal Antibody

<b>Catalog No</b>	BYab-03944
<b>Isotype</b>	IgG
<b>Reactivity</b>	Human;Rat;Mouse;
<b>Applications</b>	WB;IHC;IF;ELISA
<b>Gene Name</b>	KLHL3
<b>Protein Name</b>	Kelch-like protein 3
<b>Immunogen</b>	The antiserum was produced against synthesized peptide derived from human KLHL3. AA range:10-59
<b>Specificity</b>	KLHL3 Polyclonal Antibody detects endogenous levels of KLHL3 protein.
<b>Formulation</b>	Liquid in PBS containing 50% glycerol, 0.5% BSA and 0.02% sodium azide.
<b>Source</b>	Polyclonal, Rabbit,IgG
<b>Purification</b>	The antibody was affinity-purified from rabbit antiserum by affinity-chromatography using epitope-specific immunogen.
<b>Dilution</b>	Western Blot: 1/500 - 1/2000. Immunohistochemistry: 1/100 - 1/300. Immunofluorescence: 1/200 - 1/1000. ELISA: 1/20000. Not yet tested in other applications.
<b>Concentration</b>	1 mg/ml
<b>Purity</b>	≥90%
<b>Storage Stability</b>	-20°C/1 year
<b>Synonyms</b>	KLHL3; KIAA1129; Kelch-like protein 3
<b>Observed Band</b>	65kD
<b>Cell Pathway</b>	Cytoplasm, cytoskeleton . Cytoplasm, cytosol .
<b>Tissue Specificity</b>	Widely expressed.
<b>Function</b>	function:Probable substrate-specific adapter of an E3 ubiquitin-protein ligase complex which mediates the ubiquitination and subsequent proteasomal degradation of target proteins.,pathway:Protein modification; protein ubiquitination.,similarity:Contains 1 BTB (POZ) domain.,similarity:Contains 6 Kelch repeats.,subunit:Interacts with cul3.,tissue specificity:Seems to be expressed in a variety of tissues.,
<b>Background</b>	This gene is ubiquitously expressed and encodes a full-length protein which has an N-terminal BTB domain followed by a BACK domain and six kelch-like repeats in the C-terminus. These kelch-like repeats promote substrate ubiquitination of

**Nanjing BYabscience technology Co.,Ltd**



bound proteins via interaction of the BTB domain with the CUL3 (cullin 3) component of a cullin-RING E3 ubiquitin ligase (CRL) complex. Mutations in this gene cause pseudohypoaldosteronism type IID (PHA2D); a rare Mendelian syndrome featuring hypertension, hyperkalaemia and metabolic acidosis. Alternative splicing results in multiple transcript variants encoding distinct isoforms. [provided by RefSeq, Mar 2012],

**matters needing attention**

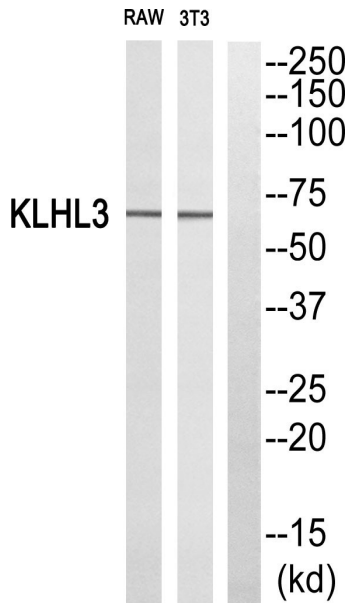
Avoid repeated freezing and thawing!

**Usage suggestions**

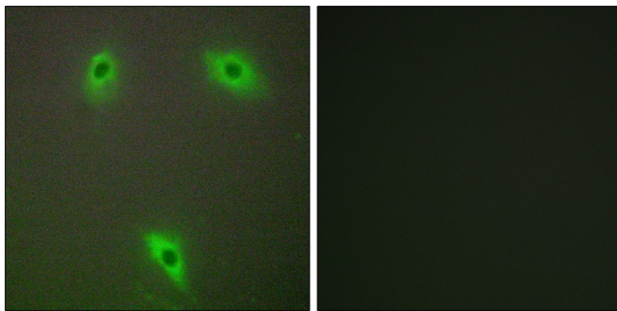
This product can be used in immunological reaction related experiments. For more information, please consult technical personnel.



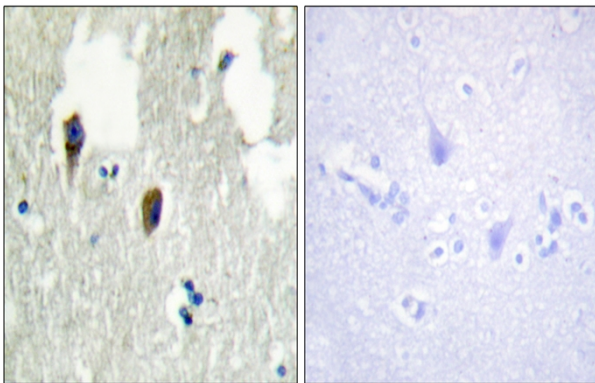
## Products Images



Western blot analysis of KLHL3 Antibody. The lane on the right is blocked with the KLHL3 peptide.



Immunofluorescence analysis of A549 cells, using KLHL3 Antibody. The picture on the right is blocked with the synthesized peptide.



Immunohistochemistry analysis of paraffin-embedded human brain tissue, using KLHL3 Antibody. The picture on the right is blocked with the synthesized peptide.

**Nanjing BYabs science technology Co.,Ltd**

网址: [www.njbybio.com](http://www.njbybio.com)

官方热线: 025-5229-8998

监督电话: 15950492658

