



# HSP40 Polyclonal Antibody

<b>Catalog No</b>	BYab-03923
<b>Isotype</b>	IgG
<b>Reactivity</b>	Human;Mouse;Rat
<b>Applications</b>	WB;IHC;IF;ELISA
<b>Gene Name</b>	DNAJB1
<b>Protein Name</b>	DnaJ homolog subfamily B member 1
<b>Immunogen</b>	The antiserum was produced against synthesized peptide derived from human HSP40. AA range:271-320
<b>Specificity</b>	HSP40 Polyclonal Antibody detects endogenous levels of HSP40 protein.
<b>Formulation</b>	Liquid in PBS containing 50% glycerol, 0.5% BSA and 0.02% sodium azide.
<b>Source</b>	Polyclonal, Rabbit,IgG
<b>Purification</b>	The antibody was affinity-purified from rabbit antiserum by affinity-chromatography using epitope-specific immunogen.
<b>Dilution</b>	Western Blot: 1/500 - 1/2000. Immunohistochemistry: 1/100 - 1/300. Immunofluorescence: 1/200 - 1/1000. ELISA: 1/10000. Not yet tested in other applications.
<b>Concentration</b>	1 mg/ml
<b>Purity</b>	≥90%
<b>Storage Stability</b>	-20°C/1 year
<b>Synonyms</b>	DNAJB1; DNAJ1; HDJ1; HSPF1; DnaJ homolog subfamily B member 1; DnaJ protein homolog 1; Heat shock 40 kDa protein 1; HSP40; Heat shock protein 40; Human DnaJ protein 1; hDj-1
<b>Observed Band</b>	45kD
<b>Cell Pathway</b>	Cytoplasm . Nucleus . Nucleus, nucleolus . Translocates rapidly from the cytoplasm to the nucleus, and especially to the nucleoli, upon heat shock.
<b>Tissue Specificity</b>	Brain,Heart,Lung,Placenta,
<b>Function</b>	function:Interacts with HSP70 and can stimulate its ATPase activity. Stimulates the association between HSC70 and HIP.,induction:By heat shock.,similarity:Contains 1 J domain.,subcellular location:Translocates rapidly from the cytoplasm to the nucleus, and especially to the nucleoli, upon heat shock.,subunit:Interacts with DNAJC3.,
<b>Background</b>	This gene encodes a member of the DnaJ or Hsp40 (heat shock protein 40 kD) family of proteins. DNAJ family members are characterized by a highly conserved

**Nanjing BYabscience technology Co.,Ltd**



amino acid stretch called the &apos;J-domain&apos;; and function as one of the two major classes of molecular chaperones involved in a wide range of cellular events, such as protein folding and oligomeric protein complex assembly. The encoded protein is a molecular chaperone that stimulates the ATPase activity of Hsp70 heat-shock proteins in order to promote protein folding and prevent misfolded protein aggregation. Alternative splicing results in multiple transcript variants. [provided by RefSeq, Sep 2015],

**matters needing attention**

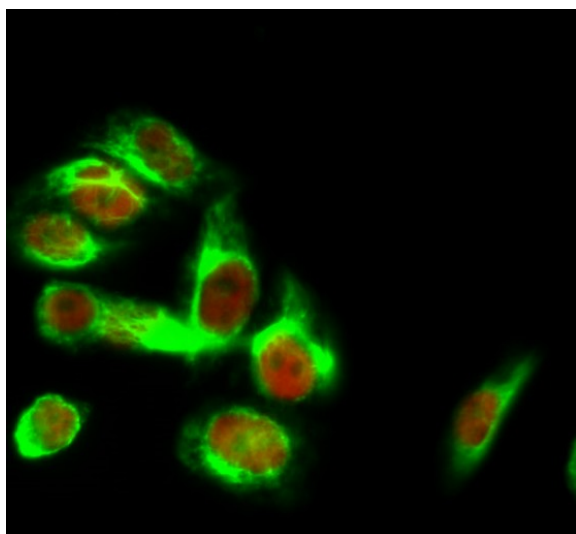
Avoid repeated freezing and thawing!

**Usage suggestions**

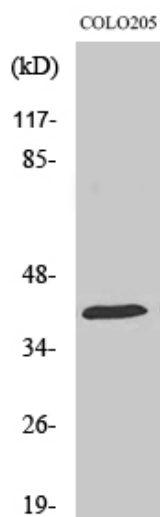
This product can be used in immunological reaction related experiments. For more information, please consult technical personnel.



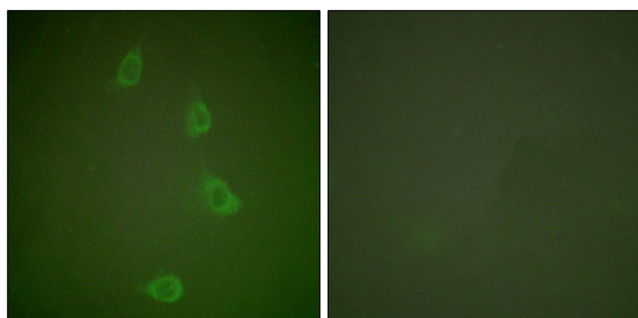
## Products Images



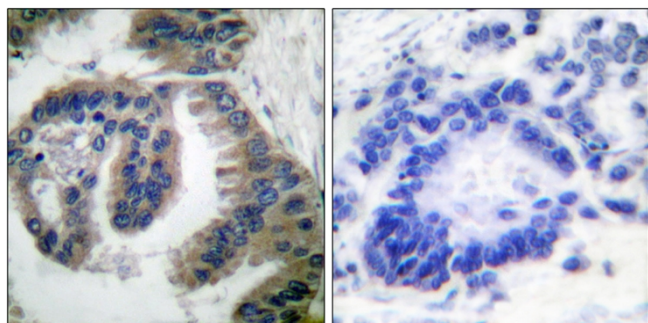
Immunofluorescence analysis of HeLa cell. 1, HSP40 Polyclonal Antibody (red) was diluted at 1:200 (4° overnight). Caspase-8 Monoclonal Antibody (2G12) (green) was diluted at 1:200 (4° overnight). 2, Goat Anti Rabbit Alexa Fluor 594 Catalog: RS3611 was diluted at 1:1000 (room temperature, 50min). Goat Anti Mouse Alexa Fluor 488 Catalog: RS3208 was diluted at 1:1000 (room temperature, 50min).



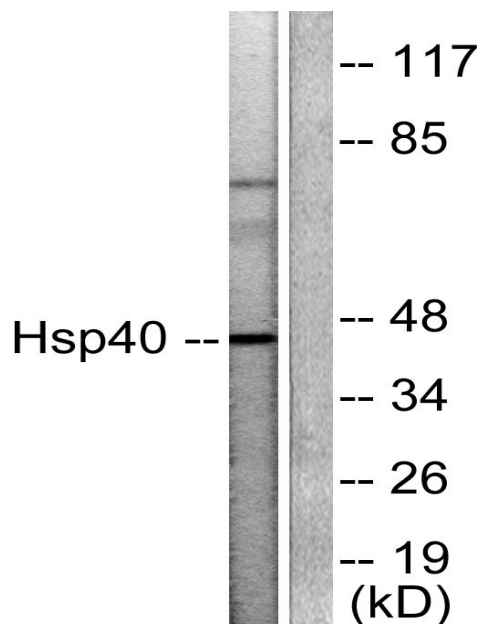
Western Blot analysis of various cells using HSP40 Polyclonal Antibody



Immunofluorescence analysis of NIH/3T3 cells, using HSP40 Antibody. The picture on the right is blocked with the synthesized peptide.



Immunohistochemistry analysis of paraffin-embedded human lung carcinoma tissue, using HSP40 Antibody. The picture on the right is blocked with the synthesized peptide.



Western blot analysis of lysates from COLO205 cells, using HSP40 Antibody. The lane on the right is blocked with the synthesized peptide.