



# HSP10 Polyclonal Antibody

<b>Catalog No</b>	BYab-03919
<b>Isotype</b>	IgG
<b>Reactivity</b>	Human;Mouse;Rat
<b>Applications</b>	WB;IHC;IF;ELISA
<b>Gene Name</b>	HSPE1
<b>Protein Name</b>	10 kDa heat shock protein mitochondrial
<b>Immunogen</b>	The antiserum was produced against synthesized peptide derived from human HSP10. AA range:51-100
<b>Specificity</b>	HSP10 Polyclonal Antibody detects endogenous levels of HSP10 protein.
<b>Formulation</b>	Liquid in PBS containing 50% glycerol, 0.5% BSA and 0.02% sodium azide.
<b>Source</b>	Polyclonal, Rabbit,IgG
<b>Purification</b>	The antibody was affinity-purified from rabbit antiserum by affinity-chromatography using epitope-specific immunogen.
<b>Dilution</b>	Western Blot: 1/500 - 1/2000. Immunohistochemistry: 1/100 - 1/300. Immunofluorescence: 1/200 - 1/1000. ELISA: 1/10000. Not yet tested in other applications.
<b>Concentration</b>	1 mg/ml
<b>Purity</b>	≥90%
<b>Storage Stability</b>	-20°C/1 year
<b>Synonyms</b>	HSPE1; 10 kDa heat shock protein; mitochondrial; Hsp10; 10 kDa chaperonin; Chaperonin 10; CPN10; Early-pregnancy factor; EPF
<b>Observed Band</b>	10kD
<b>Cell Pathway</b>	Mitochondrion matrix.
<b>Tissue Specificity</b>	B-cell lymphoma,Uterus,
<b>Function</b>	function:Eukaryotic CPN10 homolog which is essential for mitochondrial protein biogenesis, together with CPN60. Binds to CPN60 in the presence of Mg-ATP and suppresses the ATPase activity of the latter.,induction:By stress.,mass spectrometry: PubMed:7912672,similarity:Belongs to the groES chaperonin family.,subunit:Homohexamer.,
<b>Background</b>	This gene encodes a major heat shock protein which functions as a chaperonin. Its structure consists of a heptameric ring which binds to another heat shock protein in order to form a symmetric, functional heterodimer which enhances

**Nanjing BYabs science technology Co.,Ltd**



protein folding in an ATP-dependent manner. This gene and its co-chaperonin, HSPD1, are arranged in a head-to-head orientation on chromosome 2. Naturally occurring read-through transcription occurs between this locus and the neighboring locus MOBKL3.[provided by RefSeq, Feb 2011],

**matters needing attention**

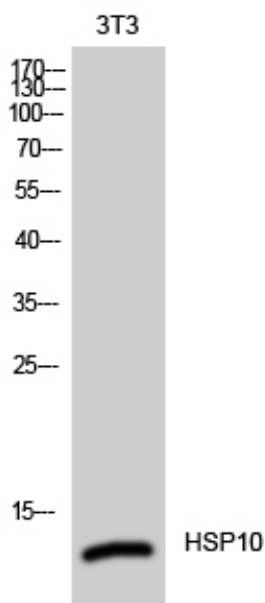
Avoid repeated freezing and thawing!

**Usage suggestions**

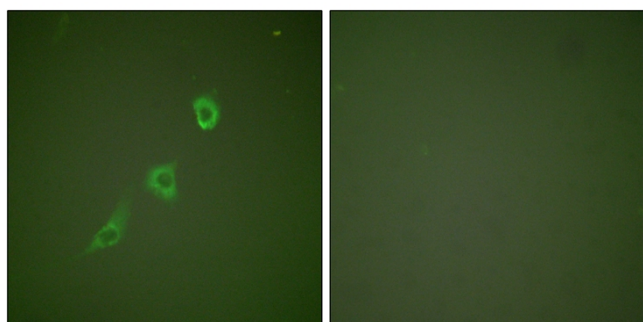
This product can be used in immunological reaction related experiments. For more information, please consult technical personnel.



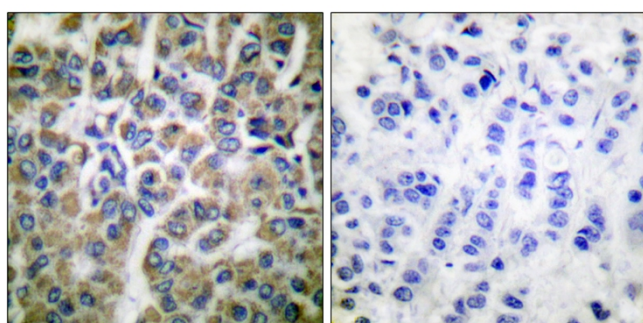
## Products Images



Western Blot analysis of 3T3 cells using HSP10 Polyclonal Antibody



Immunofluorescence analysis of NIH/3T3 cells, using HSP10 Antibody. The picture on the right is blocked with the synthesized peptide.



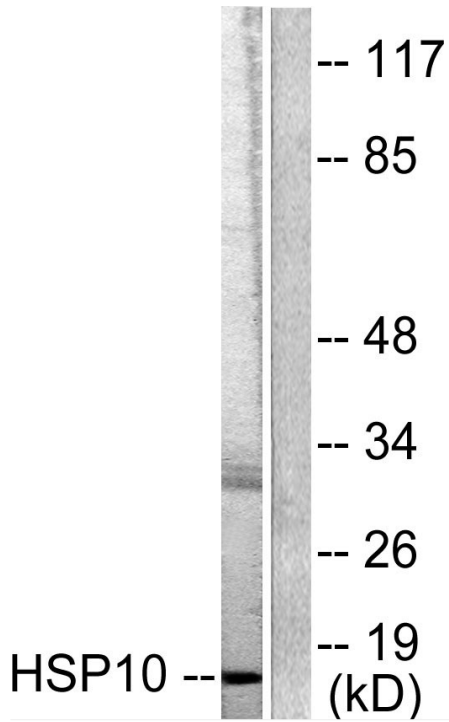
Immunohistochemistry analysis of paraffin-embedded human breast carcinoma tissue, using HSP10 Antibody. The picture on the right is blocked with the synthesized peptide.

Nanjing BYabscience technology Co.,Ltd

网址: [www.njbybio.com](http://www.njbybio.com)

官方热线: 025-5229-8998

监督电话: 15950492658



Western blot analysis of lysates from NIH/3T3 cells, using HSP10 Antibody. The lane on the right is blocked with the synthesized peptide.