



GRB14 Polyclonal Antibody

Catalog No	BYab-03908
Isotype	IgG
Reactivity	Human;Mouse;Rat
Applications	WB;IHC;IF;ELISA
Gene Name	GRB14
Protein Name	Growth factor receptor-bound protein 14
Immunogen	The antiserum was produced against synthesized peptide derived from human GRB14. AA range:81-130
Specificity	GRB14 Polyclonal Antibody detects endogenous levels of GRB14 protein.
Formulation	Liquid in PBS containing 50% glycerol, 0.5% BSA and 0.02% sodium azide.
Source	Polyclonal, Rabbit,IgG
Purification	The antibody was affinity-purified from rabbit antiserum by affinity-chromatography using epitope-specific immunogen.
Dilution	WB: 1/500 - 1/2000. IHC: 1/100 - 1/300. ELISA: 1/40000.. IF 1:50-200
Concentration	1 mg/ml
Purity	≥90%
Storage Stability	-20°C/1 year
Synonyms	GRB14; Growth factor receptor-bound protein 14; GRB14 adapter protein
Observed Band	61kD
Cell Pathway	Cytoplasm . Endosome membrane ; Peripheral membrane protein . Upon insulin stimulation, translocates to the plasma membrane. .
Tissue Specificity	Expressed at high levels in the liver, kidney, pancreas, testis, ovary, heart and skeletal muscle.
Function	function:Interacts with the cytoplasmic domain of the autophosphorylated insulin receptor which is then inhibited. The interaction is mediated by the SH2 domain.,PTM:Phosphorylated on serine residues.,similarity:Belongs to the GRB7/10/14 family.,similarity:Contains 1 PH domain.,similarity:Contains 1 Ras-associating domain.,similarity:Contains 1 SH2 domain.,subunit:Binds to the ankyrin repeat region of TNKS2 via its N-terminus.,tissue specificity:Expressed at high levels in the liver, kidney, pancreas, testis, ovary, heart and skeletal muscle.,
Background	The product of this gene belongs to a small family of adapter proteins that are known to interact with a number of receptor tyrosine kinases and signaling molecules. This gene encodes a growth factor receptor-binding protein that

Nanjing BYabscience technology Co.,Ltd



interacts with insulin receptors and insulin-like growth-factor receptors. This protein likely has an inhibitory effect on receptor tyrosine kinase signaling and, in particular, on insulin receptor signaling. This gene may play a role in signaling pathways that regulate growth and metabolism. Alternative splicing results in multiple transcript variants. [provided by RefSeq, Dec 2014],

matters needing attention

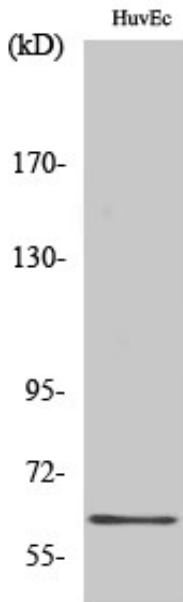
Avoid repeated freezing and thawing!

Usage suggestions

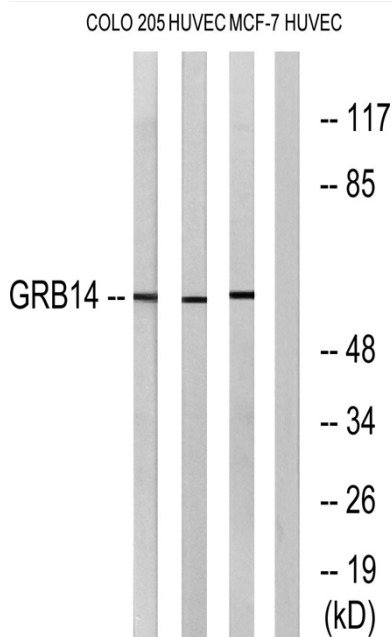
This product can be used in immunological reaction related experiments. For more information, please consult technical personnel.



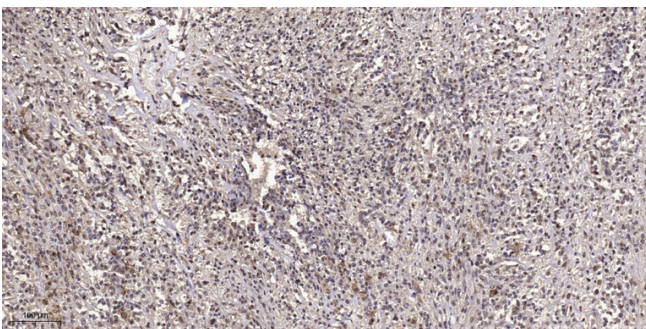
Products Images



Western Blot analysis of various cells using GRB14 Polyclonal Antibody



Western blot analysis of lysates from HUVEC, COLO, and MCF-7 cells, using GRB14 Antibody. The lane on the right is blocked with the synthesized peptide.



Immunohistochemical analysis of paraffin-embedded human small intestinal carcinoma tissue. 1,primary Antibody was diluted at 1:200(4° overnight). 2, Sodium citrate pH 6.0 was used for antigen retrieval(>98° C,20min). 3,Secondary antibody was diluted at 1:200

Nanjing BYabscience technology Co.,Ltd

网址: www.njbybio.com

官方热线: 025-5229-8998

监督电话: 15950492658



Nanjing BYabscience technology Co.,Ltd

网址: www.njbybio.com

官方热线: 025-5229-8998

监督电话: 15950492658